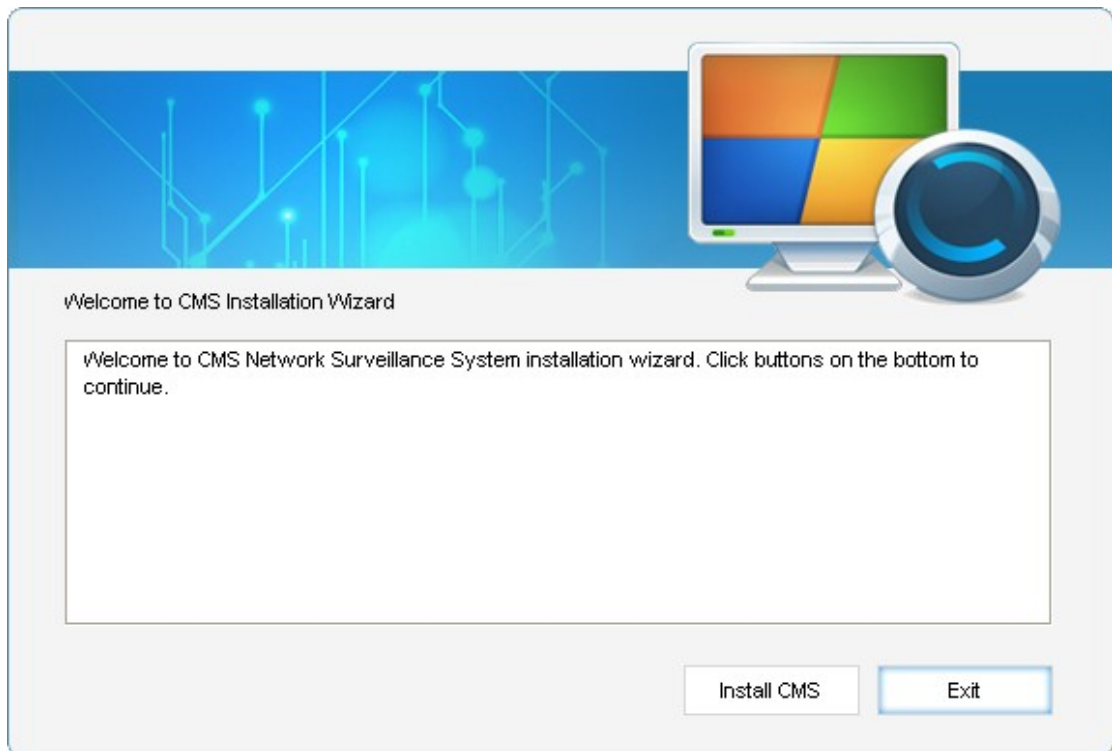


# **CMS User Manual**

# 1. Install CMS

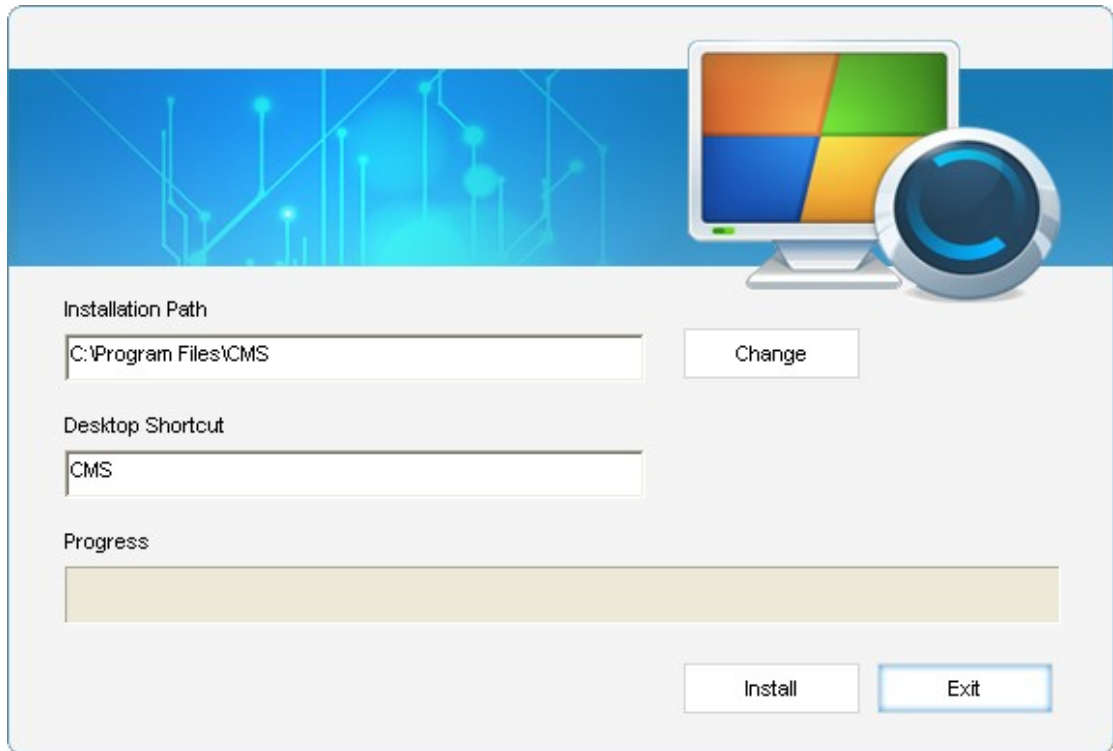
CMS is the branch software which is installed on client PC which can be connected to local PC through network, including internet and LAN. Insert installation CD and double-click the installation icon. Then the installation direction will be displayed as below:



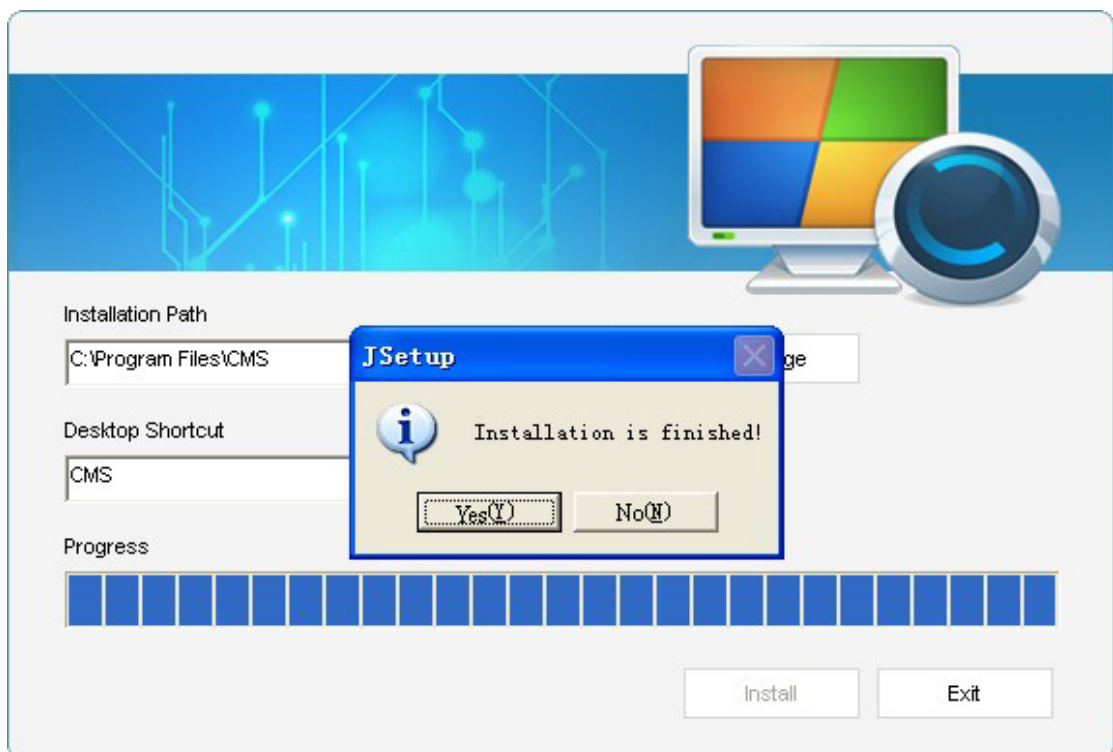
(Figure No. 1)

## 1. Install CMS

Click "Install CMS" in Figure No. 1 and the following dialog box will be displayed.



Select installation path, name desktop shortcut icon and click "Install".




Click "OK" and "Exit" when installation is done.

2. Exit. Exit installation guide.

## 2. Introduction to CMS

CMS is the software installed on PC with Internet to connect host-end. (namely "Client-end").



Double-click desktop icon  to enter the login panel. The login modes include Single ID mode and Multi-ID mode. If user only want to connect one host-end DVR, user can use Single ID Login mode. If user have more than one host-end DVR, user can choose Multi-ID Login mode so that user can use one software interface to connect more than one DVR at the same time.

Input the port No. to connect host-end DVR in Advanced settings, defaultly 9101. In addition, there are three optional rights, such as Floating windows, Detect host in LAN and DVR device management.

Enable Suspend window to let all showing windows float on desktop.

Enable Detect host in LAN when the DVR and CMS are in the same LAN to improve the connecting images effectiveness.

Enable DVR device management to set DVR remotely when the relative DVR has been connected.

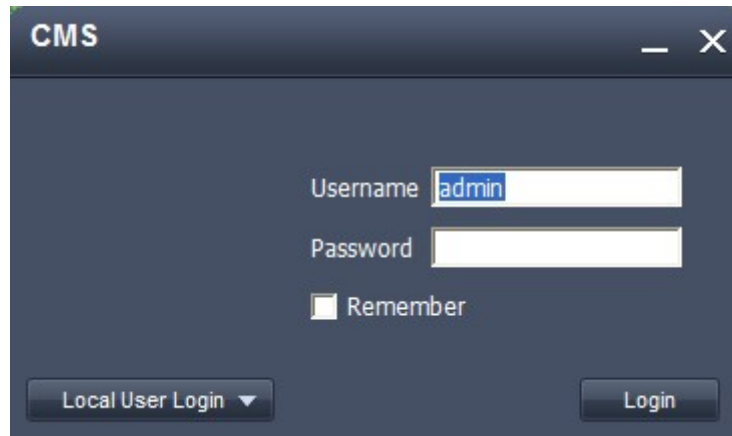
### 1. Device ID Login

Only use Network ID (Cloud Computing ID.) and Network password (the password of Network User "guest") to login.



### 2. Local user Login

Input default username "admin" and password null to login CMS.

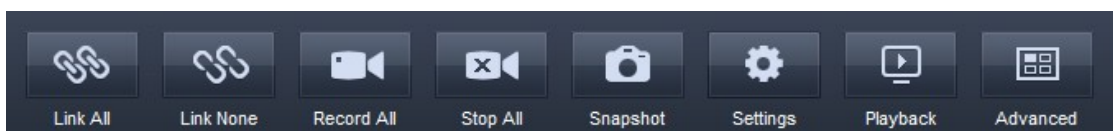


Then you will enter main interface of CMS.



## 2.1. CMS Interface

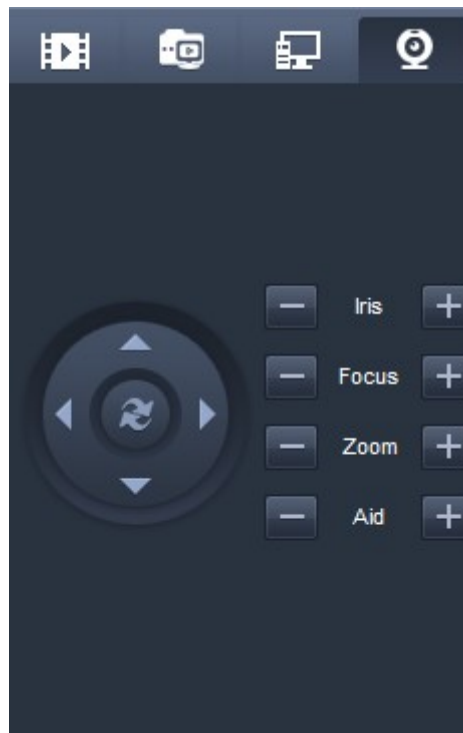
### 2.1.1. System Menu Panel



1. Link All: Click to connect the client to local cameras. (Make sure you have configured network settings )
2. Link None: Disconnect from local cameras.
3. Record All:Click this button and you can record the remote videos and save the recorded videos on client PC.
4. You can search and view the recorded files in Playback System. (Click " Playback " in the above figure for replay.)
5. Snapshot: Click to snapshot remote video. You can view the snapshot images in " Snapshot Manager ".
6. Settings: Details will be introduced in "CMS Settings ".
7. Playback: You can replay recorded videos. For details please refer to "Playback System ".
8. Advanced: Go to "Advanced Settings " for details.

### **2.1.2.PTZ Remote Control Panel**

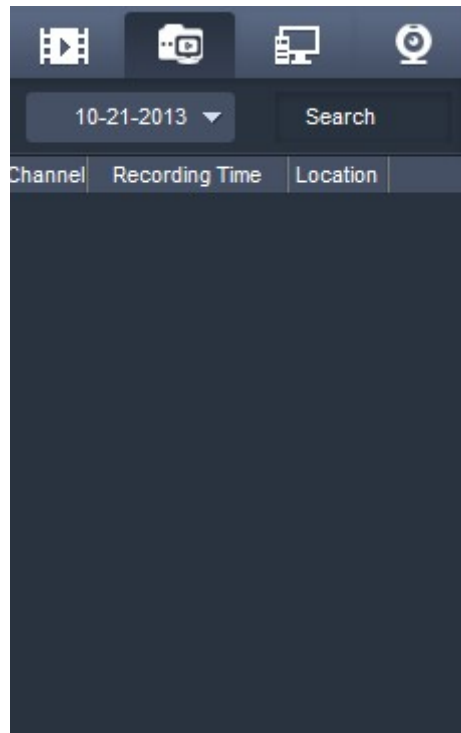
In this panel, you can remote-control speed dome or PTZ cameras at the local end.



### **2.1.3.Remote Playback/Remote Download Panel**

In CMS, you can search recorded files stored on local system and replay these files in CMS.

1. Get access to local video channel and select this channel as the current channel.
2. Click "Search" in the below figure, recorded files of this channel on local PC will be listed.
3. Double click the listed files for playback.
4. Right-click and click "Download" to download recorded files stored on local PC onto your client PC.



## 2.1.4. Master Recording Control

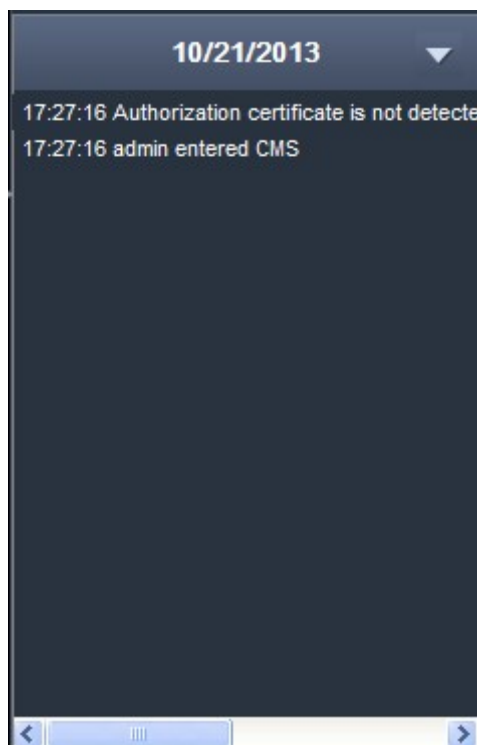
If given the right of master recording control by local users ("Users" >> "Client User Rights" >> " Master Recording Control "), you can also control recording of local PC.

Right-click in CMS view channel, you can "Start Master Recording" or "Stop Master Recording ".

Connect
Disconnect
Output to screen ▶
Start Recording
Stop Recording
Open Audio
Close Audio
Remote Playback Control ▶
Start Master Recording
Stop Master Recording
Remote video settings
Start Talking
Stop Talking
Set Remotely

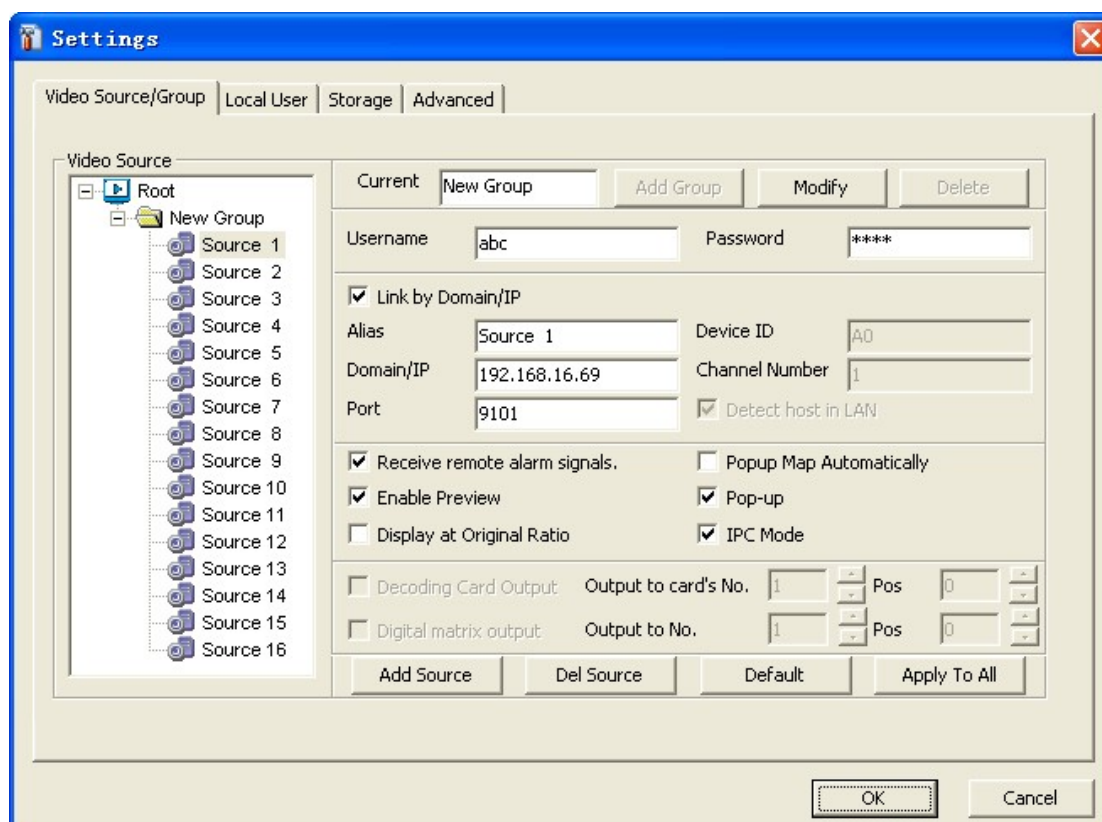
## 2.1.5.Operation Log

Operation records will be displayed in this panel.





## 2.2. CMS Settings >> Video Source/Group



### 1. Group Settings

You can add one group for each local PC. You can also modify or delete the group.

### 2. Video Source

All video sources in a group are listed in the left column. Select one video source and make settings for the source.

### 3. Username and Password

Username and password are the ID by which you can get access to local PC.

### 4. Connection with Domain/IP

For remote access, you can use domain or IP address. This connection method is suitable for access within LAN.

- 1). Check "Link by Domain/IP" to activate domain/IP connection settings.
- 2). Enter domain or IP address of the local PC to access.
- 3). Input the correct Com Port. (By default, the initial communication port is 9100, and following

are 9101,9102,...)

4). Enter Cloud Computing ID CMS main interface, right click on one channel and click "Connect".

5. Connection with Cloud Computing ID.

If you want to get access to a PC DVR system out of your LAN, you can use Cloud Computing ID, which avoids complex settings of port forwarding or DDNS for connection between LANs.

For detailed settings please refer to "Cloud Computing ID Settings in CMS".

6. Receive remote alarm signals

Check this function to enable CMS to receive alarm signal from local system (JDVR).

7. Decoding Card Output

Check "Decoding Card Output" to enable remote video to be displayed on TV monitors or TV matrix.

8. Functional Buttons

Add Source: Add a new video source to a group.

Delete Last: Delete the bottom video source.

Default: Restore to default settings.

Apply To All: Apply current settings to all sources.

Save: Save the configurations to video sources.

## 2.2.1.CMS Settings >> Local User

The screenshot shows a Windows-style dialog box titled "Settings" with a blue title bar and a close button (X) in the top right corner. The dialog has four tabs: "Video Source/Group", "Local User", "Storage", and "Advanced". The "Local User" tab is selected. Inside the dialog, there is a table with two columns: "Username" and "Rights". The first row of the table contains the text "admin" under "Username" and "Administrator" under "Rights". Below the table, there are three input fields: "Username" (empty), "Password" (empty), and "Rights" (a dropdown menu showing "Administrato"). Below these fields are three buttons: "Add", "Delete", and "Modify". At the bottom right of the dialog are two buttons: "OK" and "Cancel".

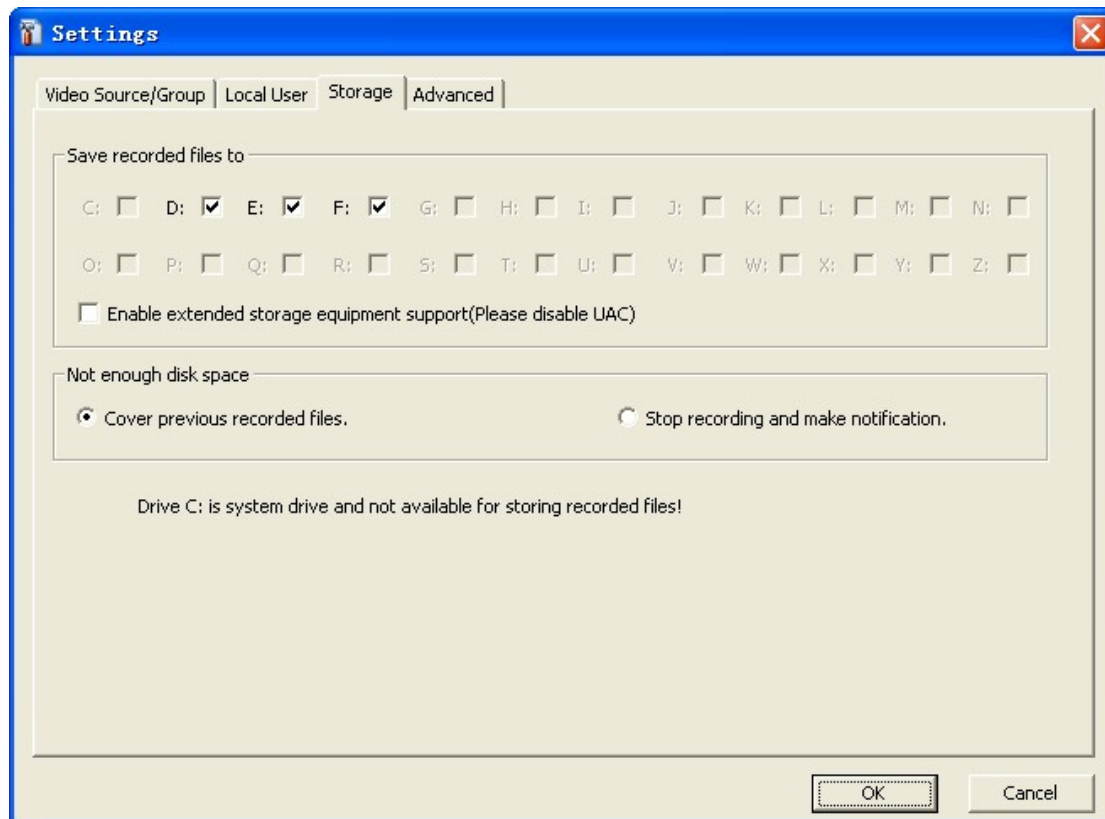
Username	Rights
admin	Administrator

Username:  Password:  Rights:

In this tab, you can configure client user rights.

You can also add new users, modify and delete users.

## 2.2.2.CMS Settings >> Storage



1. Save recorded files to

You can select hard drive to store recorded files.

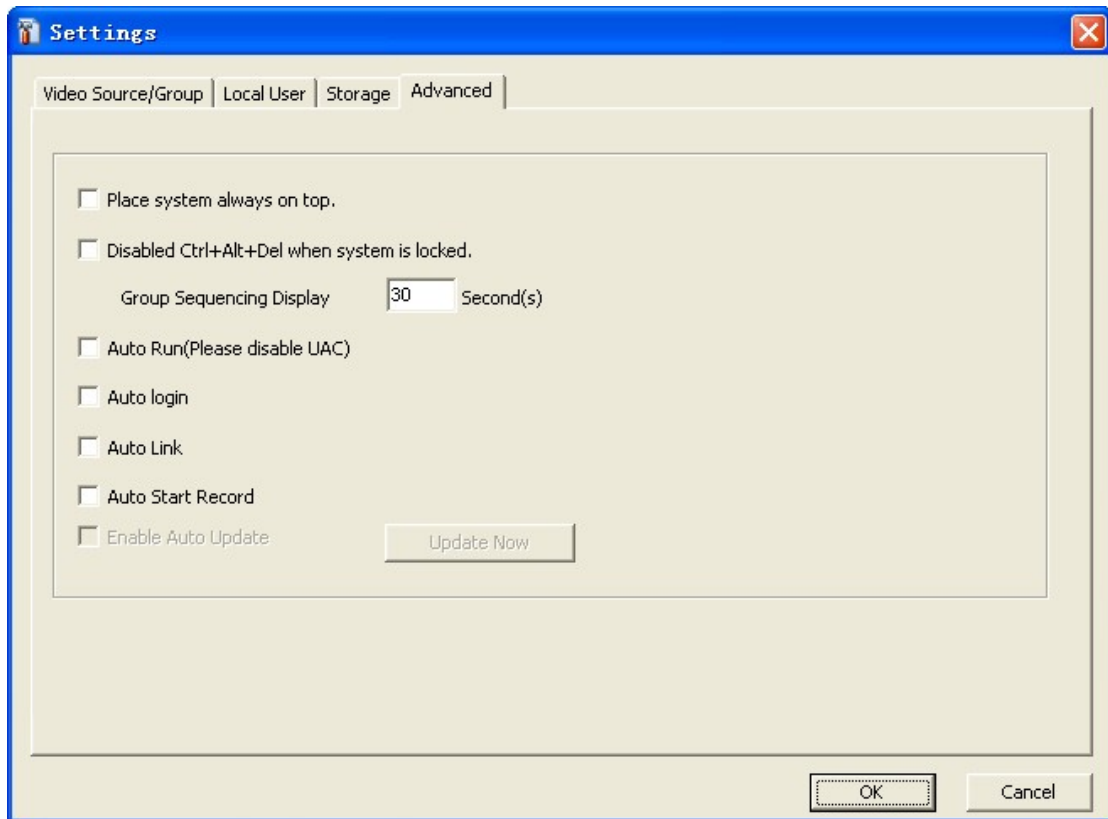
2. In case of HDD space shortage

If HDD is short of space, you have two options:

- 1). Cover previous recorded files.
- 2). Stop recording and make notification.

Note: System drive is not available for storage!

## 2.2.3.CMS Settings >> Advanced



1. Place system always on top

Check this option to make CMS always on top.

2. Disable Ctrl+Alt+Del when system is locked

Disable these hot keys to protect system from illegal operations.

3. RGB Preview

This preview mode can get better remote connection over network.

4. Sequencing Display Interval

Window display can be viewed in turn. You can set sequencing display interval by second.

<p><b>Advanced Settings</b></p>	<p><b>Switch User</b> : Switch to user with different rights.</p> <p><b>Close All Audios</b> : Close audio function of all channels.</p> <p><b>Lock System</b> : Lock CMS system.</p> <p><b>Unlock System</b> : Unlock CMS system.</p> <p><b>Group Sequencing Display</b>: Sequencing display channels group by group.</p>
---------------------------------	--

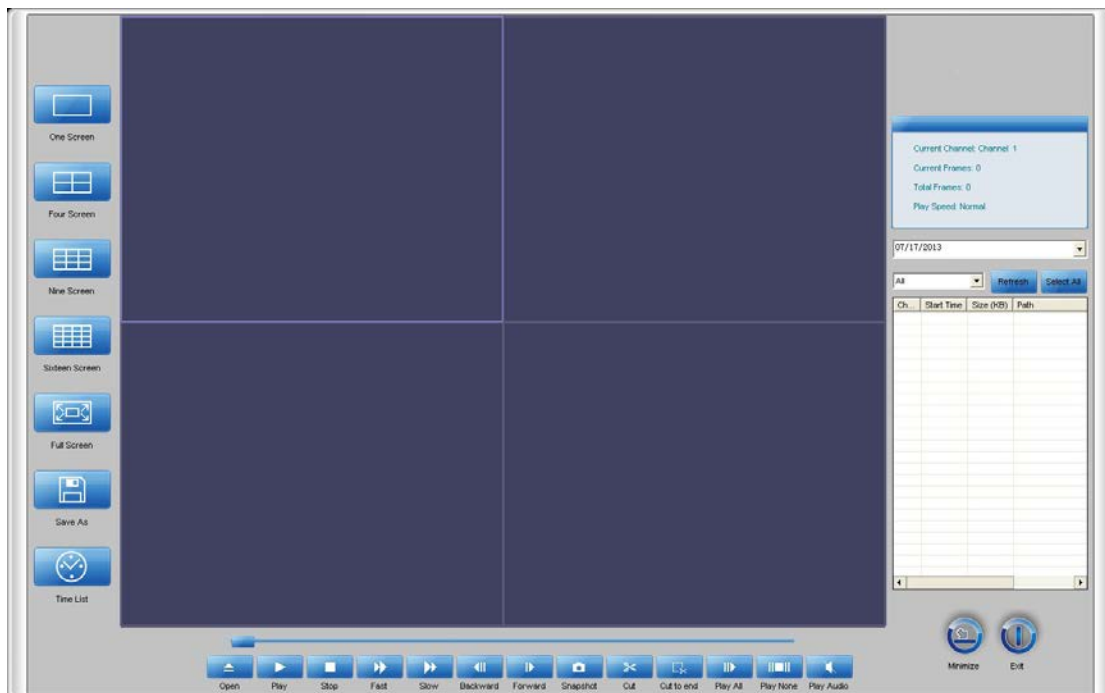
<p>Switch User</p> <hr/> <p>Lock System Unlock System Group Sequencing Display</p> <hr/> <p>Emap Snapshot Manager Stop Sound Card Alarm</p> <hr/> <p>Import Configurations Export Configurations Save sources to group</p> <hr/> <p>About CMS</p>	<p><b>Operation Log</b> : Operation records and software information.</p> <p><b>Snapshot Manager</b>: Manage, retrieve and view snapshot images.</p> <p><b>Stop Sound Card Alarm</b>: Stop sound card alarm upon different conditions.</p> <p><b>Clear Operation Log</b>: Clear operation logs without deleting them.</p> <p><b>Screen Splits</b>: Five view layouts are available: 1 channel view, 4 channel view, 9 channel view, 16 channel view and 25 channel view</p> <p><b>About CMS</b>: Software version and copyright information.</p>
---	--

### 3. Playback System

Both JDVR/CMS have built-in access to Playback System, which can manage, retrieve and playback recorded files locally and remotely.

Click button "Playback" in JDVR and CMS, playback system will be opened.

Playback system with special compression algorithm is applied exclusively to JDVR and CMS, you can also download Media Player plugins from our website to playback the recorded files.



## 3.1. Playback Functions



Playback control buttons:

Open: Open recorded files.

Play/Pause: Click "Play" to start playback of recorded videos, then click "Pause" to pause.

Stop

Fast: Fast Play

Slow: Slow Play

Backward: display the video backward by seconds

Forward: display the video frame by frame

Snapshot: Capture images from displaying video, the captured images can be checked in "Snapshot Manager".

Cut: When the recorded file is being replayed, you can cut the video. Click "Cut" at the expected point and click "Cut" again to stop cutting, and Save As dialog will be displayed automatically.

Play All: Select videos and playback them all simultaneously.

Play None: Stop playback all videos.

Play: Play audio of recorded videos.

## 3.2. Playback Status

On the right side of the CMS main interface, you can get system status information. They are as follows:

Video Playback Information



Current Channel: Current window in playback.

Current Frames: Number of the frames in display for each packed files.

Total Frames: Recorded files are packed every 30 minutes, so the total frame refers to the size of the packed files. The value is constant. At a speed of 25fps, the total frame is  $30 \times 60 \times 25 = 45000$ .

Play Speed: The lowest speed is 10 percent of the normal speed and the highest is 8 times the normal speed.

### 3.3. Recorded File Searching Panel

Recorded video files can be searched via two modes: File List and Time List.

#### 3.3.1. File List Mode

This mode is shown as the following figure.

Select date, channel and click "Refresh", and the expected recorded files will be listed in the list.

Then double click the list file(s) for playback.

You can also select a file in the list and click "Save As" to save this file to your expected path.



07/16/2013
▼

All

Ch...	Start Time	Size (KB)	Path
01	19:36:48	30276	F:\dvrFile\201307
02	19:36:48	29967	F:\dvrFile\201307
03	19:36:48	30279	F:\dvrFile\201307
04	19:36:48	15334	F:\dvrFile\201307

### 3.3.2. Time List Mode

Time List Mode is shown as figures below:

(In File List Mode, click "Time List" button to switch to Time List Mode, vice versa)



Play All	00	01	02	03	04	05	06	07	08	09	10	11	12	13	14	15	16	17	18	19	20	21	22	23
Channel 1																								
Channel 2																								
Channel 3																								
Channel 4																								
Channel 5																								

Double click on the blue area to playback recorded files.