

Network Camera PC Client User Manual

CATALOG

<i>THE FIRST CHAPTER INTRODUCTION.....</i>	<i>3</i>
<i>THE SECOND CHAPTER INSTALLATION GUIDE.....</i>	<i>4</i>
<i>SOFTWARE INSTALLATION.....</i>	<i>4</i>
1.1 <i>OPERATING SYSTEM CONFIGURATION REQUIREMENTS.....</i>	<i>4</i>
1.2 <i>SOFTWARE INSTALLATION.....</i>	<i>5</i>
2. <i>UNINSTALL THE SOFTWARE AND REPAIR.....</i>	<i>8.</i>
2.1 <i>CHAPTER THIRD SOFTWARE FOR USE.....</i>	<i>10</i>
1. <i>CLIENT MAIN INTERFACE.....</i>	<i>10</i>
2. <i>THE MAIN INTERFACE FUNCTIO.....</i>	<i>13</i>
2.1 <i>THE TOOLBAR.....</i>	<i>13</i>
2.2 <i>FILE VIEW INTERFACE.....</i>	<i>15</i>
2.3 <i>VIDEO INTERFACE STATUS BAR.....</i>	<i>16</i>
2.4 <i>SD CARD REMOTE VIDEO PLAYBACK.....</i>	<i>17</i>
2.5.1 <i>EQUIPMENT INFORMATION.....</i>	<i>18</i>
2.5.2 <i>THE TIME AND DATE.....</i>	<i>19</i>
2.5.3 <i>THE NETWORK PARAMETERS.....</i>	<i>20</i>
2.5.4 <i>USER MANAGEMENT.....</i>	<i>20</i>
2.5.5 <i>MAIL SETTINGS</i>	<i>21</i>
2.5.6 <i>FTP SETTINGS.....</i>	<i>23</i>
2.5.7 <i>DDNS SETTINGS.....</i>	<i>24</i>
2.5.8 <i>PTZ SETTINGS.....</i>	<i>25</i>
2.5.9 <i>ALARM SETTINGS</i>	<i>26</i>
2.5.10 <i>WIFI SETTINGS.....</i>	<i>26</i>

The first chapter introduction.

The client software is used to realize centralized monitoring of front-end network video surveillance equipment, storage and control. The software supports 1/4/9/16/25/36/49/64 images of single screen display and full screen, OSD name display settings, two-way voice intercom, a local video, SD card remote video playback, P2P remote viewing, picture capture and other functions.

Friendly interface, simple operation, convenient user implementation of equipment at the same time to a plurality of remote network monitoring.

Its main function is to:

- * THE REAL-TIME MONITORING VIDEO IMAGE
- * SUPPORT TWO-WAY VOICE INTERCOM
- * SUPPORT TILT IN ALL DIRECTIONS AND CAMERA CONTROL, CAN REALIZE IMAGE FLIP AND MIRROR IMAGE
- * SUPPORT MANUAL LOCAL VIDEO AND PICTURE CAPTURE
- * SUPPORT FOR DDNS (DDNS) PROTOCOL
- * P2P REMOTE VIEWING
- * SD CARD REMOTE VIDEO PLAYBACK

The second chapter installation guide

1 software installation

1.1 operating system configuration requirements

- * Operating system: Windows 7/XP English
- * CPU: P4 more than 2.0G (recommended)
- * Memory: 256M above
- * Graphics: to support more than DirectX8.1 graphics card,

32M memory

* Sound card: the essential need to voice monitoring and two-way intercom when

* Hard disk: need to record the image, should not be less than 40G

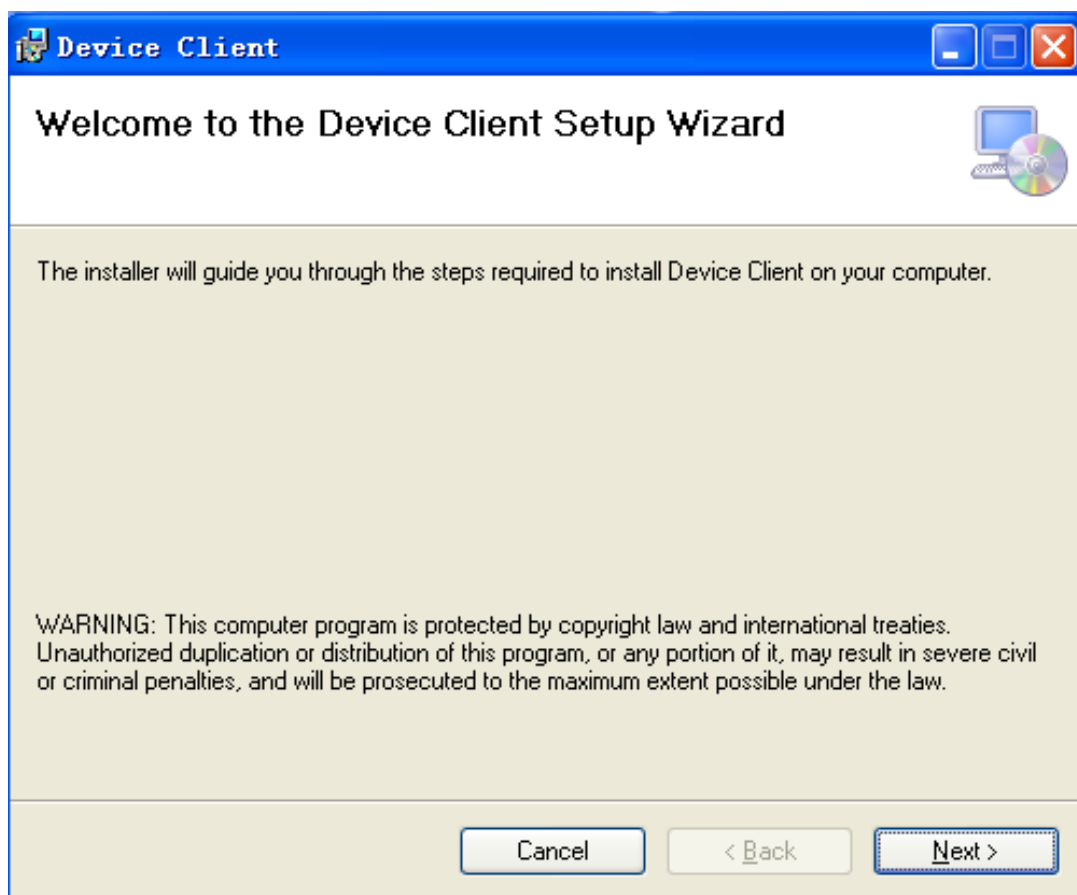
1.2 software installation

Click on the install program DeviceClient.msi

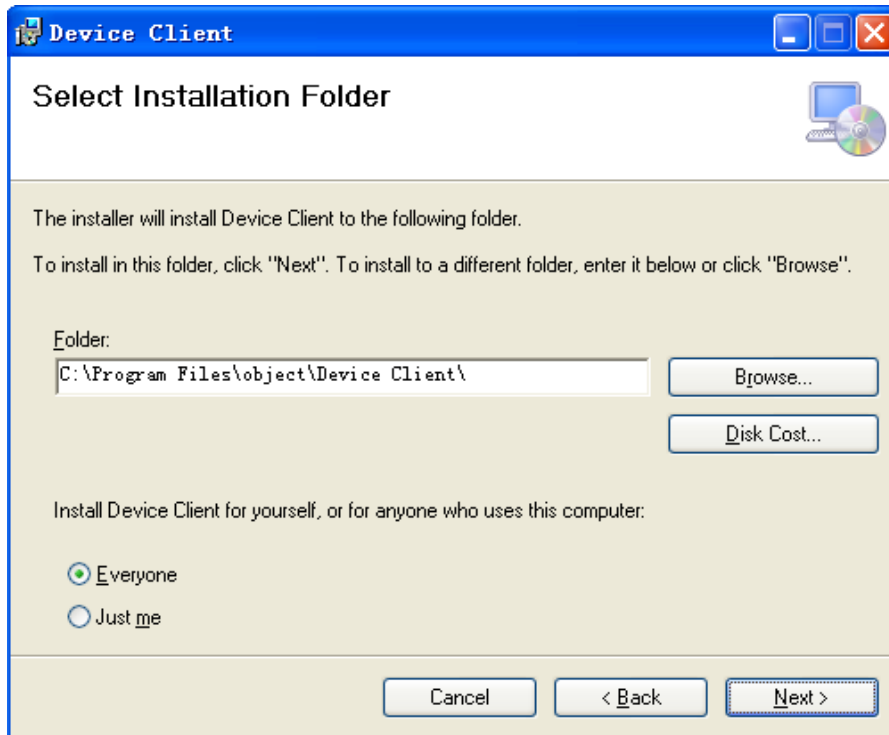


Pop up

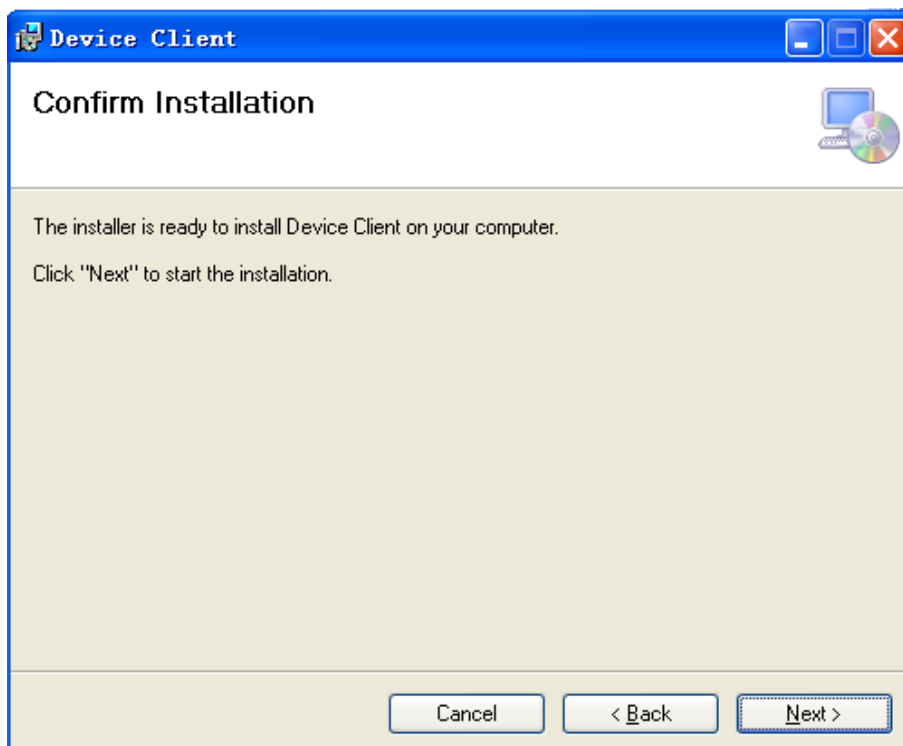
the following window



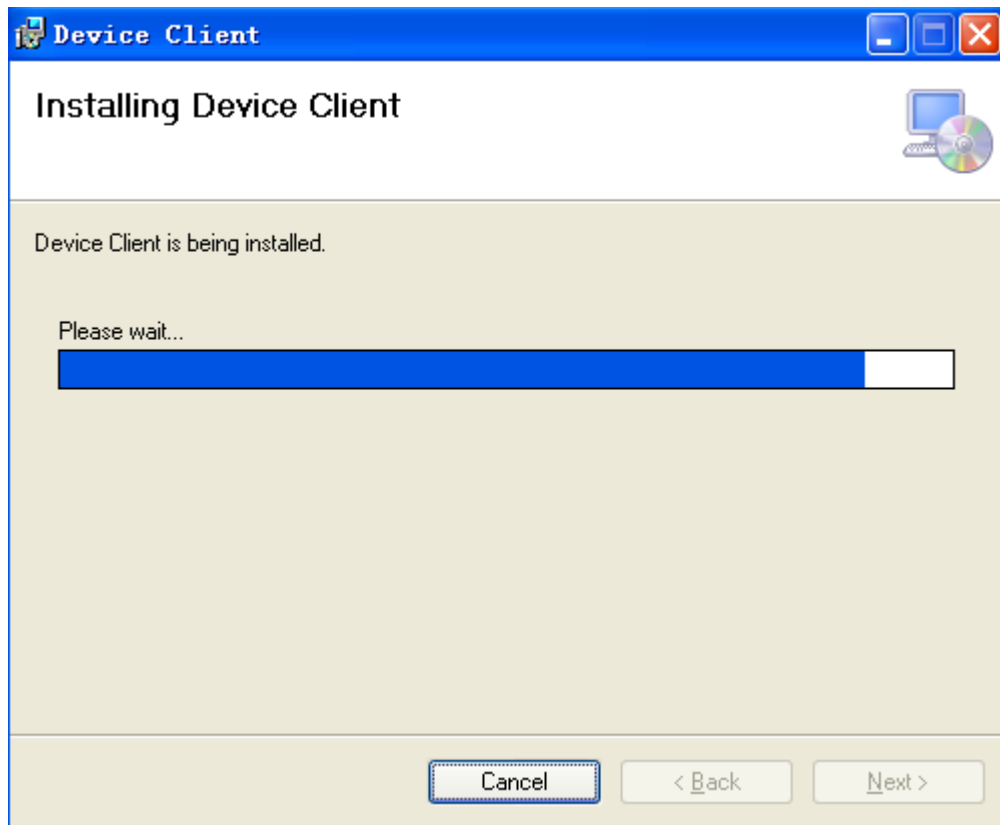
Click Next to pop up the following window:



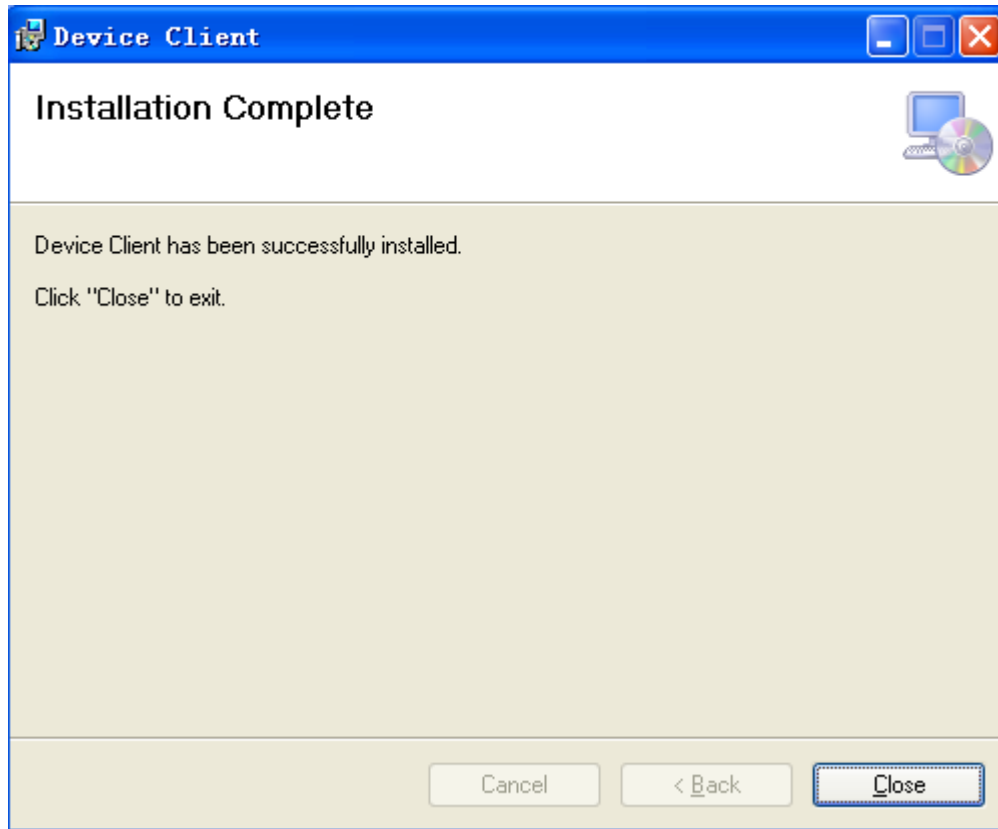
Click Browse to change the installation path, if not change the installation path, direct click Next can appear in the following window:



Click Next to begin the installation following the installation process



Click close to finish the software installation



Uninstall the software and repair

To ensure that the client software has retired from running in the background and repair the client before unloading

Click on the install program `DeviceClient.msi`



Can

also go directly to the PC control panel to uninstall

Chapter third software for use

1. client main interface

Run the client program



Log directly into the main interface

First time users using the client, in order to open the monitor screen, need to be device P2P number or IP address / name added to the client, the operation steps are as follows:

- 1 Click on the main interface equipment list
- 2 Open the search interface
- 3 The search to double-click the device:

The device name fill in, the default user name: admin, password for admin, ID cam: report of the bottom of the device stickers. Click OK to equipment added successfully

Secondly, the user can also choose to manually add equipment P2P account, click Add

- 1 Enter any character in the device name
- 2 Enter the default user name: admin Password: admin
- 3 Enter the ID cam: report of the bottom of the device stickers
- 4 Click OK to add equipment success

Select any equipment list equipment, drag it to any window to display

At this point, the client has the right connection device, and to see to the monitor screen

2. The main interface function

2.1 The toolbar

System: the system configuration video and capture image storage path

The equipment list: open the device search list

Exit: exit the client software

Picture: switching between single picture, multi screen and full screen

Sidebar: show and hide the sidebar, that is the main interface to the left of the document view interface

The alarms window: show and hide the alarms window

Help: check the client version information

2.2 File view interface



: Control platform for each direction key



: Start up and down and left and right patrol



: Video image mirror and the upper and lower vertical flip



: Display device name and time information



: Opening and closing device IO output

The configuration of the system: system configuration video and capture image storage path

The equipment list: open the device search list



: Display is added to the client within the equipment

2.3 Video interface status bar

Moving the mouse to the preview interface appears as follows:



: Click to open the voice monitoring




: The realization of PC client and terminal equipment two-way voice intercom function to open at the same time



: Click to open a local video function



: Click image to realize the capture function, click once to capture a picture

: Click to close the current video, need to open it you need to from the device list drag equipment to the specified screen

2.4 Click to view the video store path system

The selected file double-click to open the video can be played

2.5 Equipment parameter setting

In the device list select the need to modify the parameters of the equipment, equipment connection opened in preview video state double-click the selected device to enter parameter setting interface

2.5.1 Equipment information

In the device information interface click access to equipment to obtain information, such as the next:

Equipment system firmware version: the machine system software version number

Name: name of the display device settings (customers can set)

Equipment serial number: refers to the series of factory

The state of alarm: alarm status display device

The DDNS state: equipment DDNS state, if there is a set DDNS, and normal suggest DDNS service provider of information

MAC: display equipment of wired MAC address

WIFI MAC: display equipment of wireless MAC address

2.5.2 The time and date

The time and date interface click access can be obtained to date and time information equipment, Acquisition time from PC or the acquisition time from the server, if do not have access to the Internet only from the PC acquisition, set (set) Click key on it, you can put the device in good time calibration.

2. 5. 3 The network parameters

The network parameters can be obtained to interface click access equipment network parameter information

Check to obtain IP address automatically click settings from the DHCP server to obtain the dynamic IP equipment

2. 5. 4 User management

In the user management interface click access can be obtained to user equipment information management, equipment the default factory settings have an administrator permissions to users

The product can be set up to three user: administrator, visitor and operator

Administrator: having all permissions settings, can be so operation

Visitor: can only browse the video and image switching

Operator: in addition to cannot enter the equipment parameter interface, other rights are

2. 5. 5 Mail Settings

In the e-mail settings interface click access to equipment can be obtained the mail setup information, such as the next
The main function is to email alarm function, if the camera to trigger an alarm, to set a good email alarm message to send:

Sender: the sender email address complete

Recipient: Fill in the receiving alarm message mailbox address

The SMTP server : Fill in the email sender email websites such as QQ mailbox: smtp.qq.com;

SMTP users: Fill in the sender email user name

SMTP password: Fill in the sender e-mail password

The camera is connected to the Internet before this function, if the sender email password changed, to keep the password and email password consistent function to normal use

2.5.6 FTP settings

In the setting of FTP interface click access to equipment to obtain FTP setting information, such as the next:

The main function is to specify the camera to upload pictures to the FTP server directory If there is no access to the Internet, can not use normal setting

The FTP server: Fill in the URL of the site to upload

The FTP port: The default is 21

FTP users: Fill in the FTP user name

FTP password: Fill in the FTP user password

Upload time interval timing: how often to capture images automatically upload to FTP, in seconds

2.5.7 DDNS settings

In the setting of DDNS interface click access to equipment to obtain DDNS setting information, such as the next:

The DDNS service: Fill in the application domain

DDNS users: Fill in the application domain

DDNS password: Fill in the domain password

The DDNS state: Display connection domain status

Note: for free DNS server operating instructions please refer to the description of the site or contact your service provider's customer service department.

Dynamic domain name service if enabled, must do port mapping corresponding in your router HTTP port number that equipment through routing mapping out the concrete operation check special about port mapping file

2. 5. 8 **PTZ settings**

In the setting of PTZ interface click access to equipment to obtain PTZ setting information, such as the next:

Prohibit the preset position: when enabled, preset function failure

Alignment of the preset position starts: 1 a 16 preset positions available, the corresponding preset start equipment is aligned to the set position; banned after the device is started by default Center

PTZ: speed speed adjust platform

Cruise laps: set the start up and down or left and right patrol cruise circle number

2. 5. 9 **Alarm set**

In the alarm click settings interface can access to get equipment alarm setting information

Select the alarm mode, a IO port linkage, or e-mail, is to upload pictures, linkage preset alarm can choose; for example: mobile detection all-weather protection, setting the detection sensitivity was 10; alarm linkage IO outputs high level, send mail, FTP image upload (separated by 10 seconds to upload a photo) and alarm linkage alignment preset

2. 5. 10 **WIFI settings**

In the setting of WIFI interface click access to equipment to obtain the WIFI setting information

The use of wireless LAN tick, click on the search button, to search the surrounding wireless network, select a wireless network to connect to a wireless router, automatic configuration consistent; there is a need to verify the router must enter the correct password validation

Thank you for using the network camera, because of the difference between each model or system software upgrade resulting in appearance or function is different from the manual, please feel free to contact the manufacturer. For these changes I'm sorry we can not inform you.
