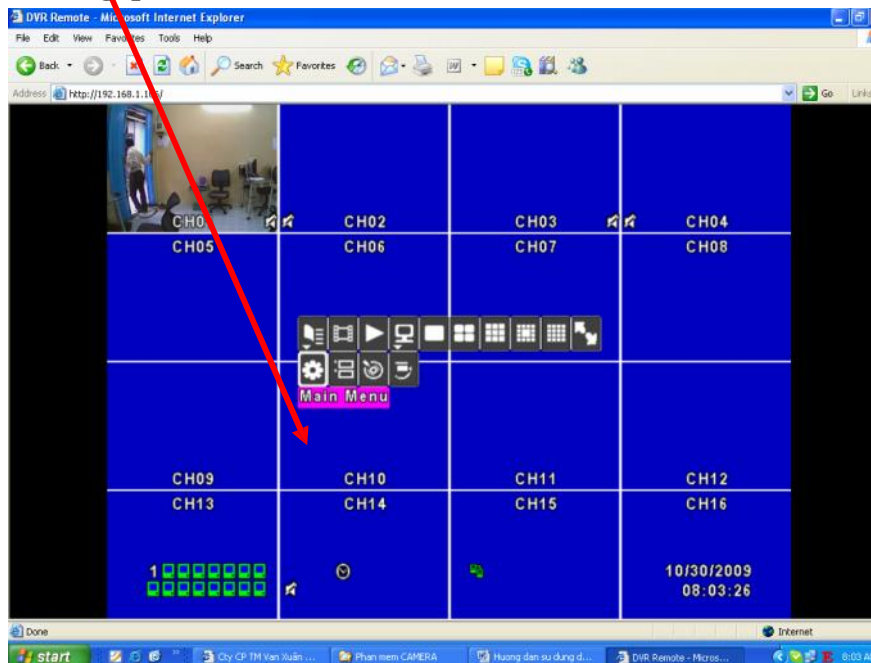


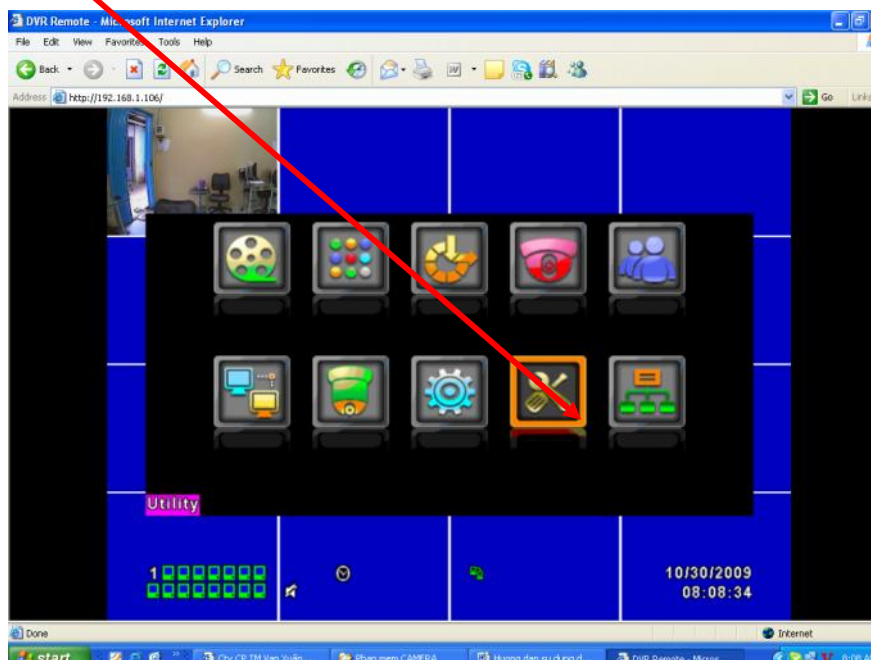


**H NG D NS D NG U GHI H264 NEW COMPRESSION
DVR 4100 - 8100 - 16100 (4CH - 8CH - 16CH)**

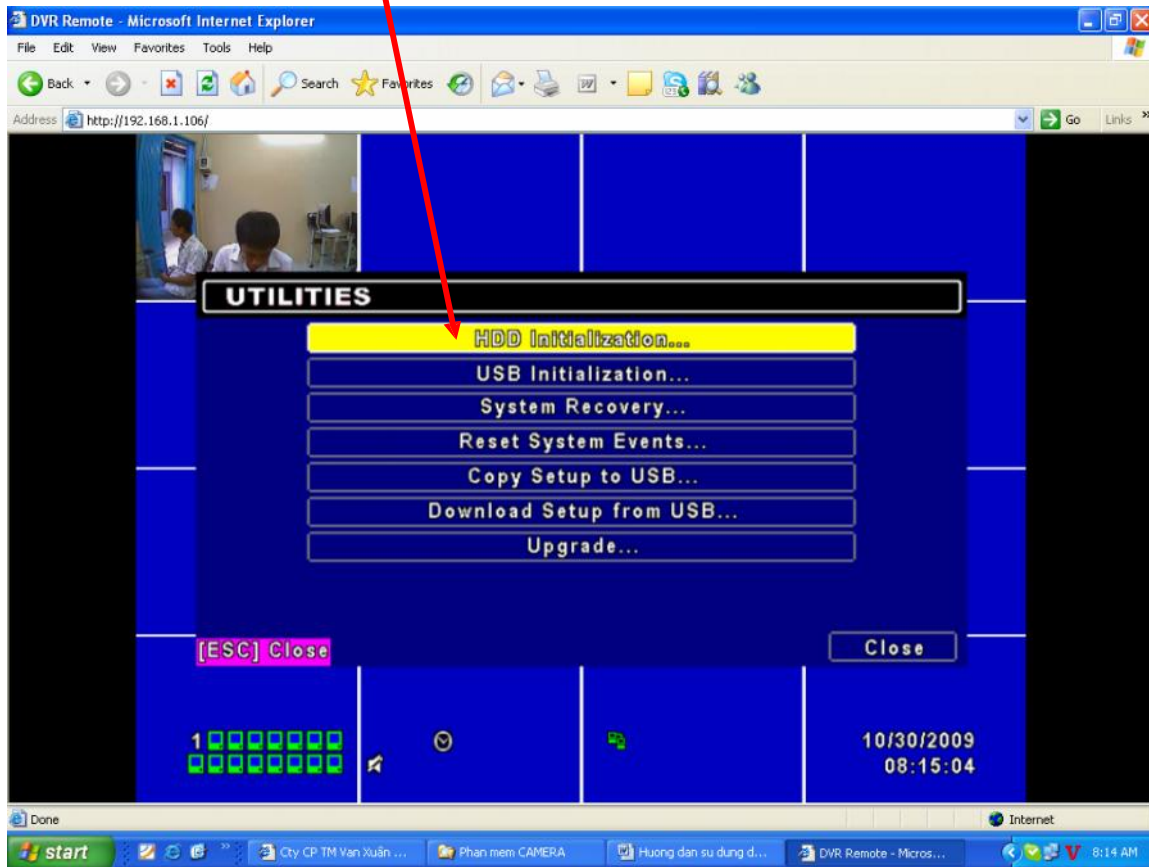
Xin vui lòng c k h ng d n tr c khi s d ng:
+ Format c ng, ph i chu t nh n Main Menu



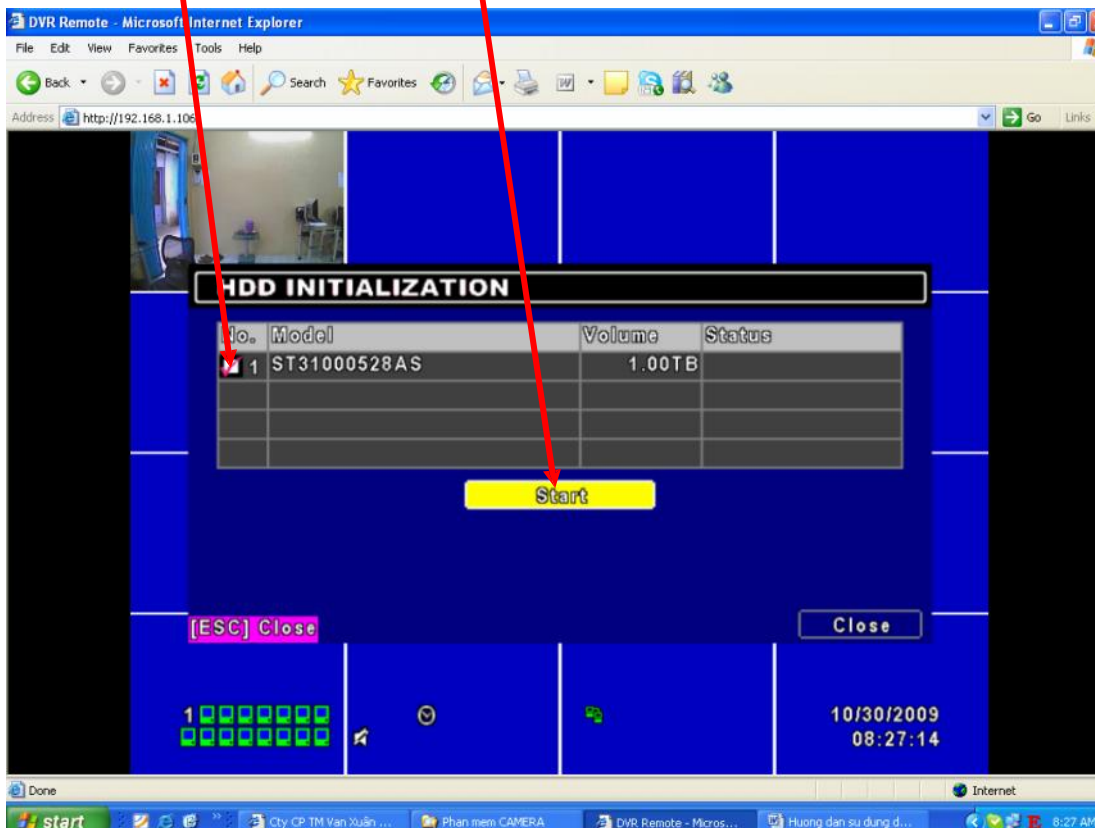
+ Nh n Utility



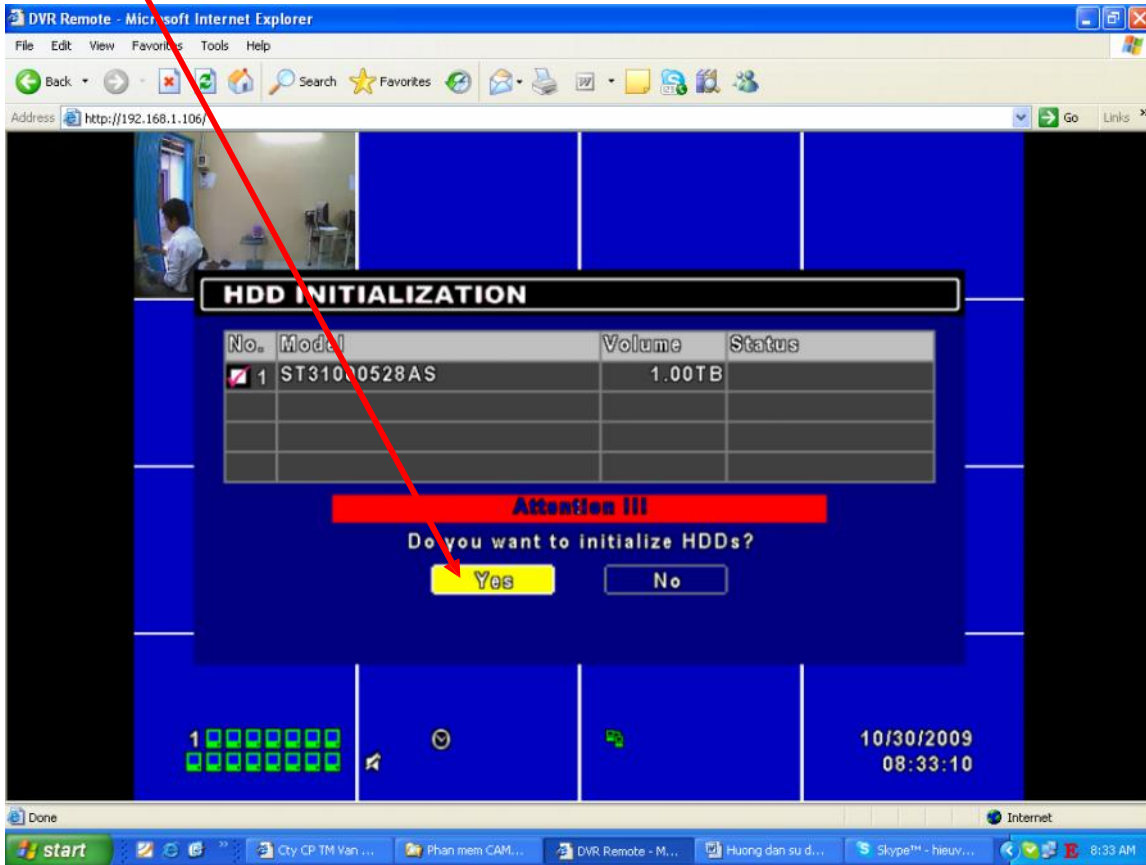
+ Nhấn nút HDD Initialization...



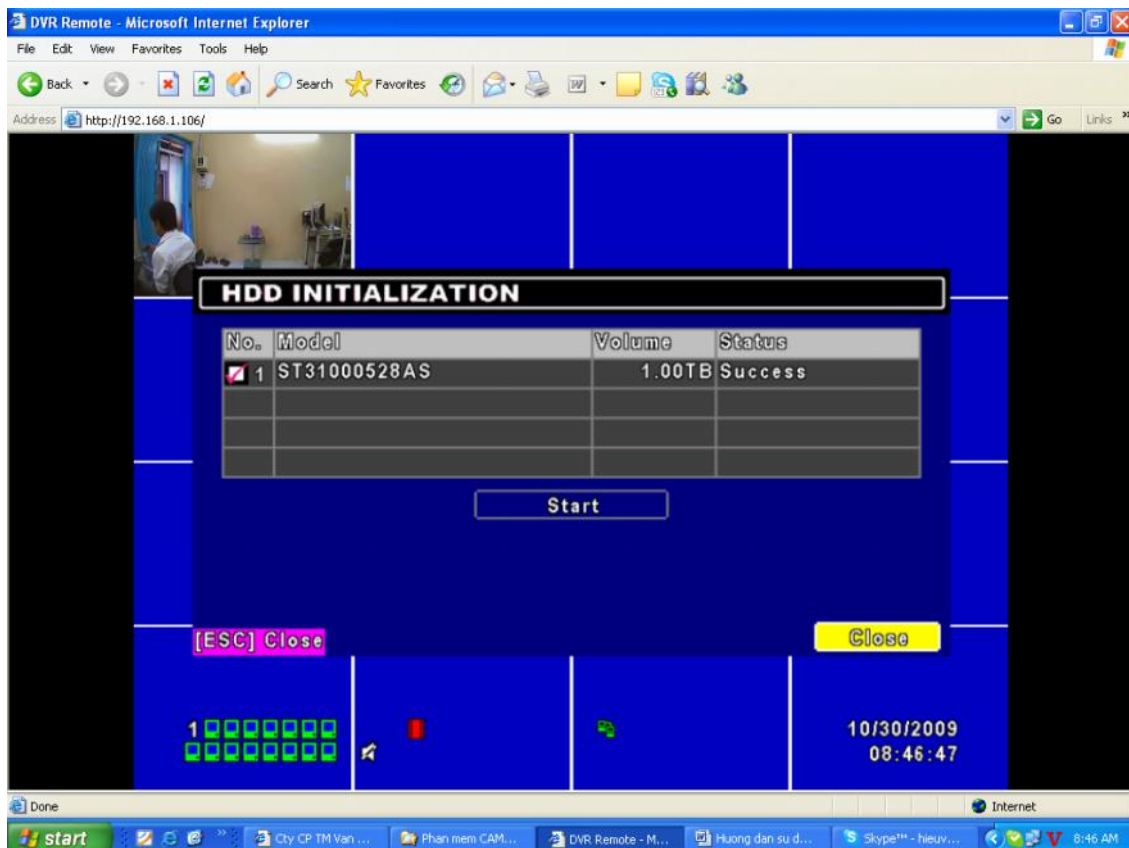
+ ấn đ u check vào ô s 1 và nh n Start



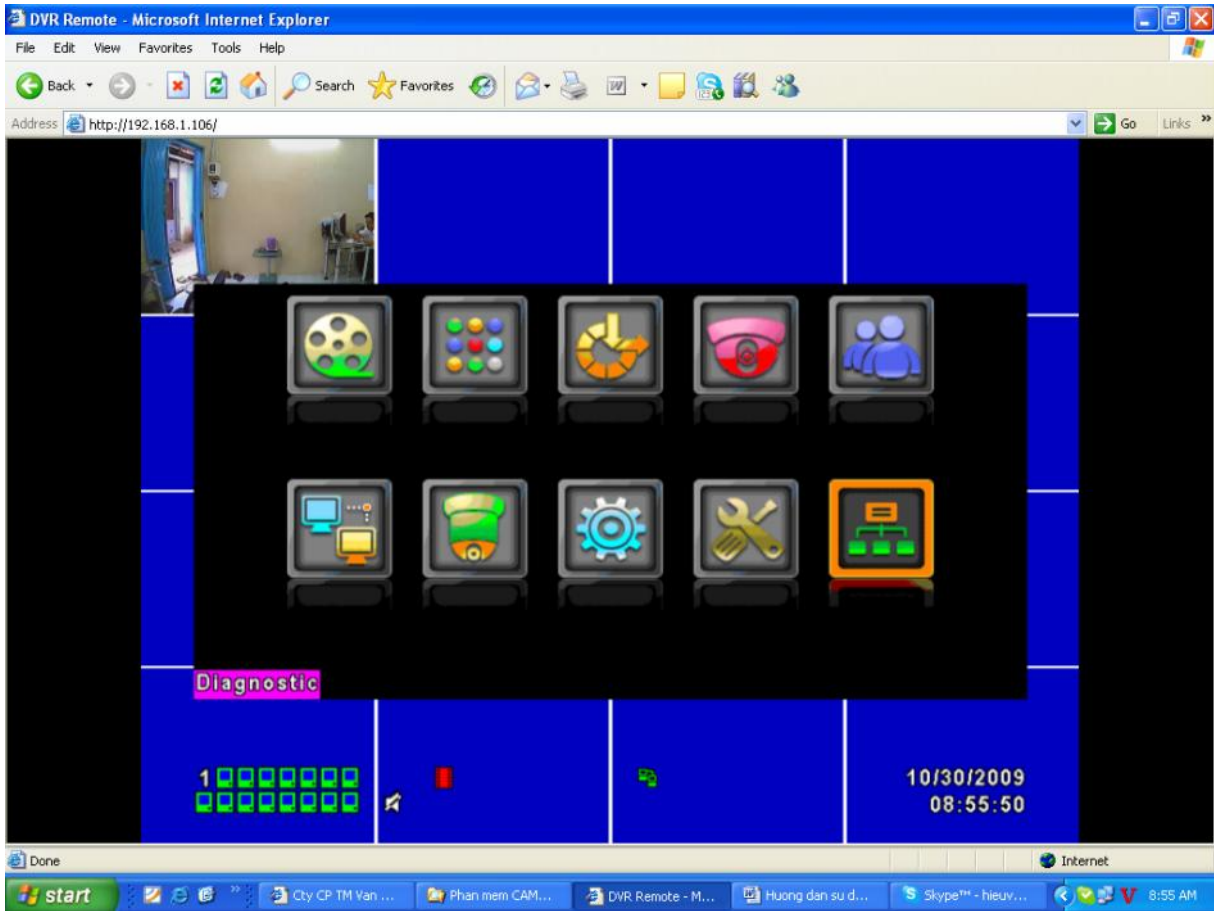
+ Nhấn Yes



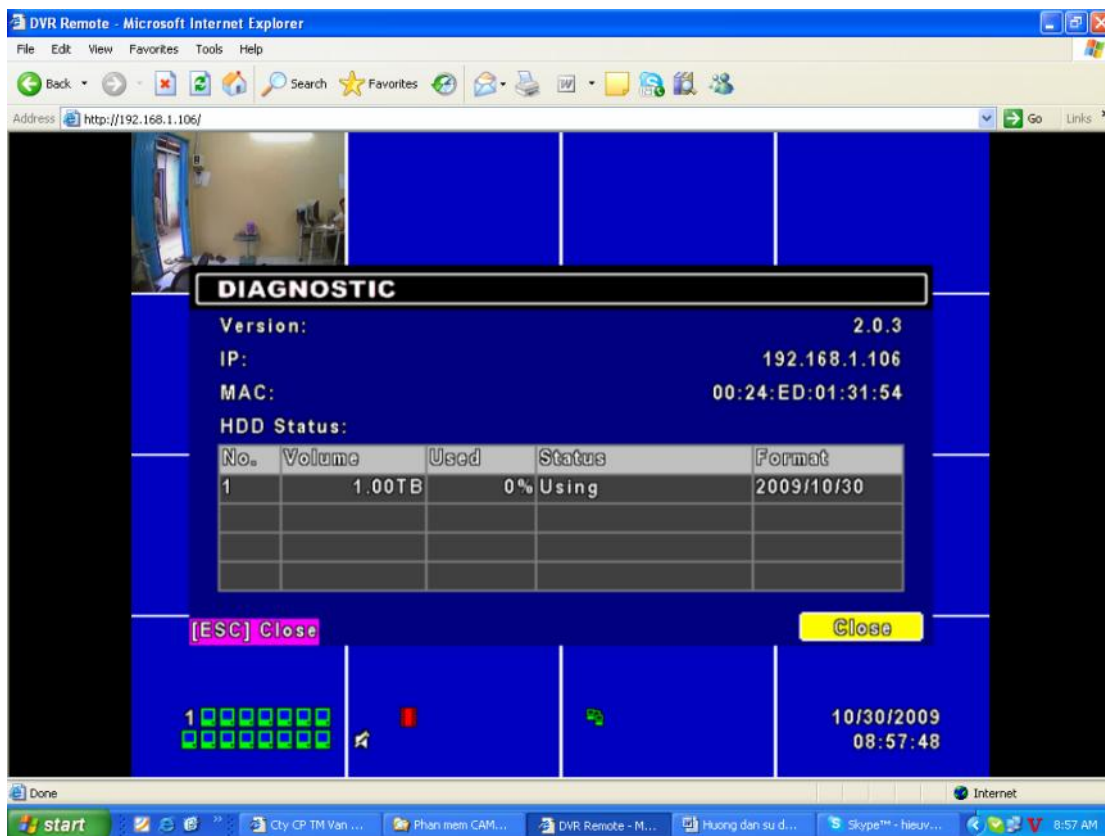
+ Nhấn Close



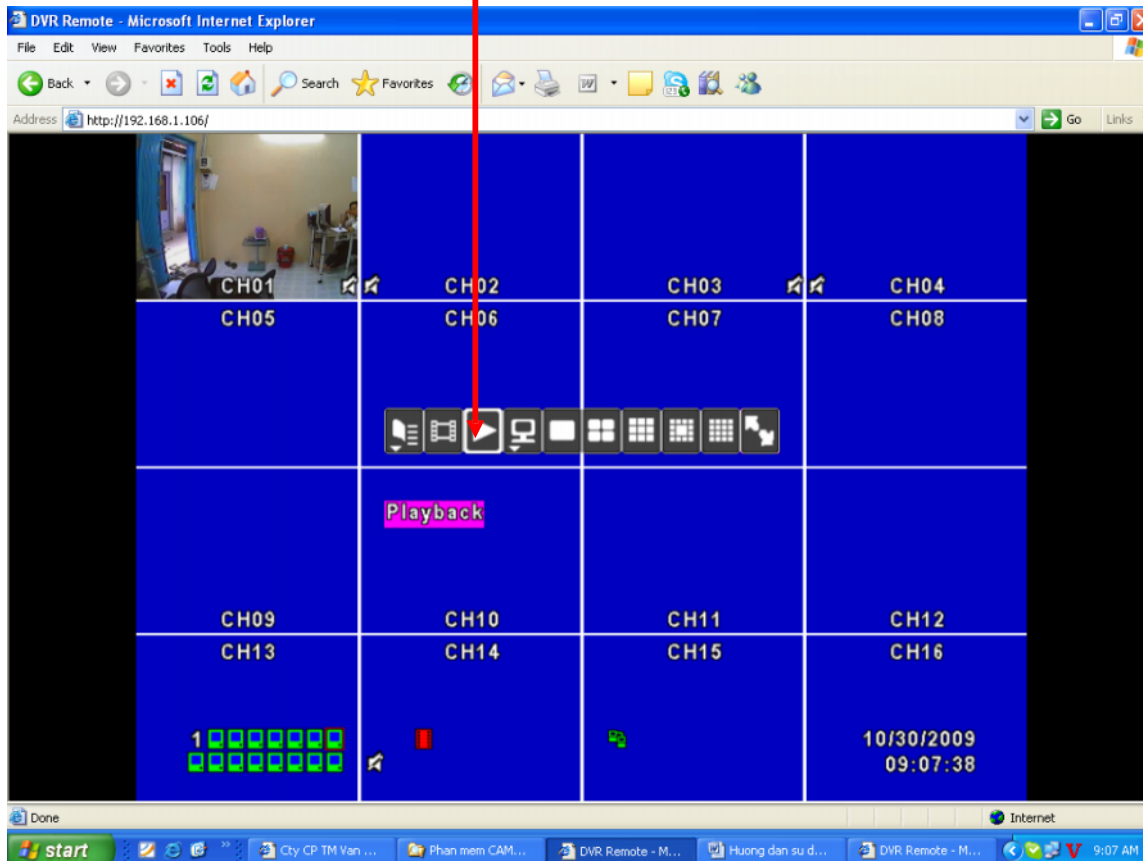
+ Nh n Diagnostic



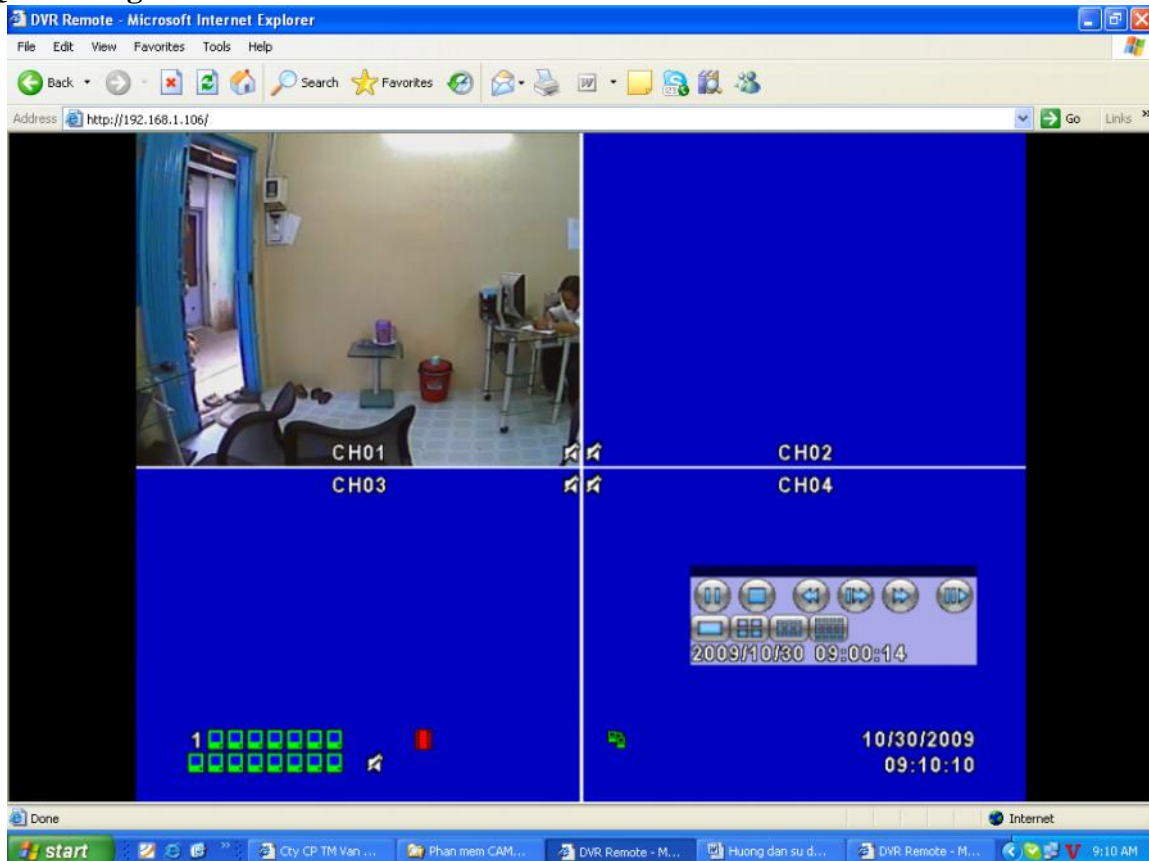
+ Nh n Close



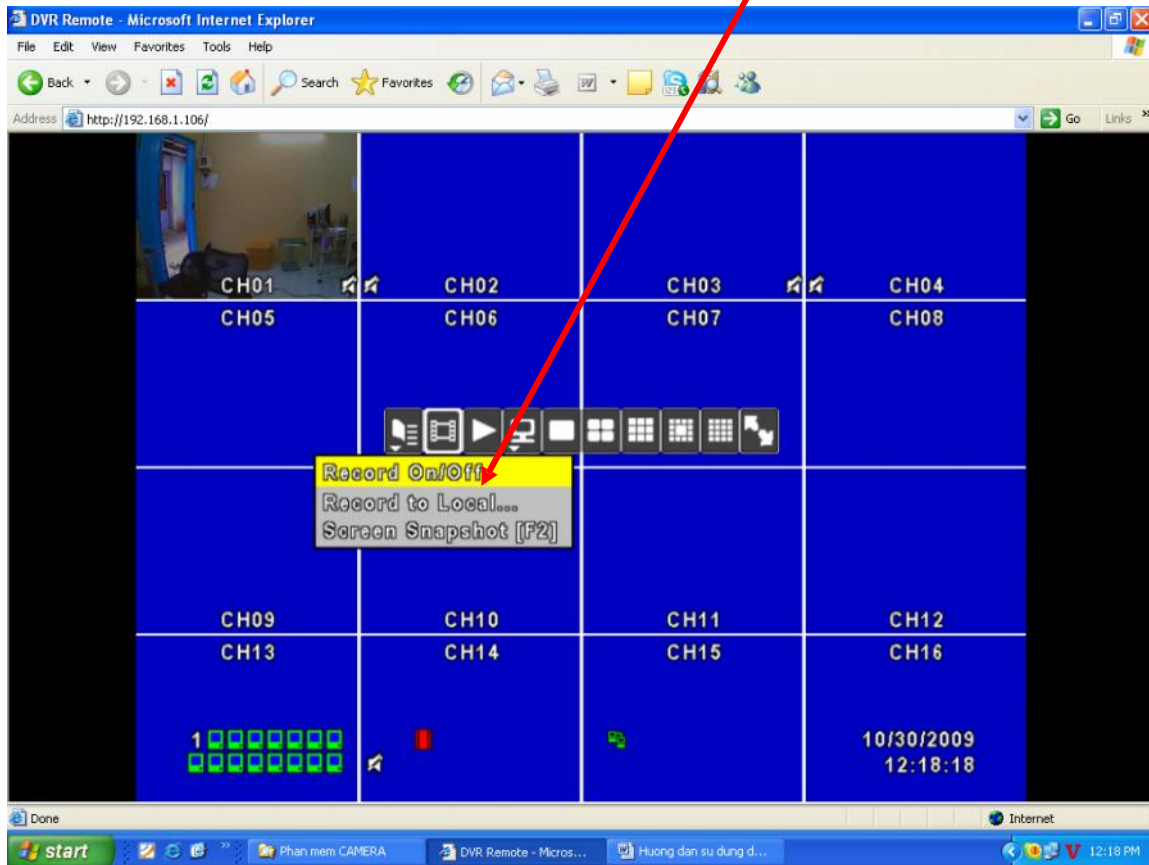
+ Xem l i ph n ghi hình, Nh n Playback



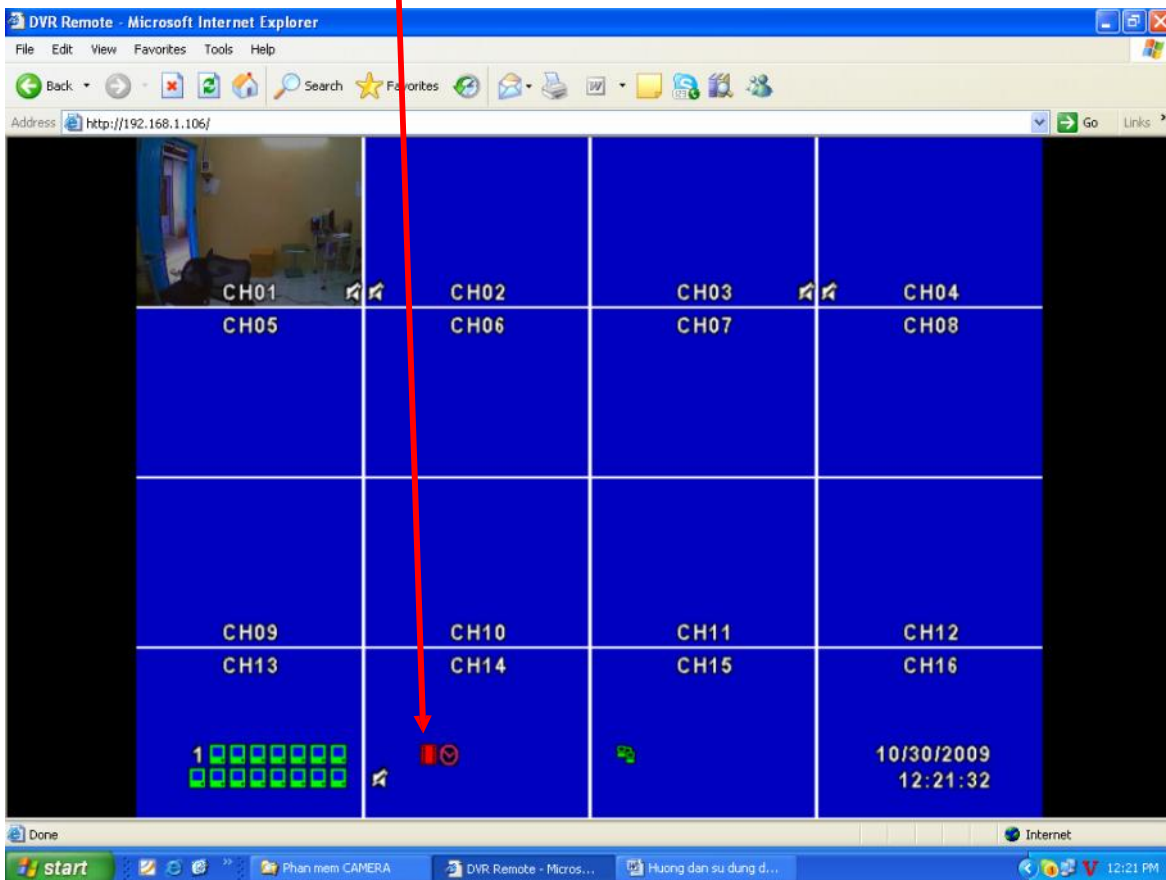
+ Quá trình ghi l i



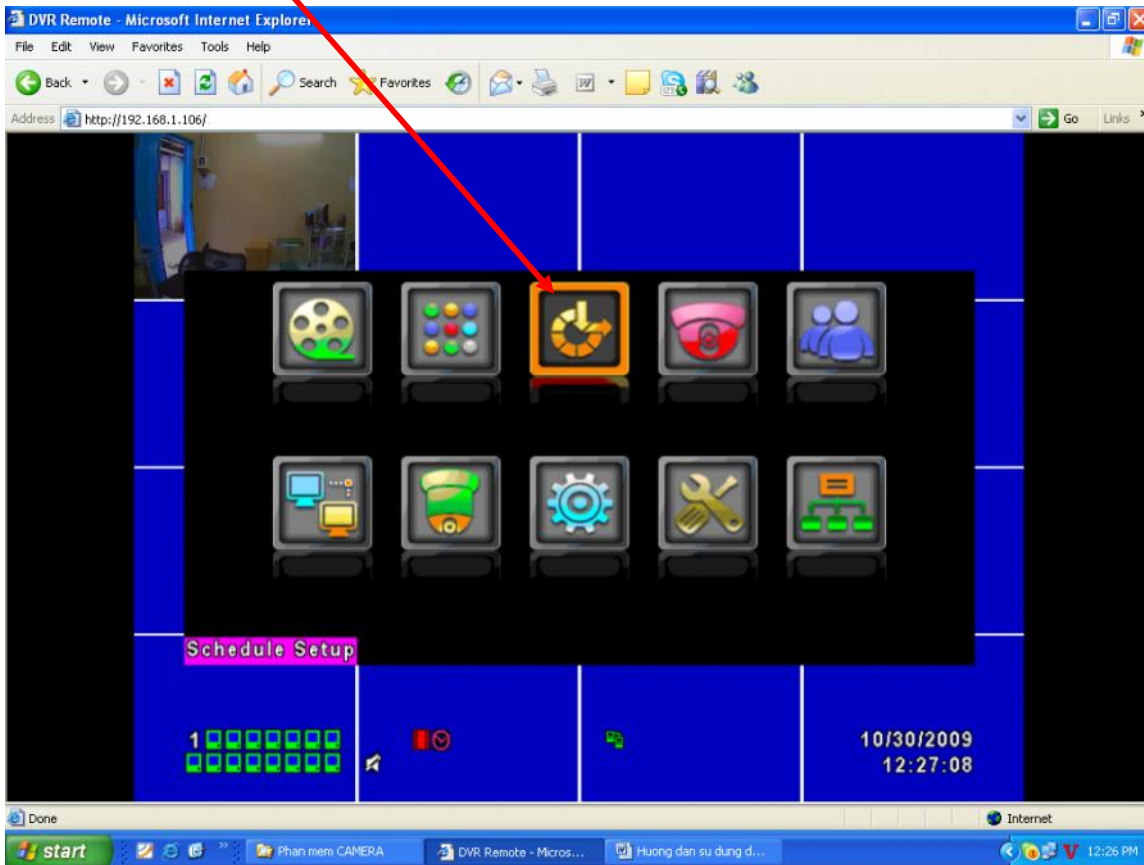
+ C u hình ghi theo l ch trình, ph i chu t ch n Record On/Off



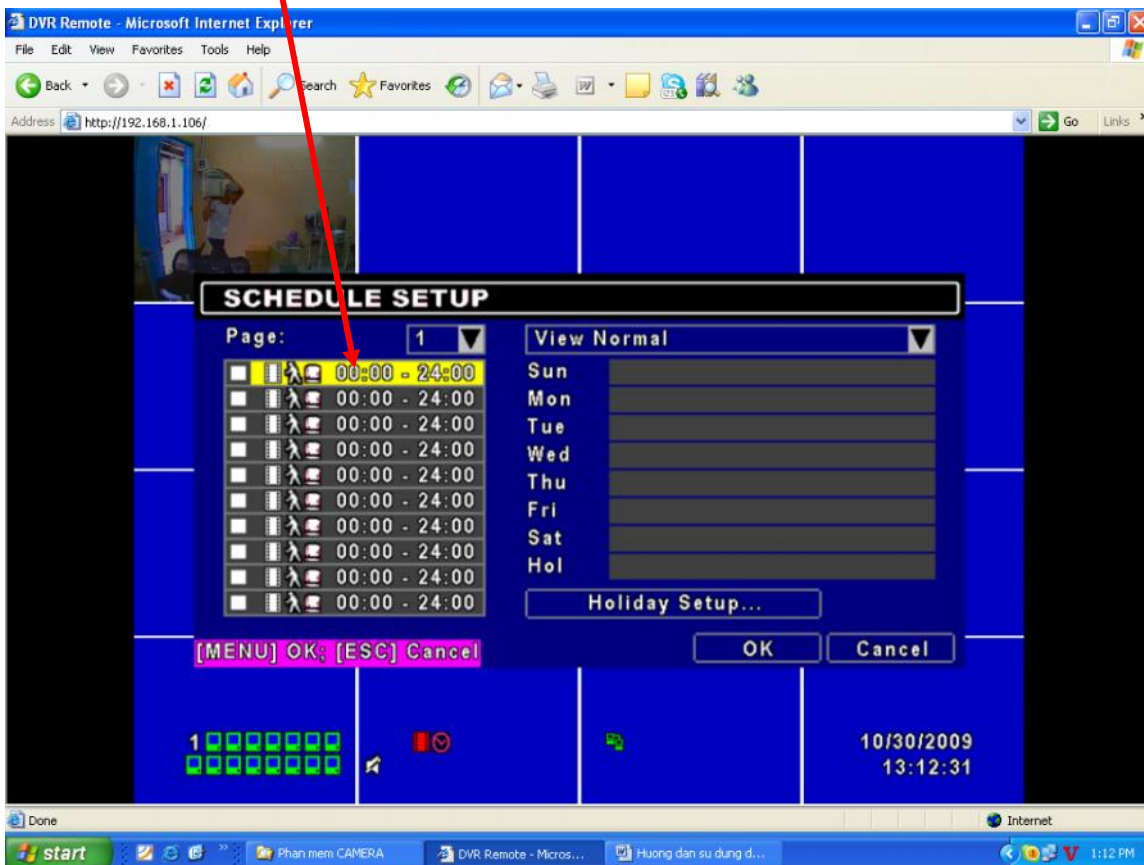
+ Bi u t ng ngh xu th i n



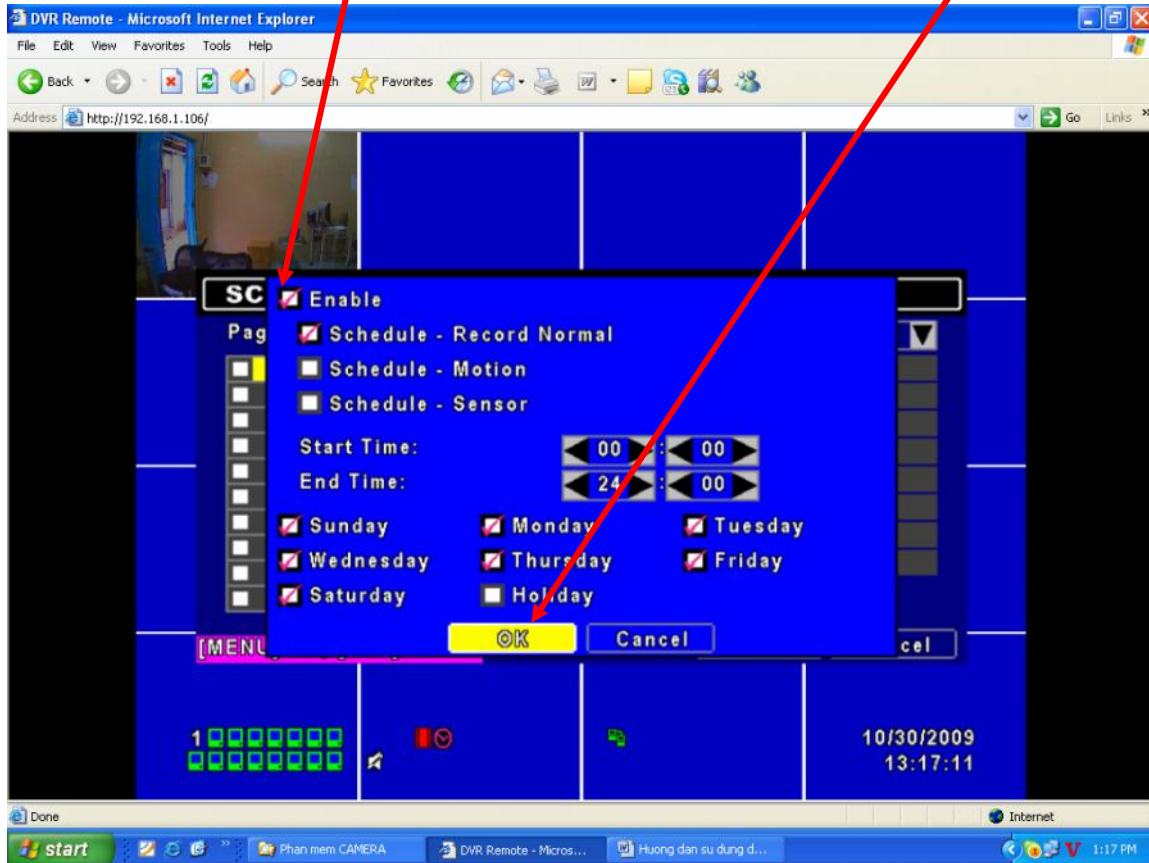
+ Chọn Schedule Setup



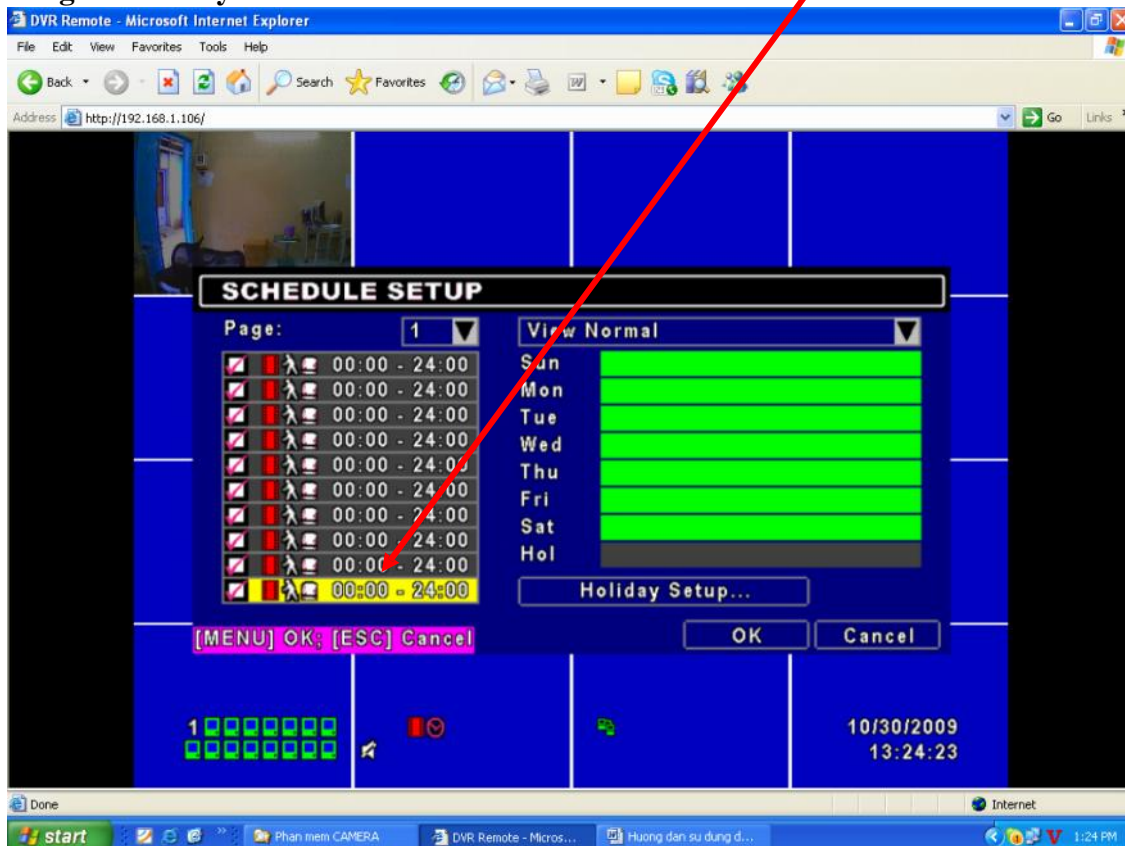
+ Kích ch n theo m c



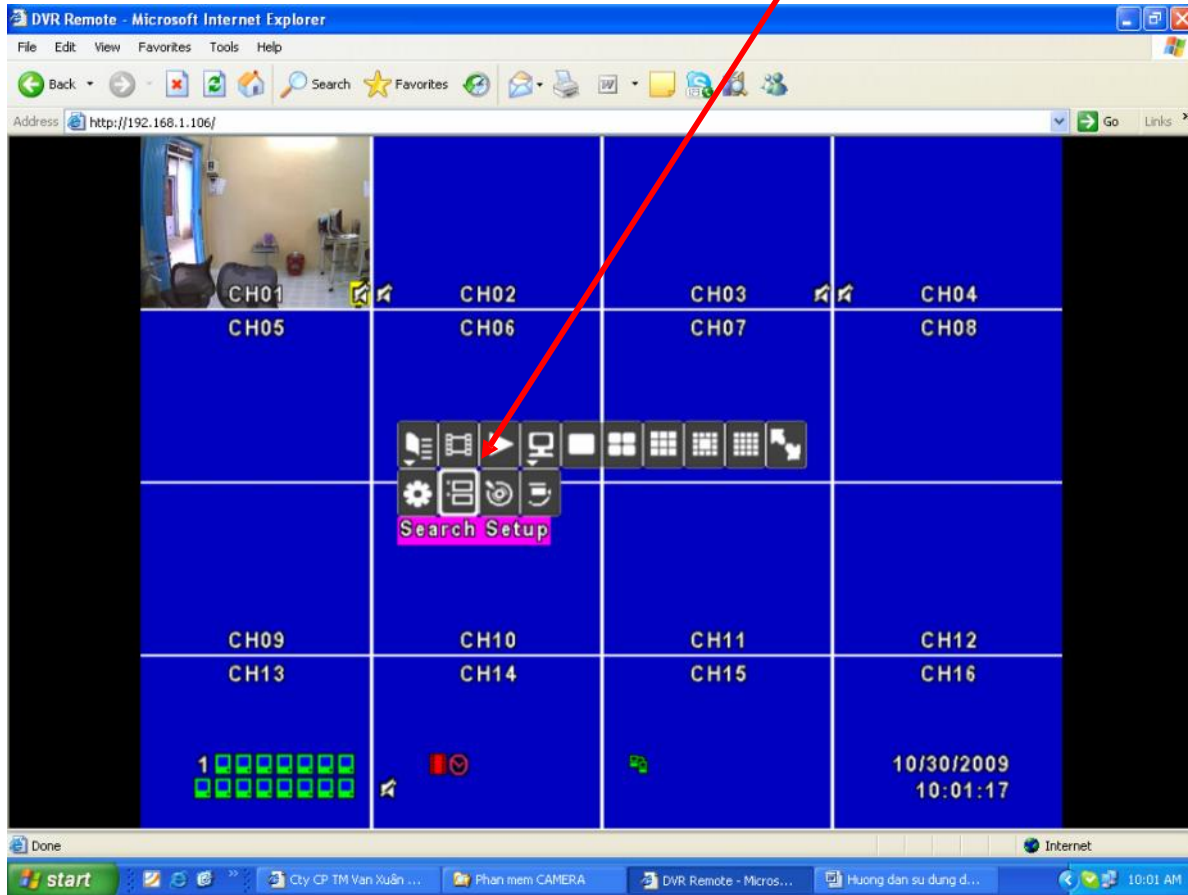
+ ánh d u check m c Enable và m c Schedule – Record Nomal. Sau ó nh n OK



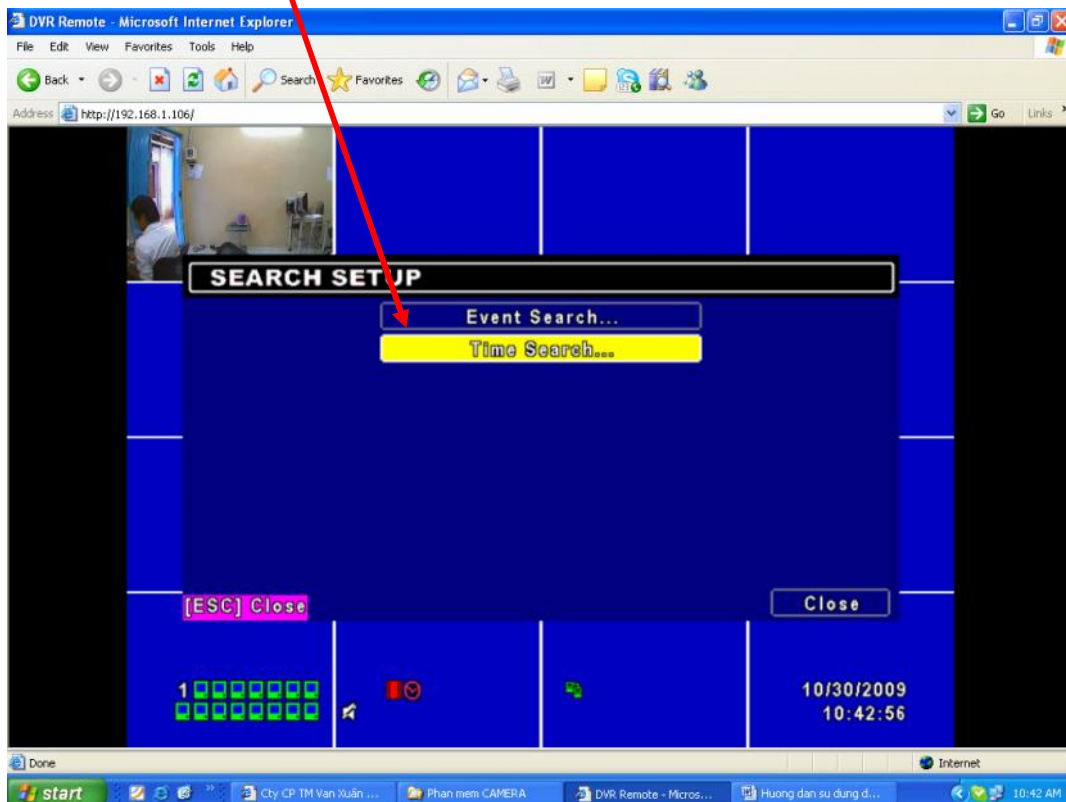
+ T ñng t ñh v y b n c u hình t 4kênh – 8kênh - 16kênh Camera nh ñrên



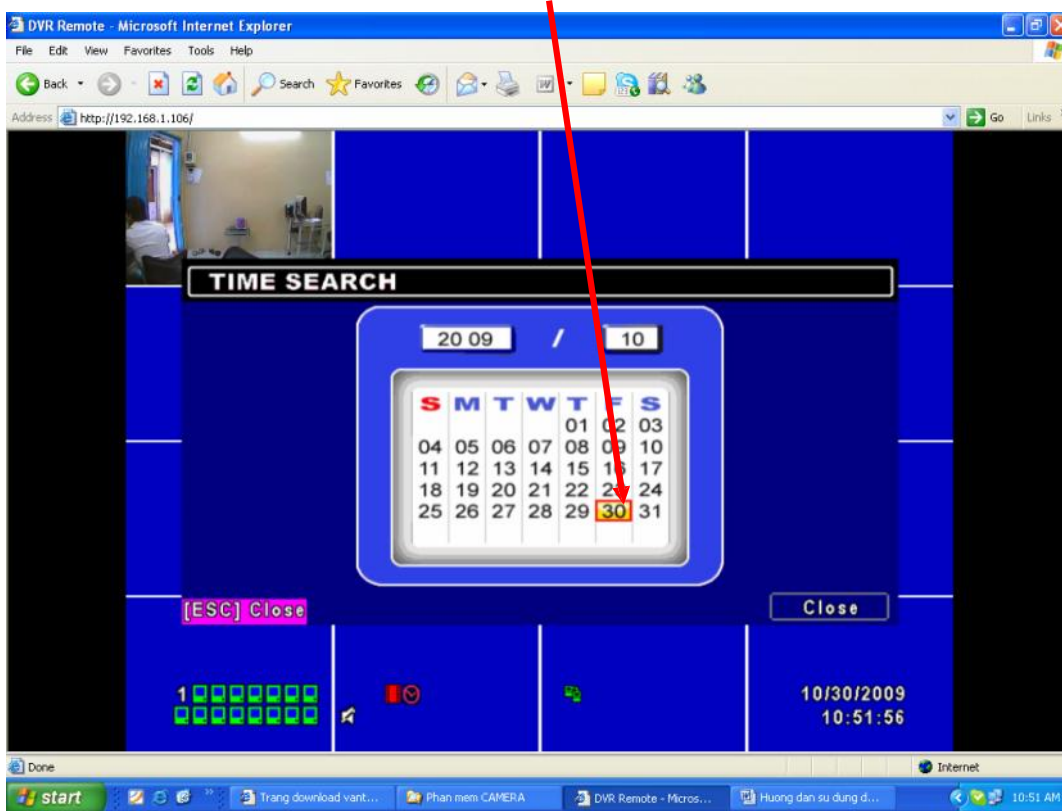
+ Tìm ph n ghi hình theo th i gian, ngày gi . Kịch nút Search Setup



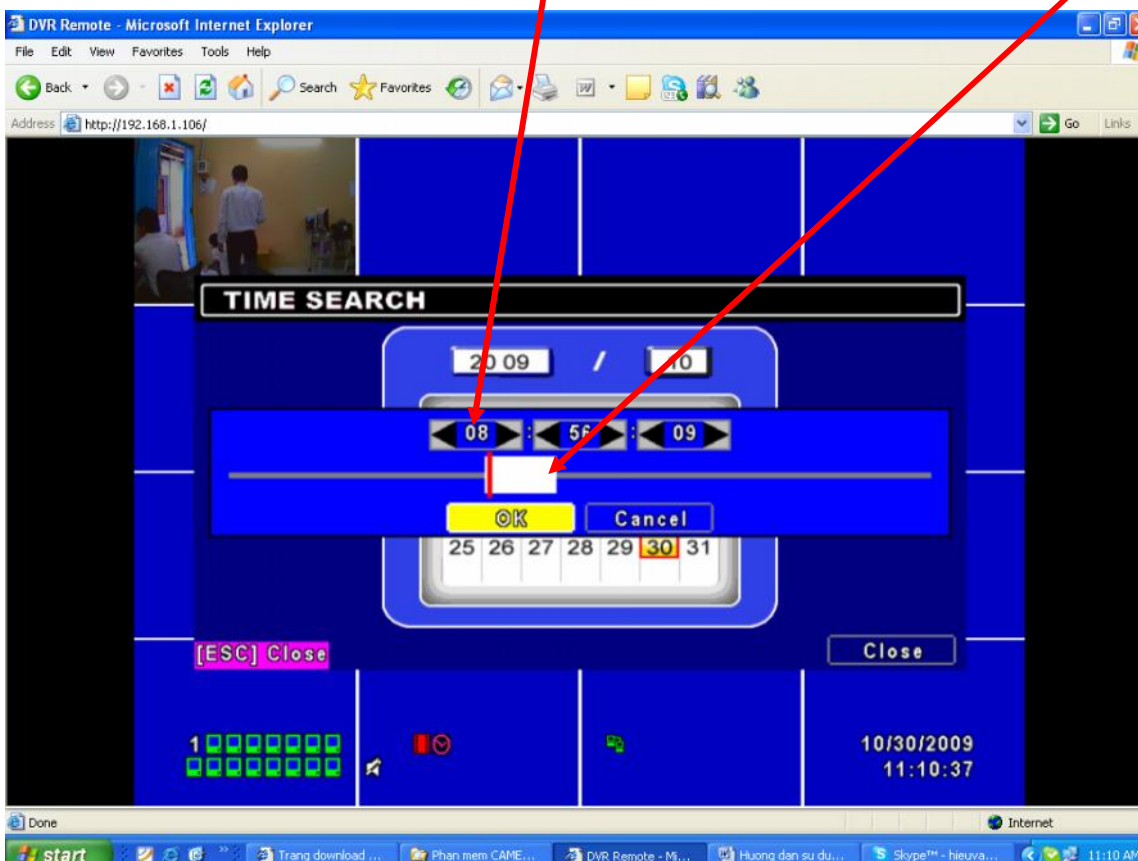
+ Nh n Time Search...



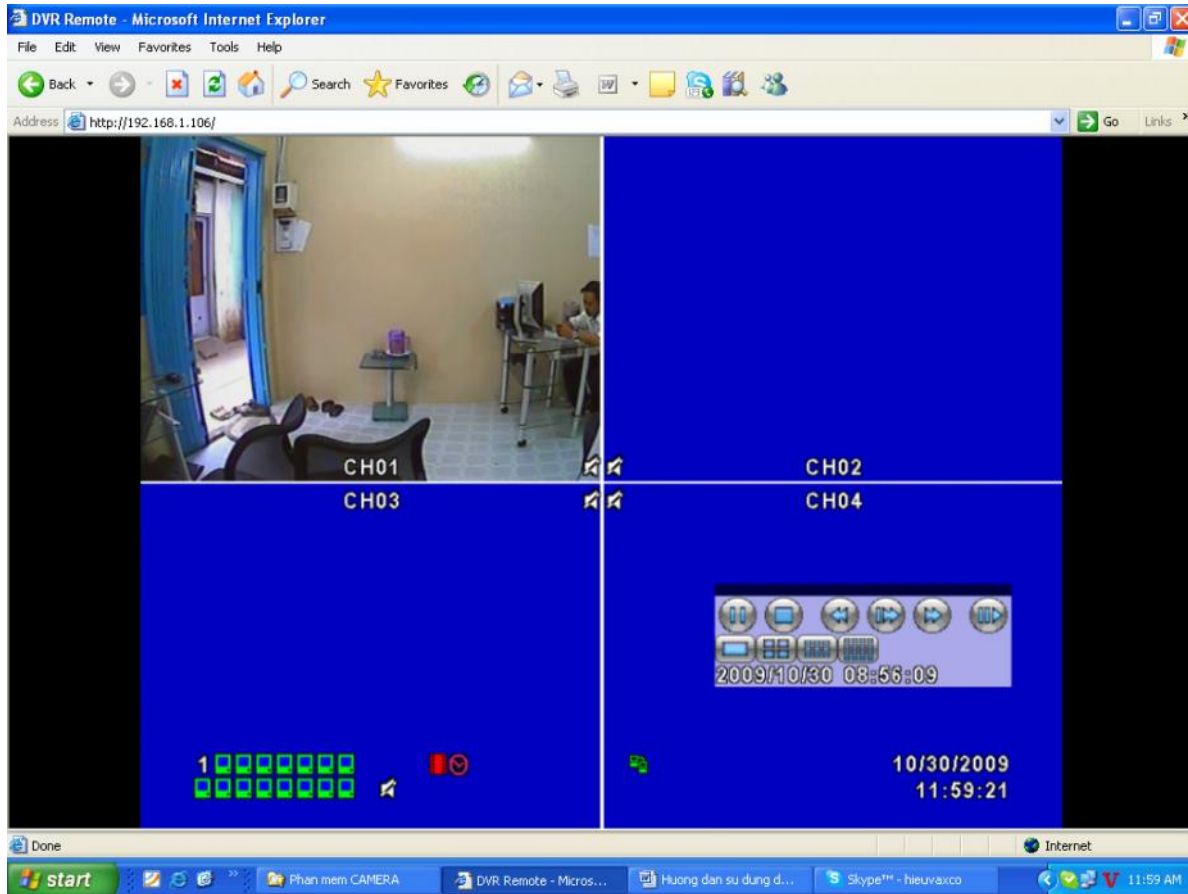
+ Chọn ngày cần xem. VD: Kích chọn ngày 30



+ Chọn giờ cần xem. VD: Nhập giờ 08:56:09 hoặc bạn có thể kéo thanh trượt qua lại. Nhấn OK

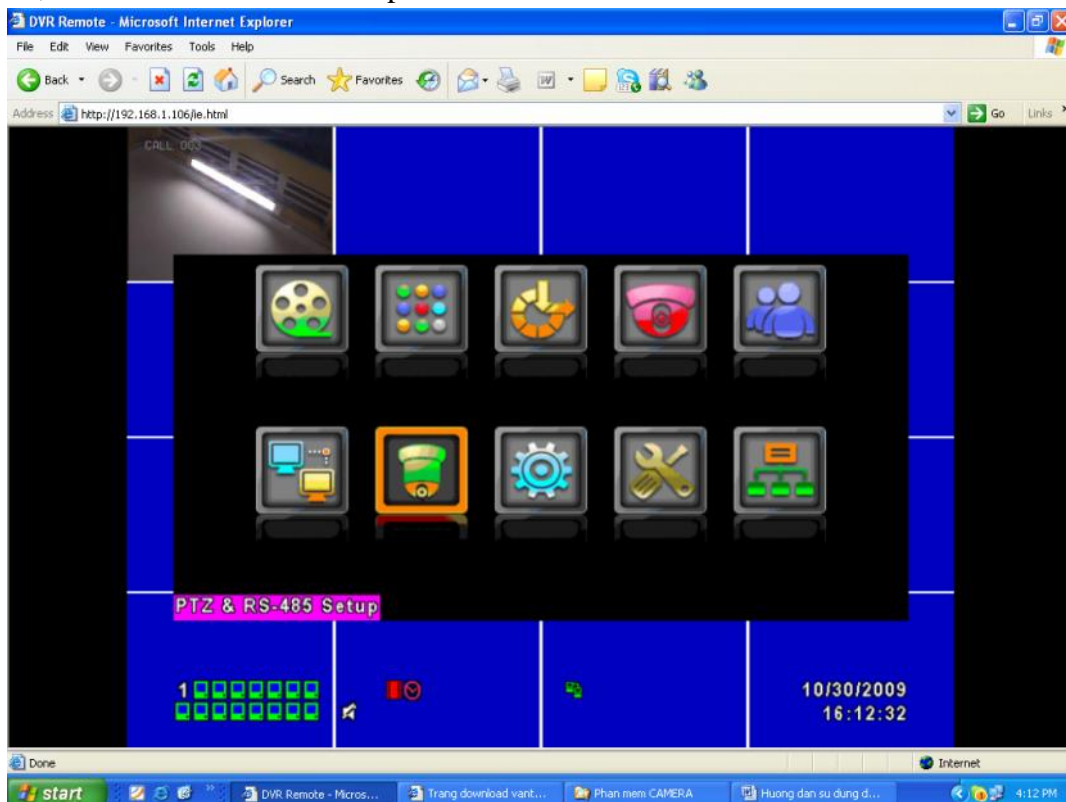


Quá trình ghi hình s theo ngày, gi b n ã ch n.

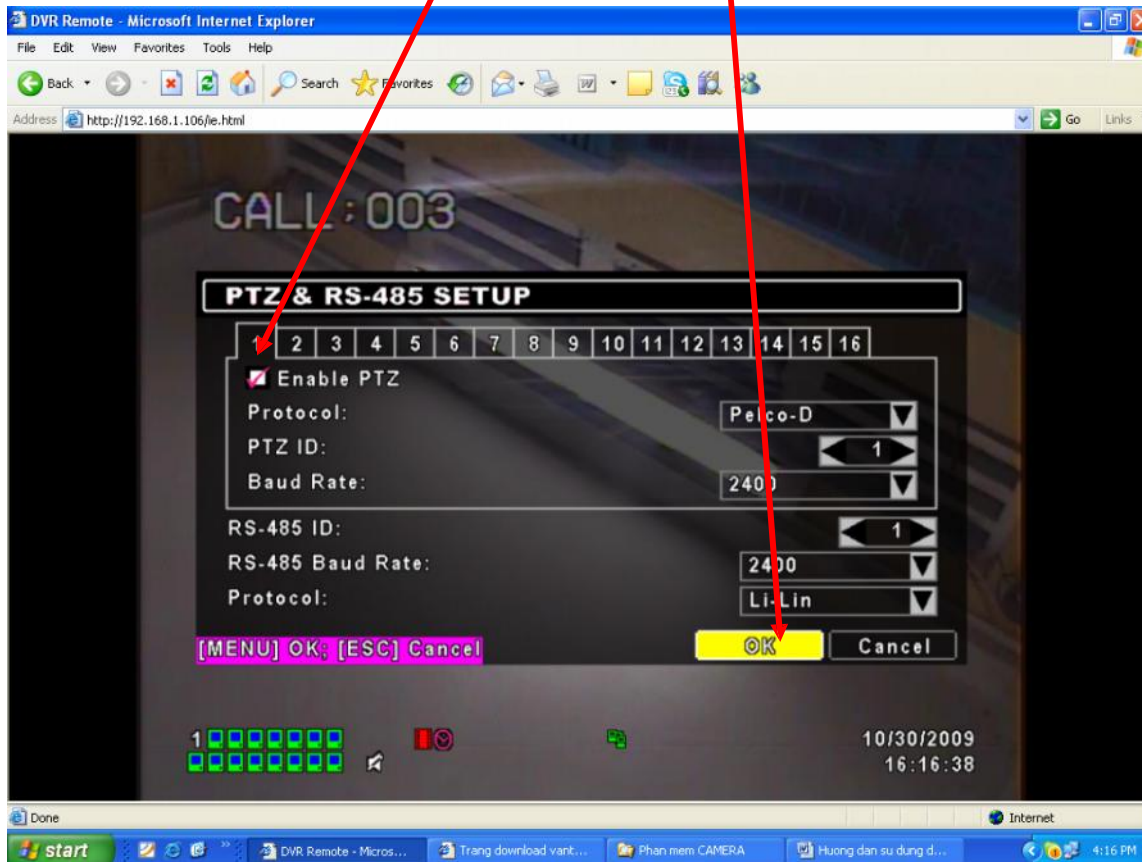


+

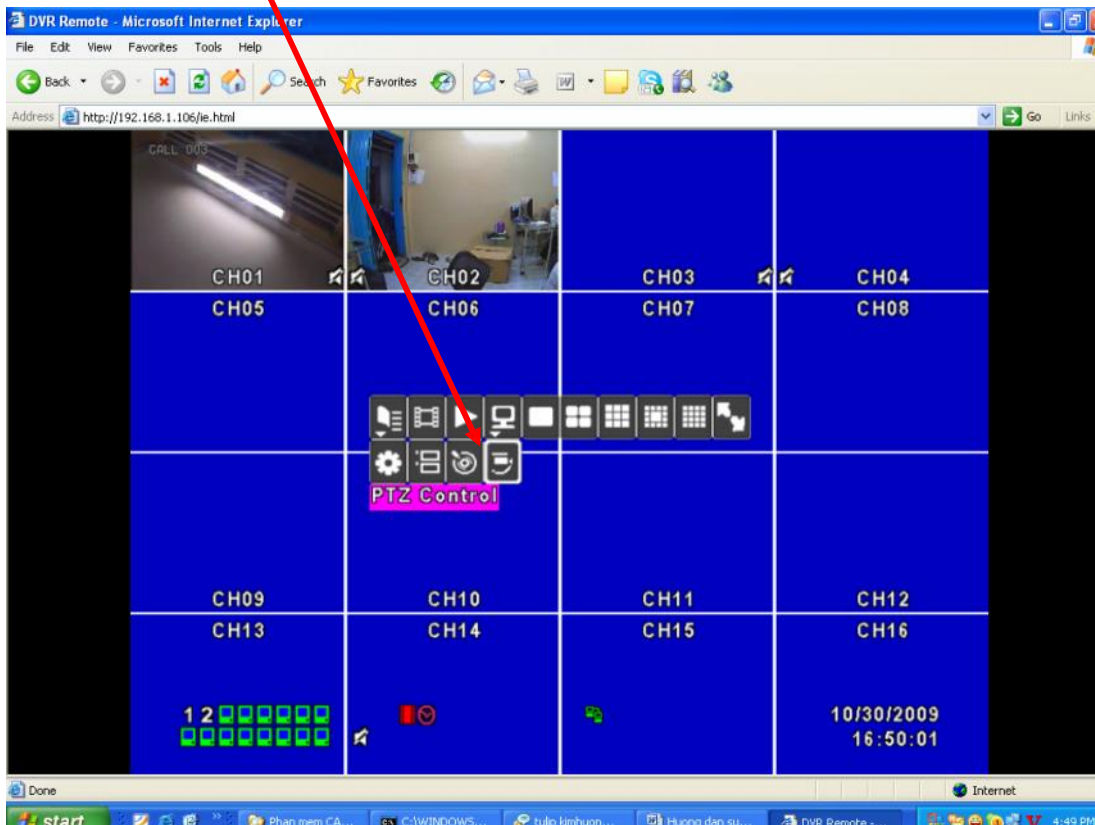
C u hình PTZ, Ch n PTZ & RS 485 Setup



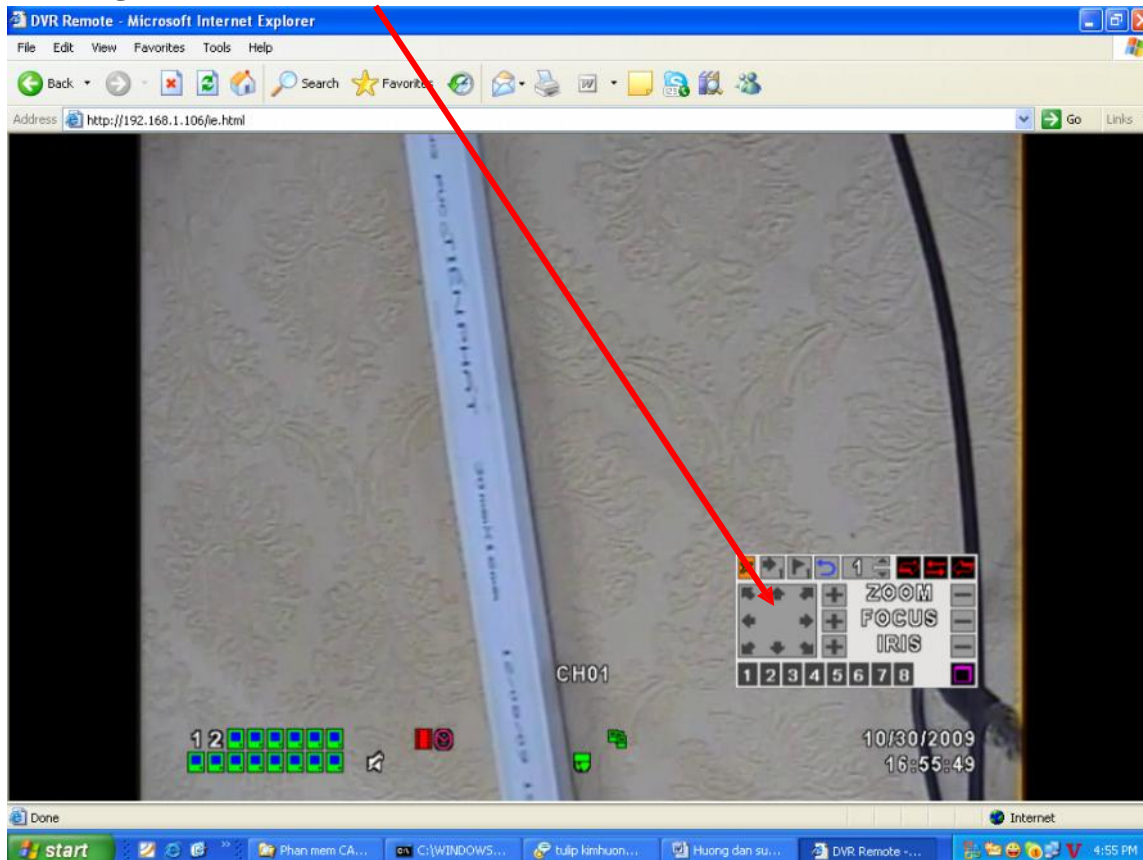
+ ánh d u Check vào ô Enable PTZ, ch n Protocol: Peclco-D, PTZ ID: 1, Baud Rate: 2400, RS-485 ID: 1, RS-485 Baud Rate: 2400, Protocol: Li-Lin. Nh n OK



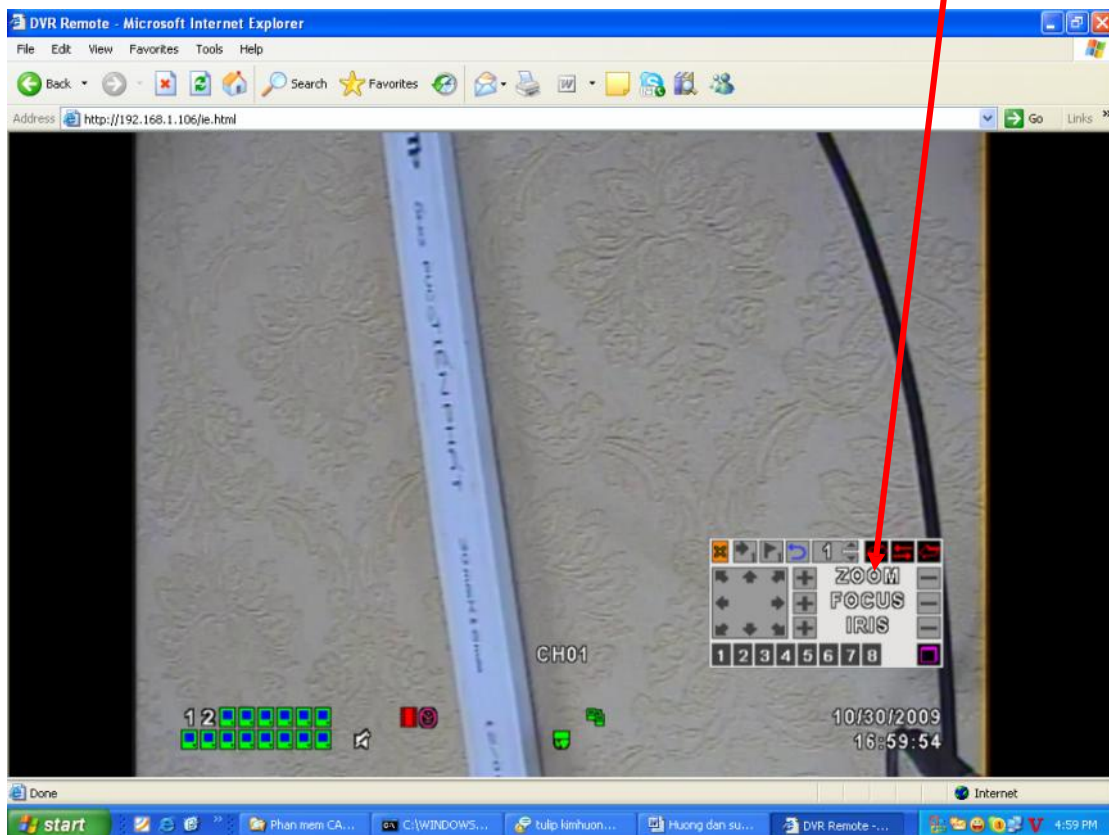
+ Nh n PTZ Control



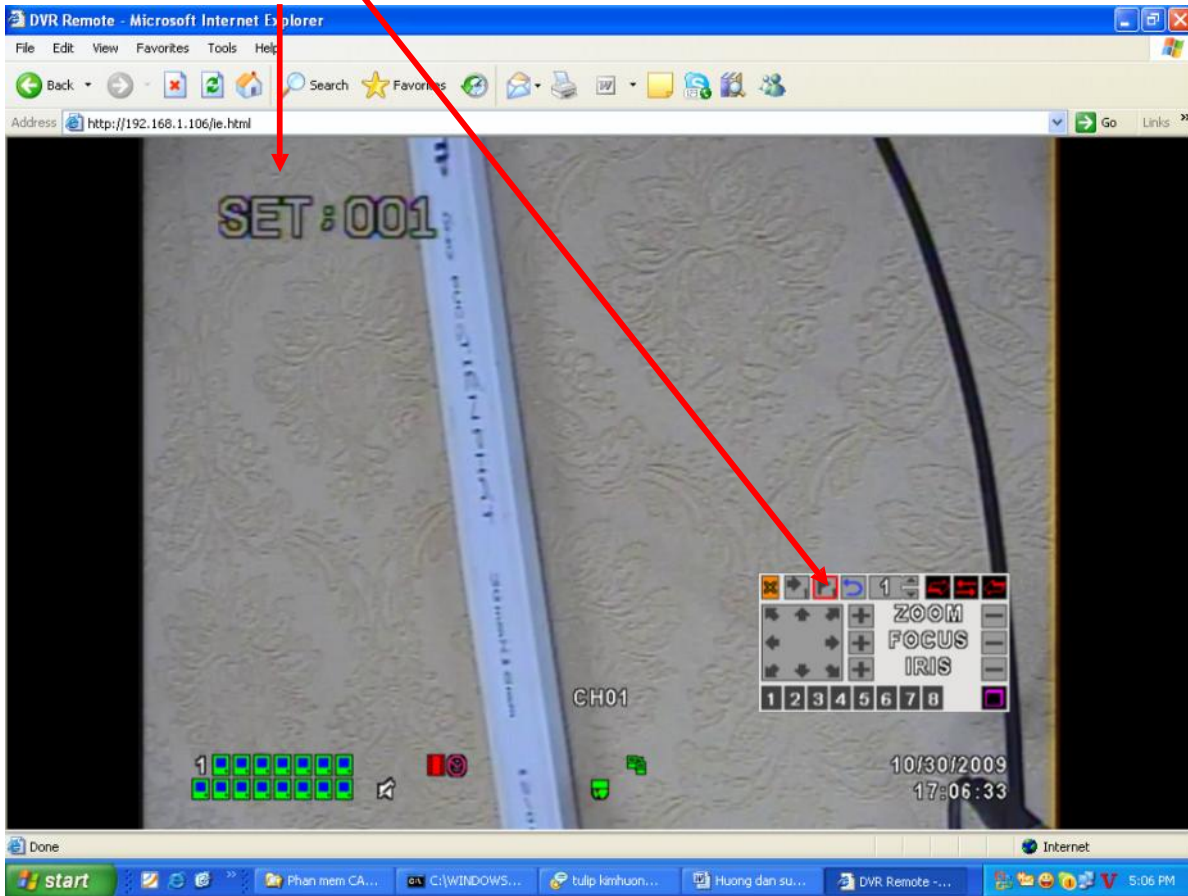
+ Bi u t ng PTZ xu t hi n



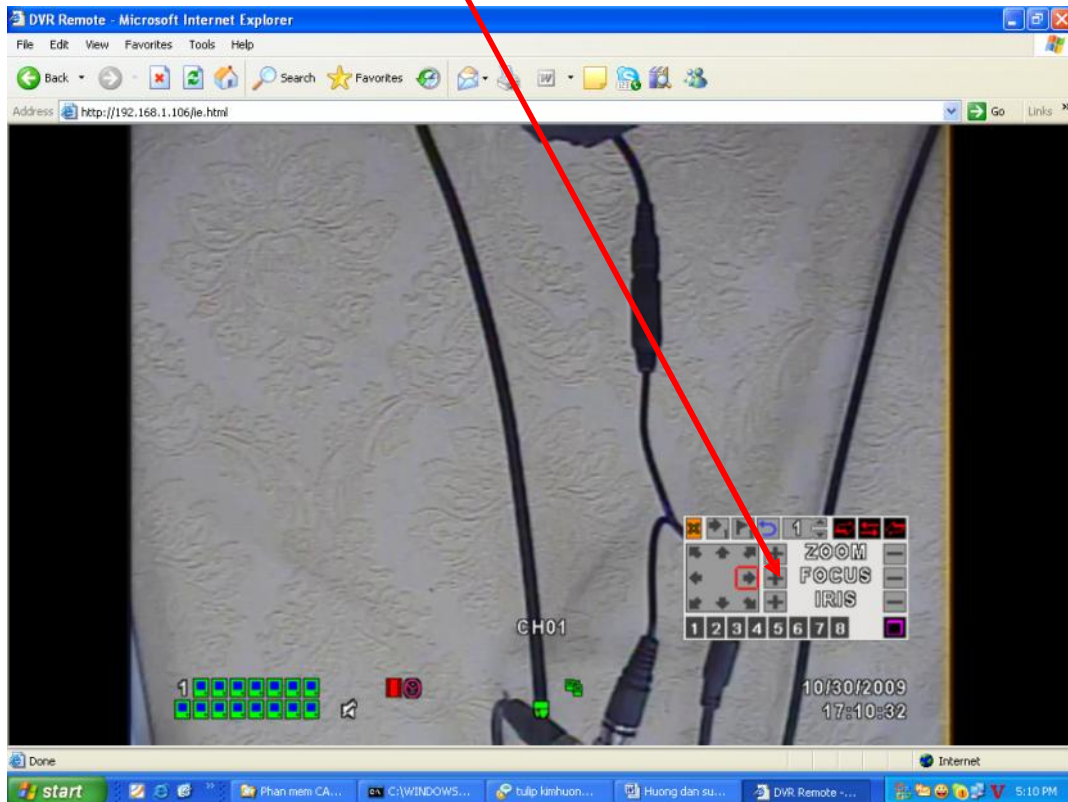
+ Set i m Camera Speed dome. VD: Camera Speed dome VT 9311, ch n s 1



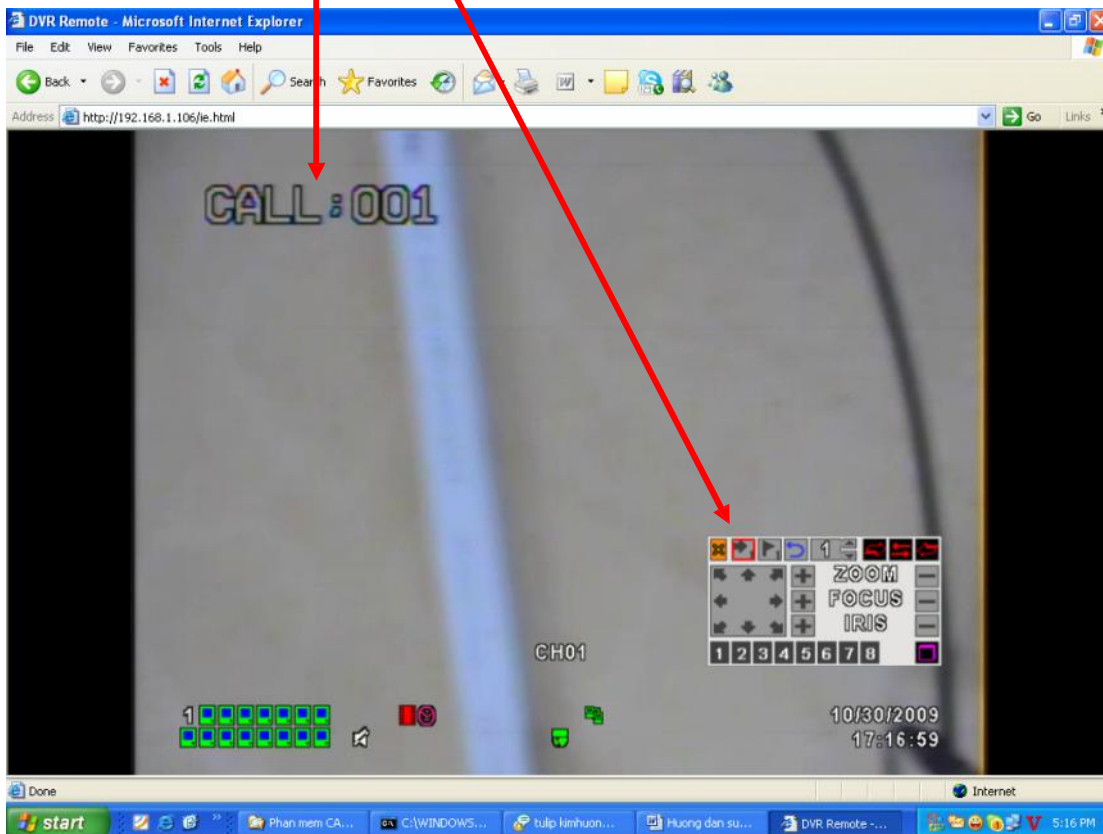
+ Ch n bi u t ng lác



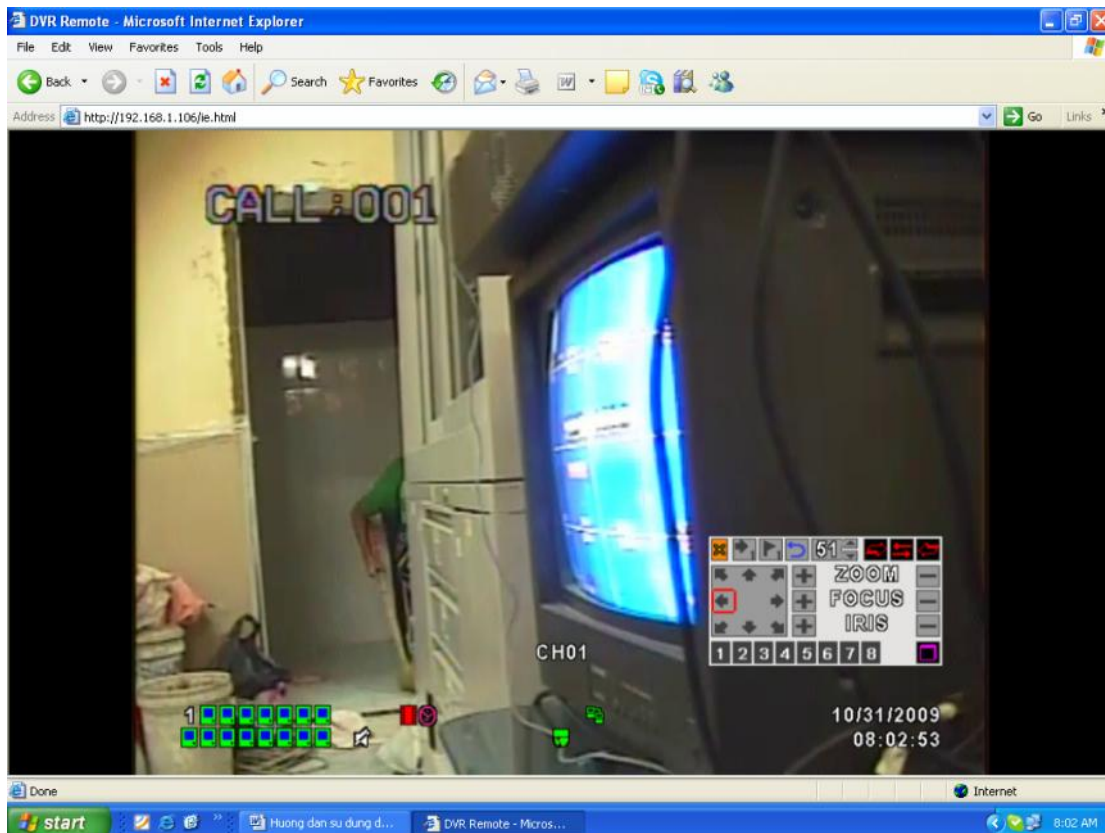
+ Nh n nút m i tên qua ph i, qua trái, lên, xu ng, zoom (+), zoom (-) tùy theo ý t ng c a b n.
VD: Qua ph i, nh n nút m i tên bên ph i



+ Nh n nút m i tên có s 1 g il nh

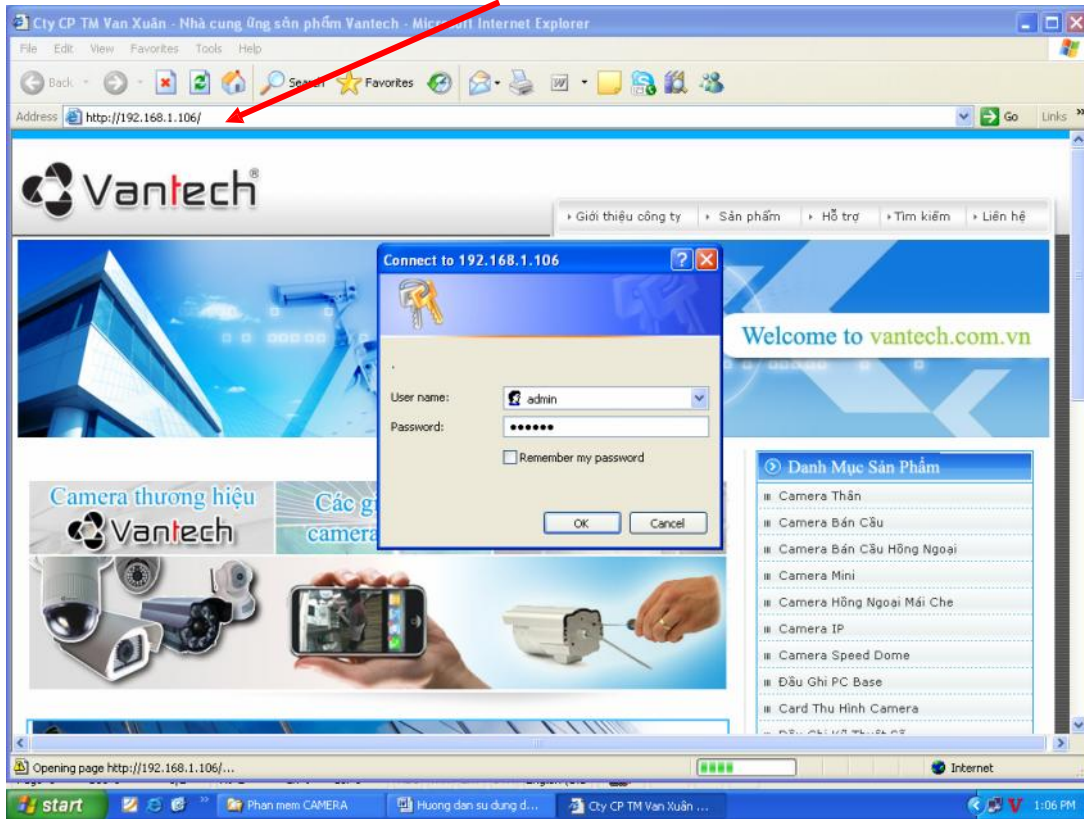


+ T ñng t b n set cho các i m t i p theo, Camera Speed Domeb VT-9311 ch y Auto t ñng s là 54, các i m mà b n ã set khi ch y Auto t ñng s là 51

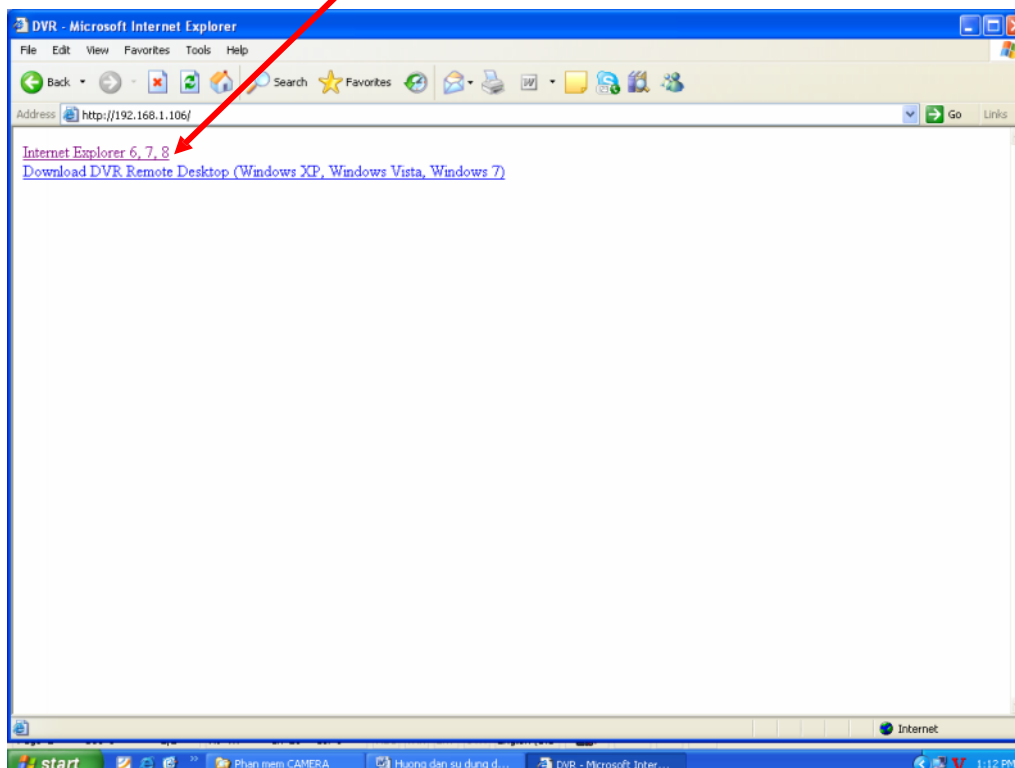


H NG D N XEM N I B U GHI H264 NEW COMPRESSION DVR VT - 4100 - 8100 - 16100 (4CH - 8CH - 16CH)

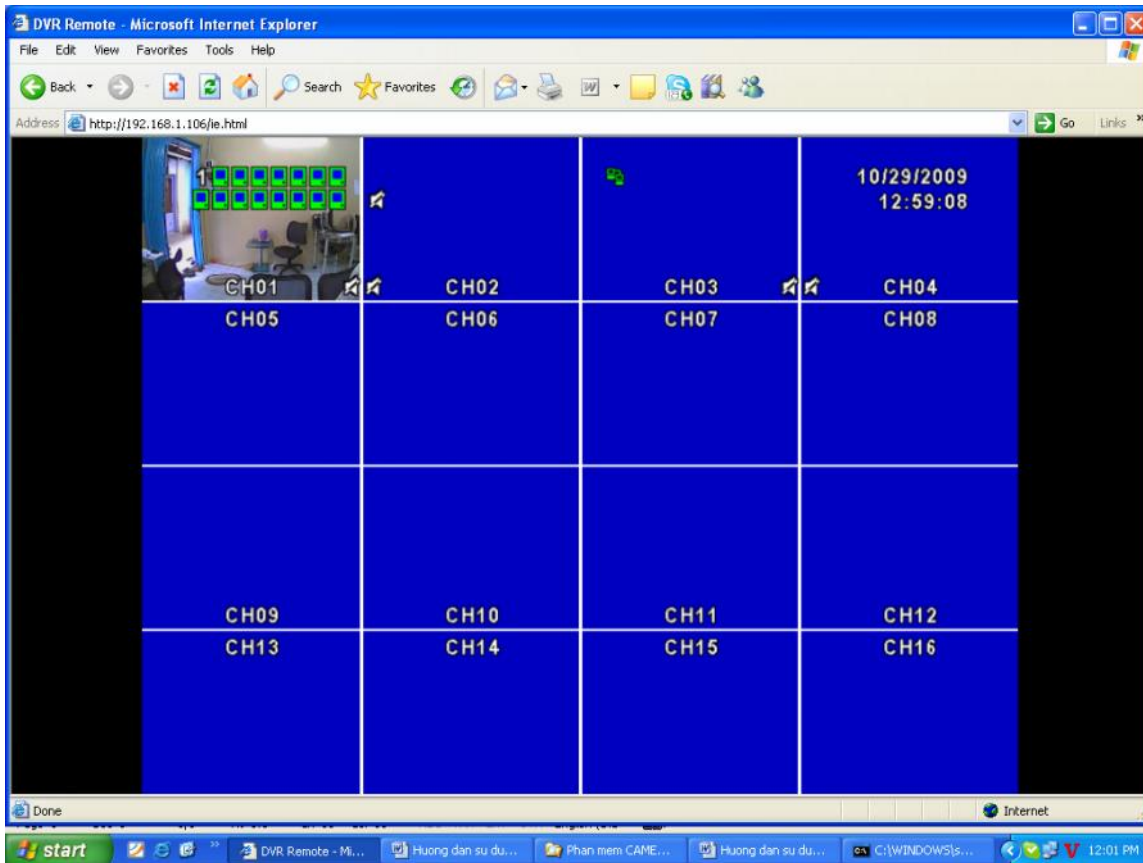
+ M IE (Internet Explorer), gõ <http://192.168.1.106>, User name: Admin, Pass: 123456, t t c c u
hình theo m c nh c a u ghi DVR VT - 4100- 8100 – 16100.



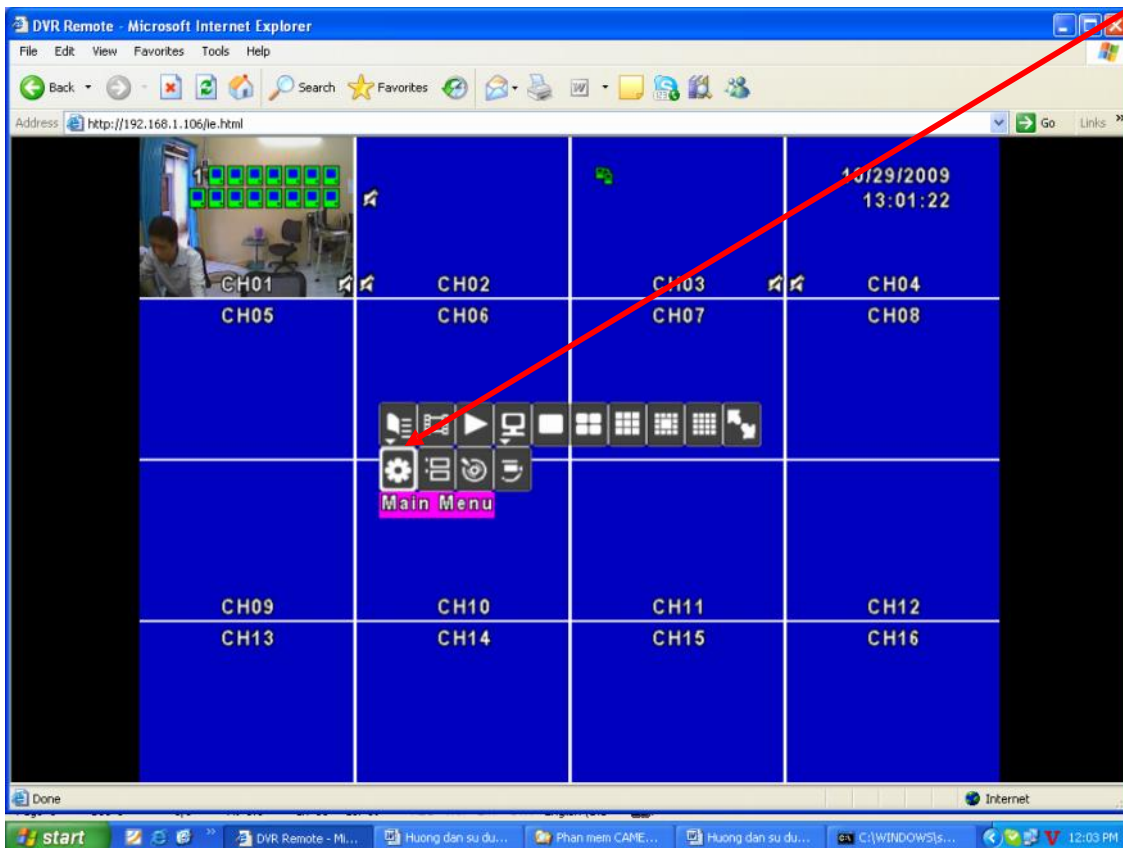
+ Kích ch n Internet Explore 6,7,8



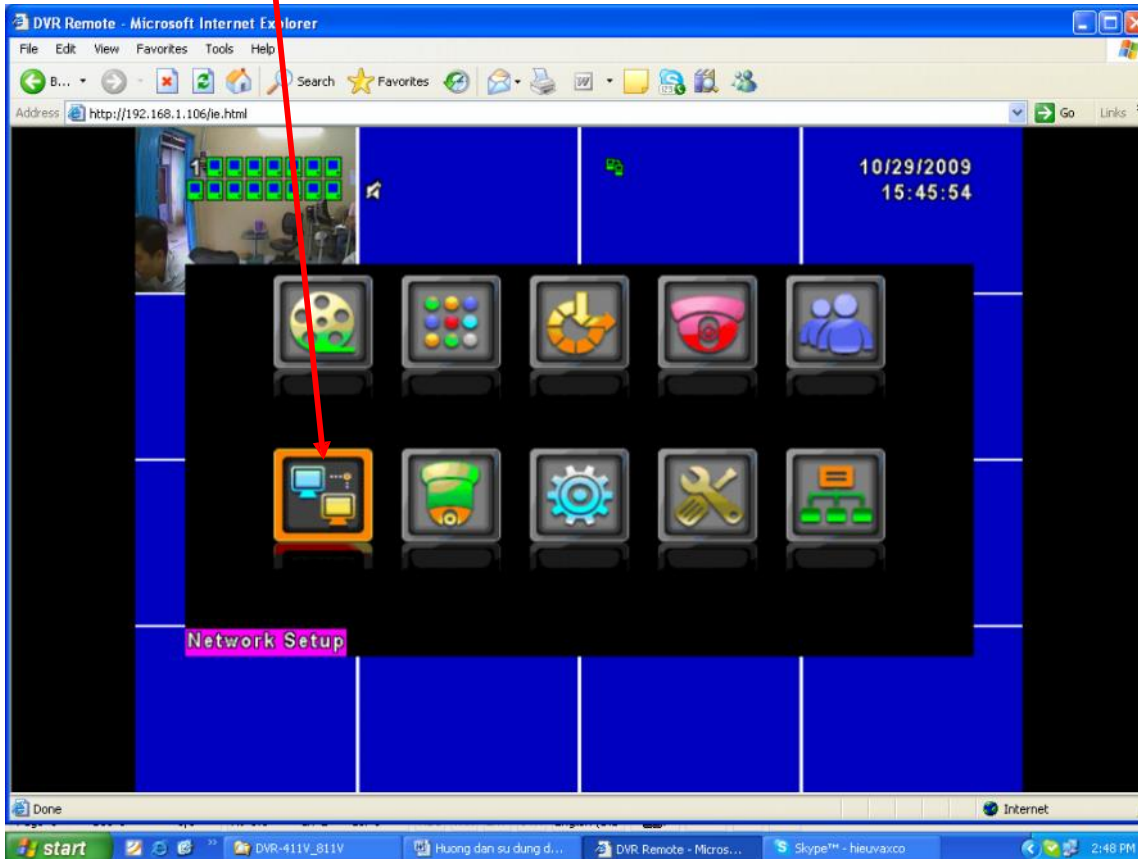
+ Giao di n chính c a màn hình.



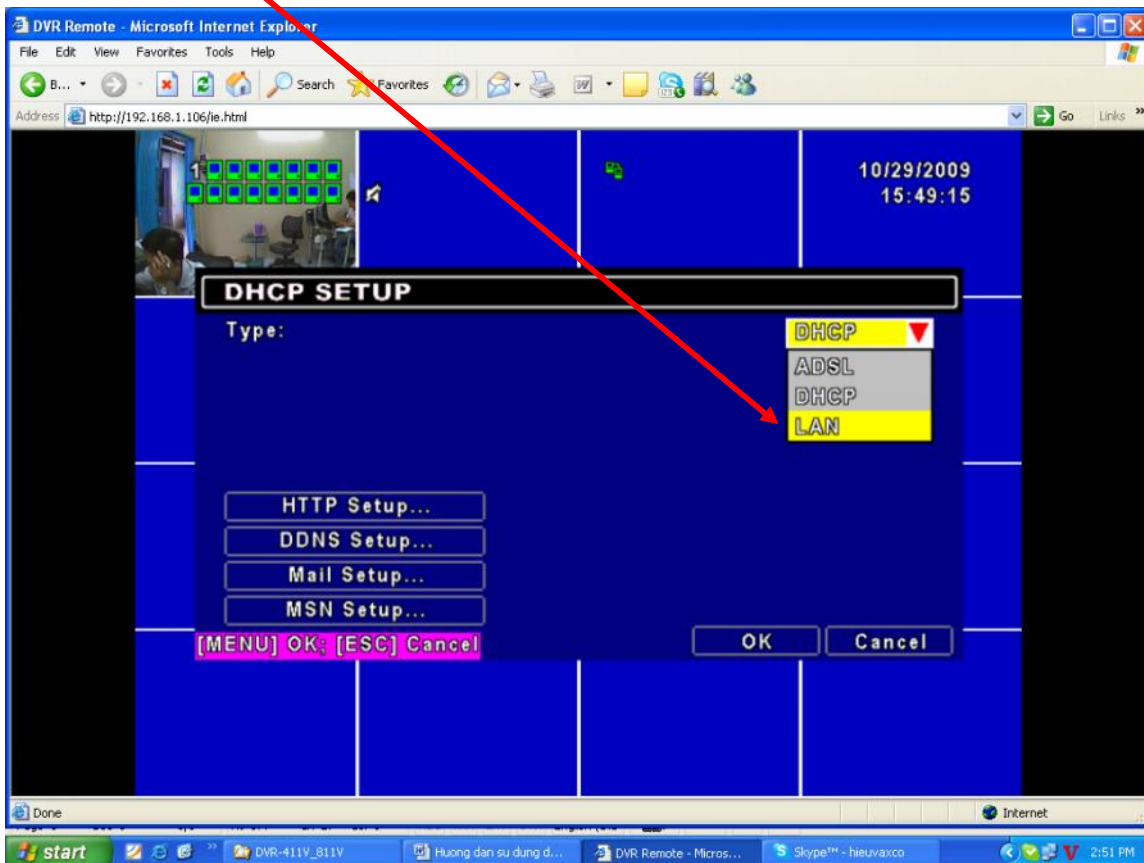
+ B n có th c u hình l i IP b ng cách nh n ph i chu t trên màn hình ch n Main Menu.



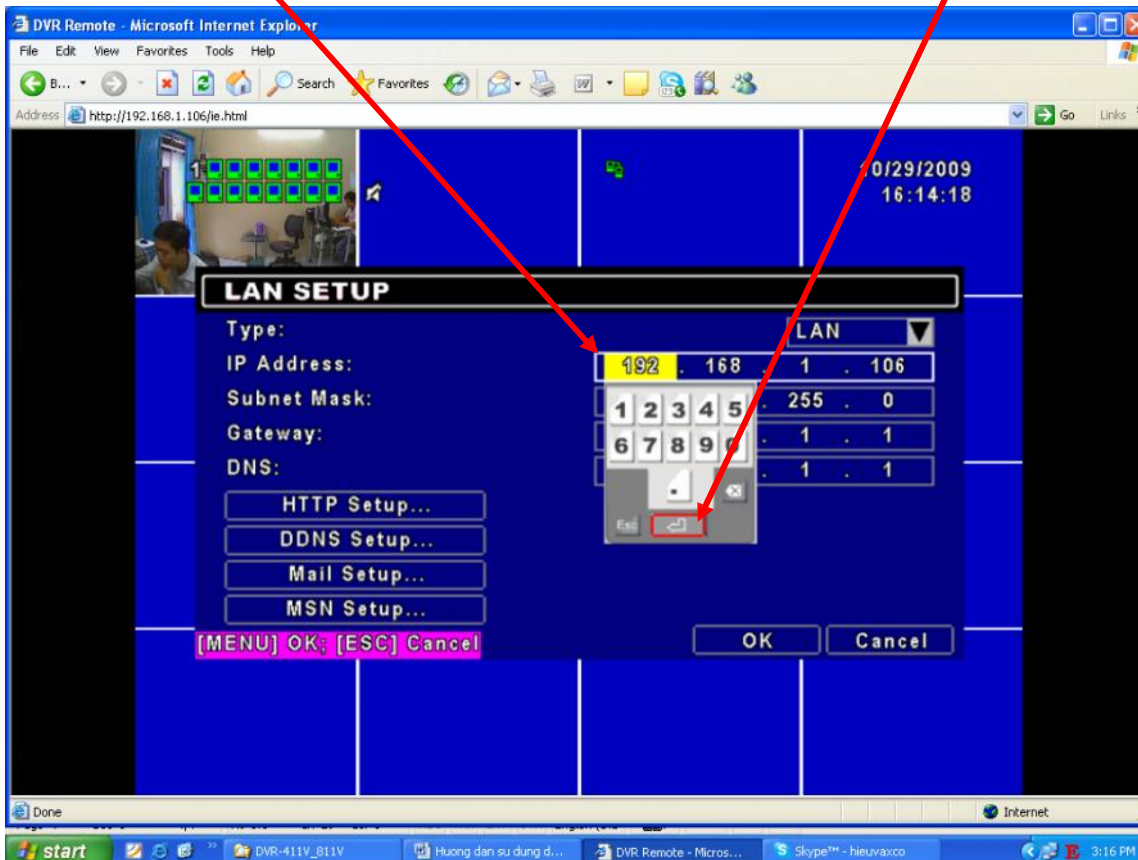
+ Nh n Network Setup.



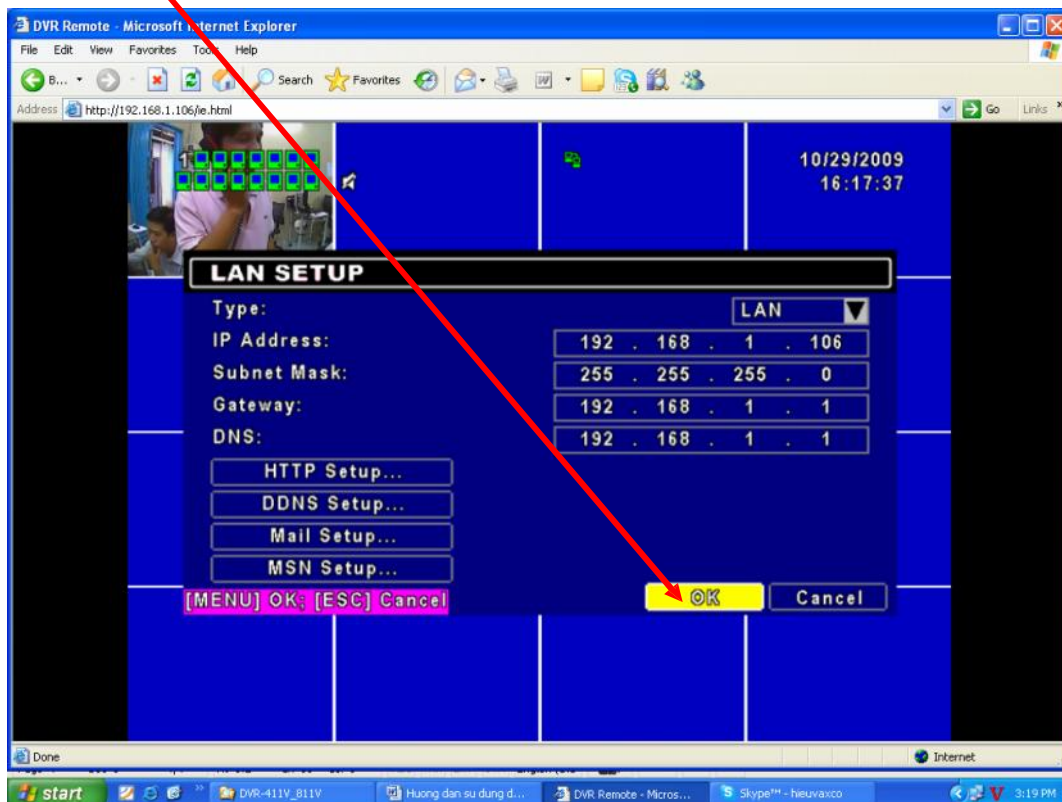
+ Ch n Type: LAN



+ Chọn IP Address (C u hình IP tùy theo l p m ng c a b n ang s d ng). VD: IP Address: 192.168.1.x, Subnet Mask: 255.255.255.0, Getway: 192.168.1.x, DNS: 192.168.1.x. Nh n Enter.



+ Nh n OK



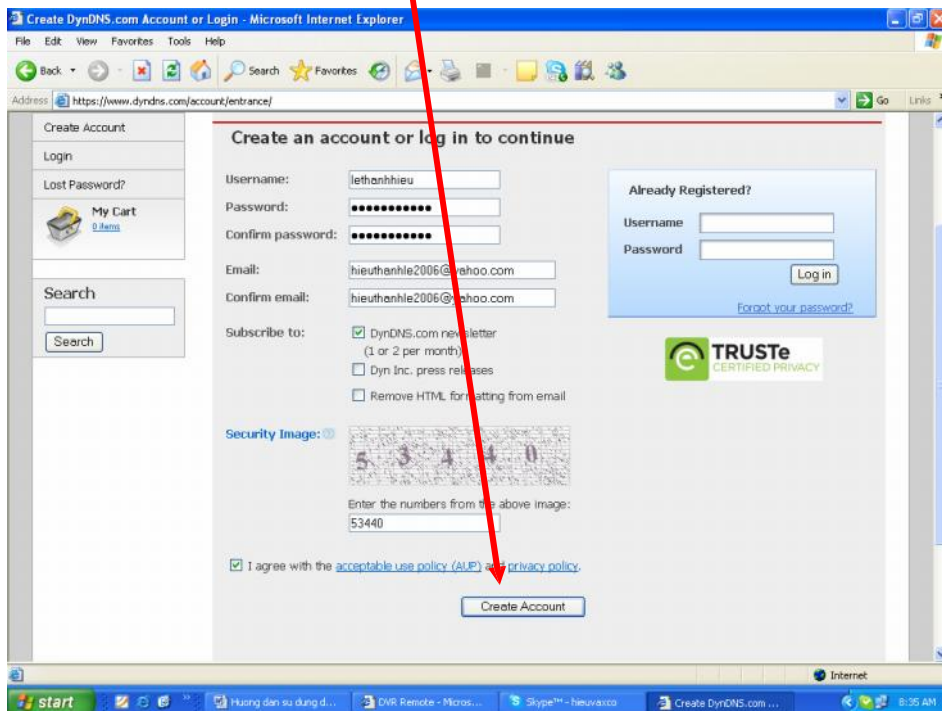
H Ị NG D Ị N C Ụ H Ị NH XEM QUA M Ị NG Ụ GHI H264 NEW COMPRESSION DVR VT - 4100 - 8100 - 16100 (4CH - 8CH - 16CH)

+ T ờ Host Name tên m ị n DNS. M ị IE, gõ <http://www.dyndns.com>. Nh ậ n Create Account.

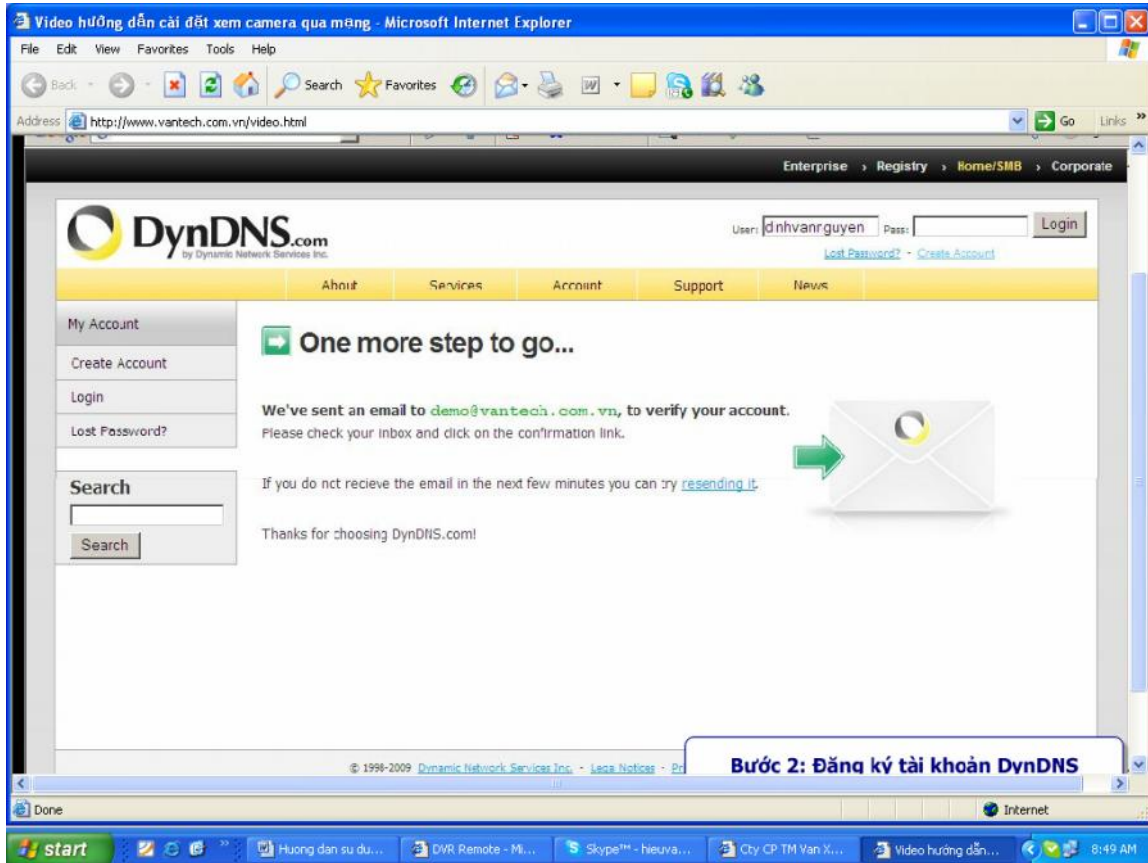


+ G ỡ thông tin ỹ trong ph ậ n Creat Account. VD: Username: xxxx, Pass: xxxx, Email: xxxx.
Nh ậ n Creat Account

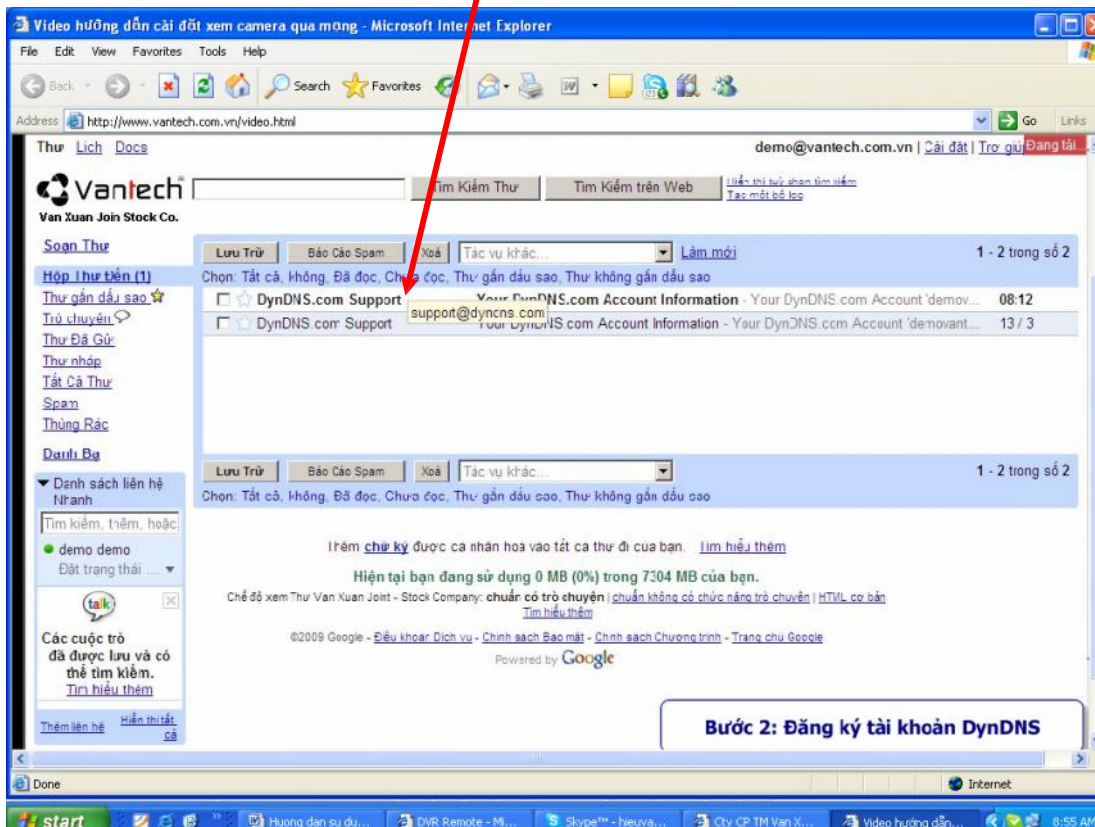
L ưu ý: Account trên trang DNS cho phép s ậ đ ặ ng 11 n tài kho ậ n Email và t ậ i 5 Host Name .



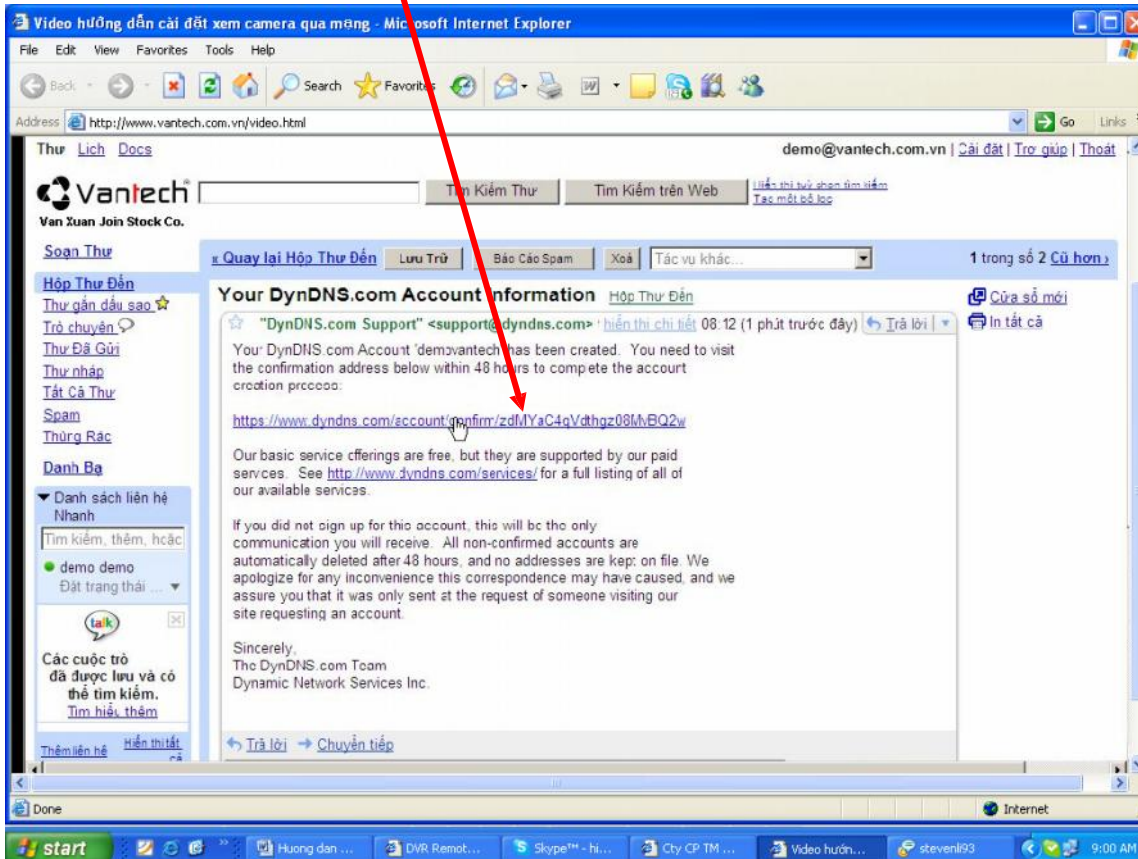
+ Sau khi ng ký xong, b n vào h p th email, kích ho t ng Link c a DNS nó m i ho t ng c



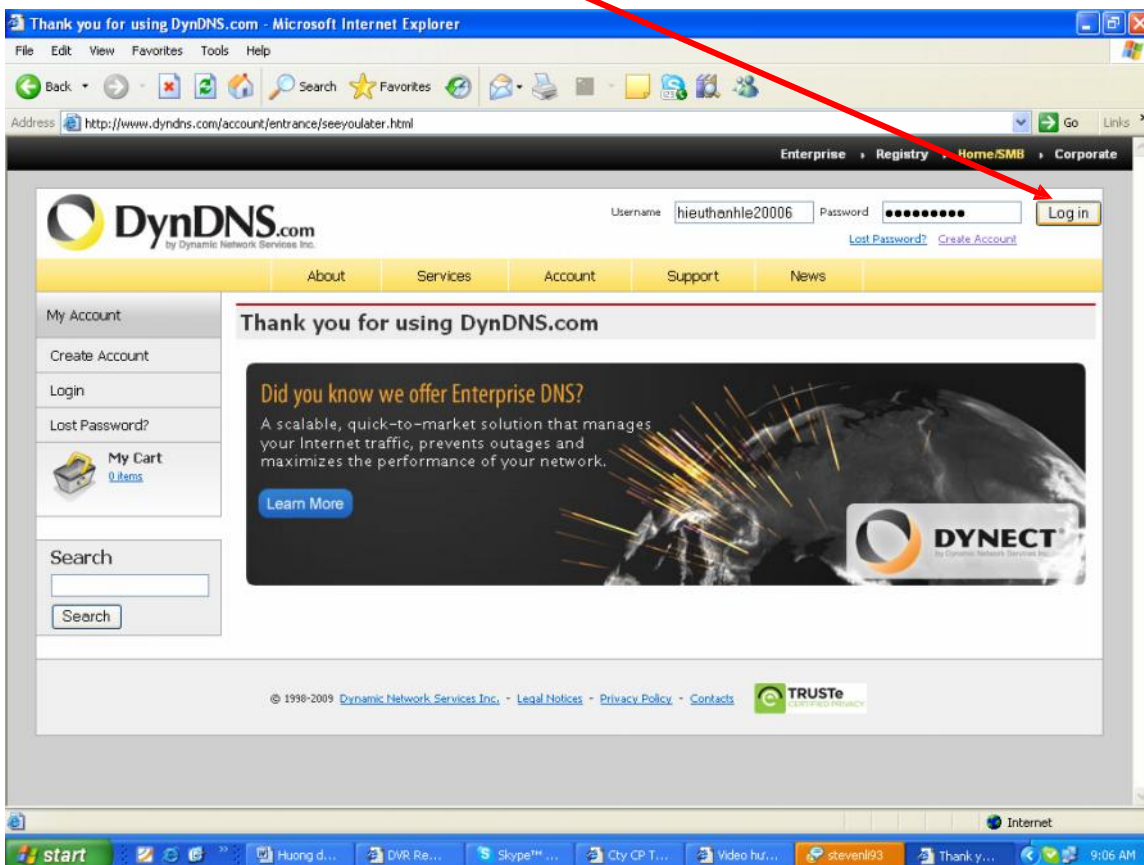
+ M h p th email kích ho t ng link



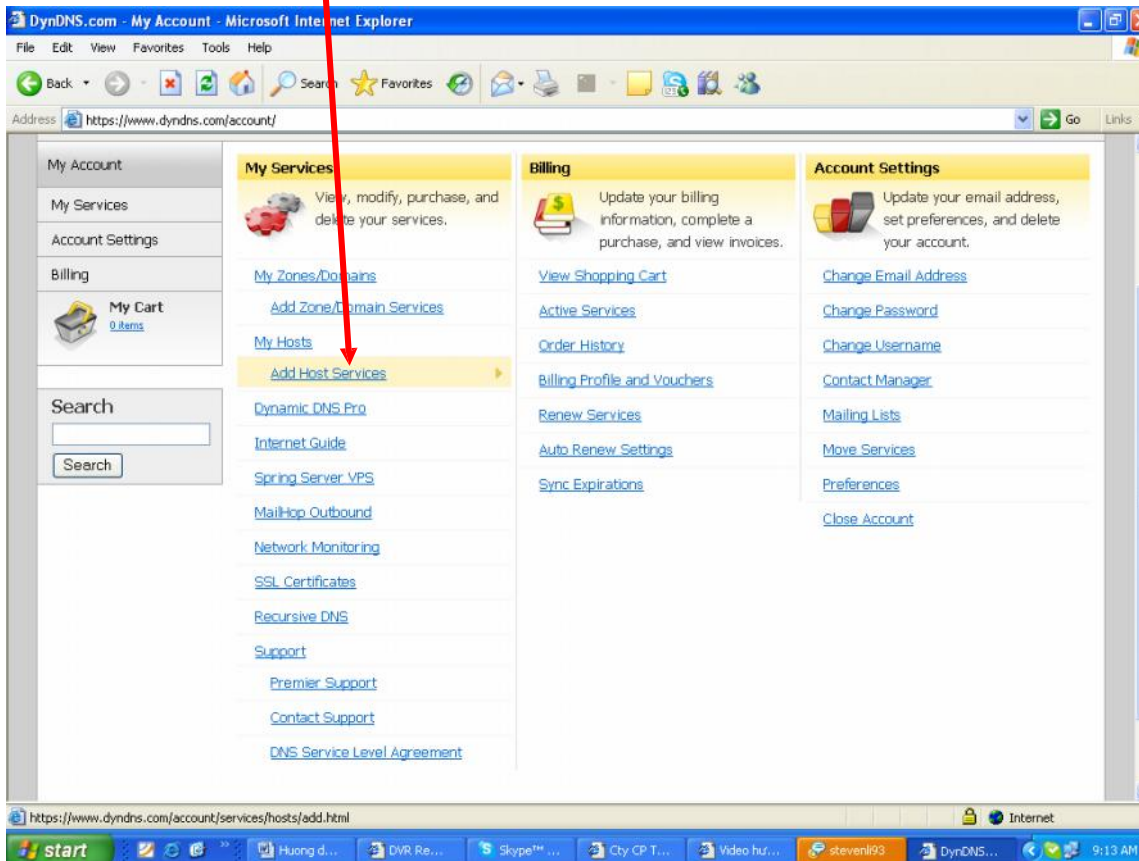
+ Đây là link của DynDNS.com



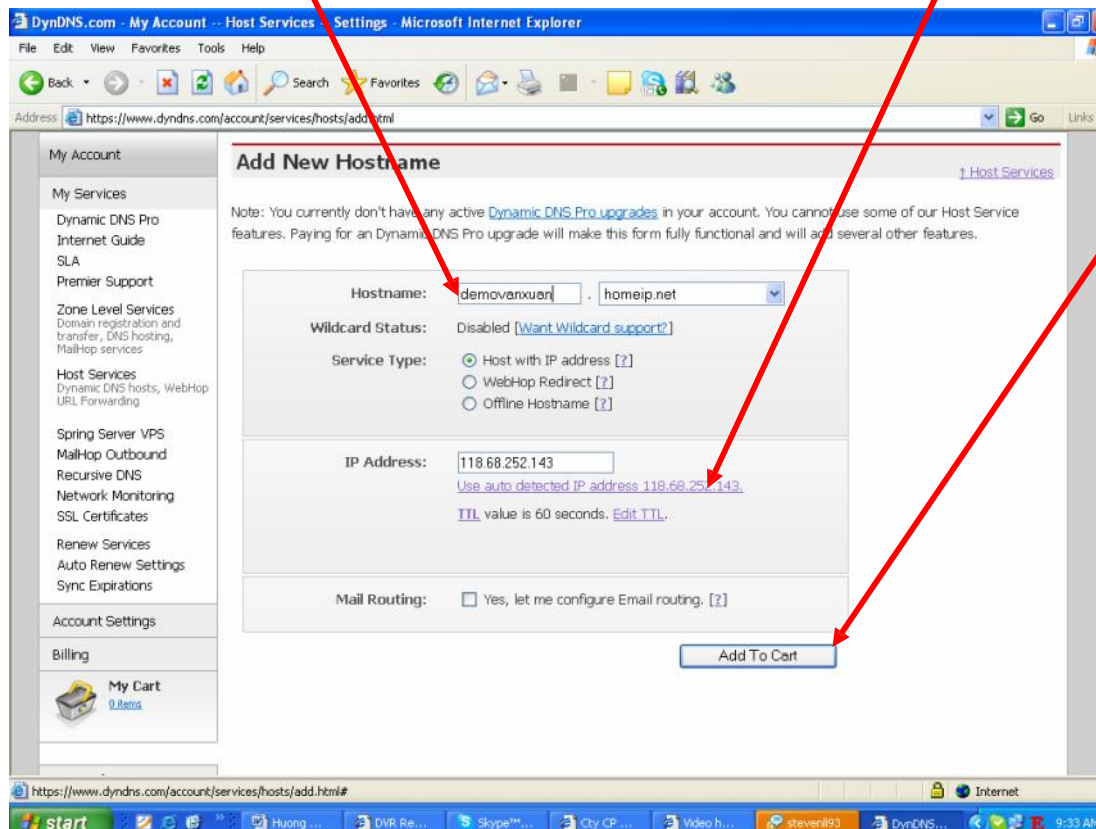
+ Gõ Username và Password vào ô Nhập Login



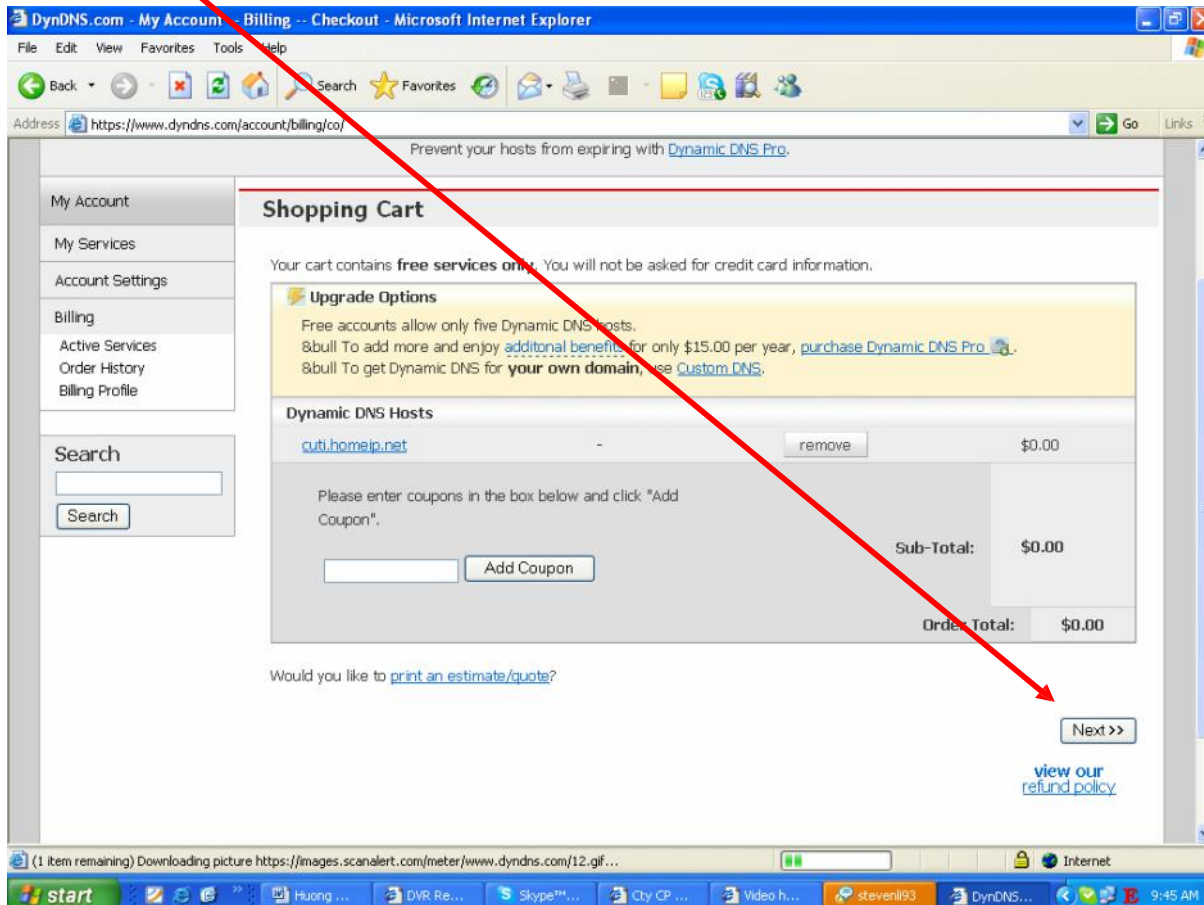
+ Nh n Add Host Services



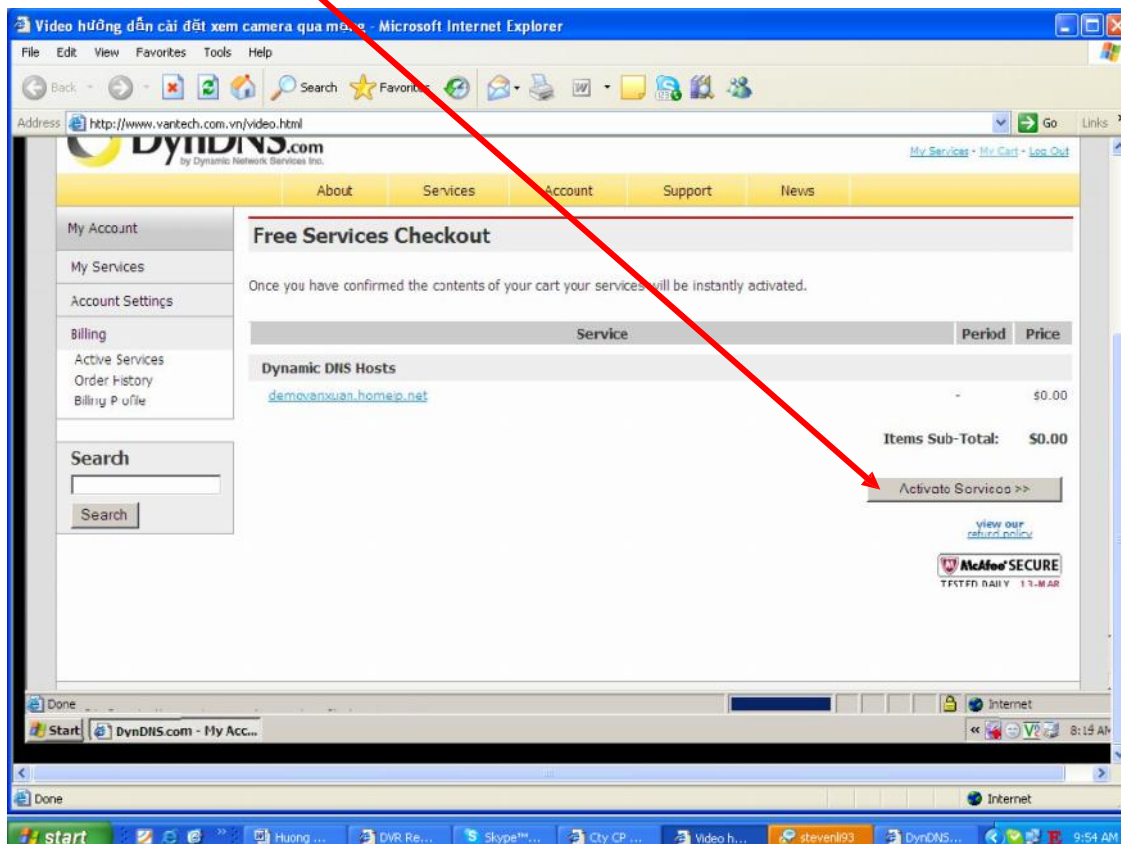
+ Gõ Host c n t o. VD: demovanxuan.homeip.net, kích User auto detected IP 118.68.252.143. Nh n Add To Cart.



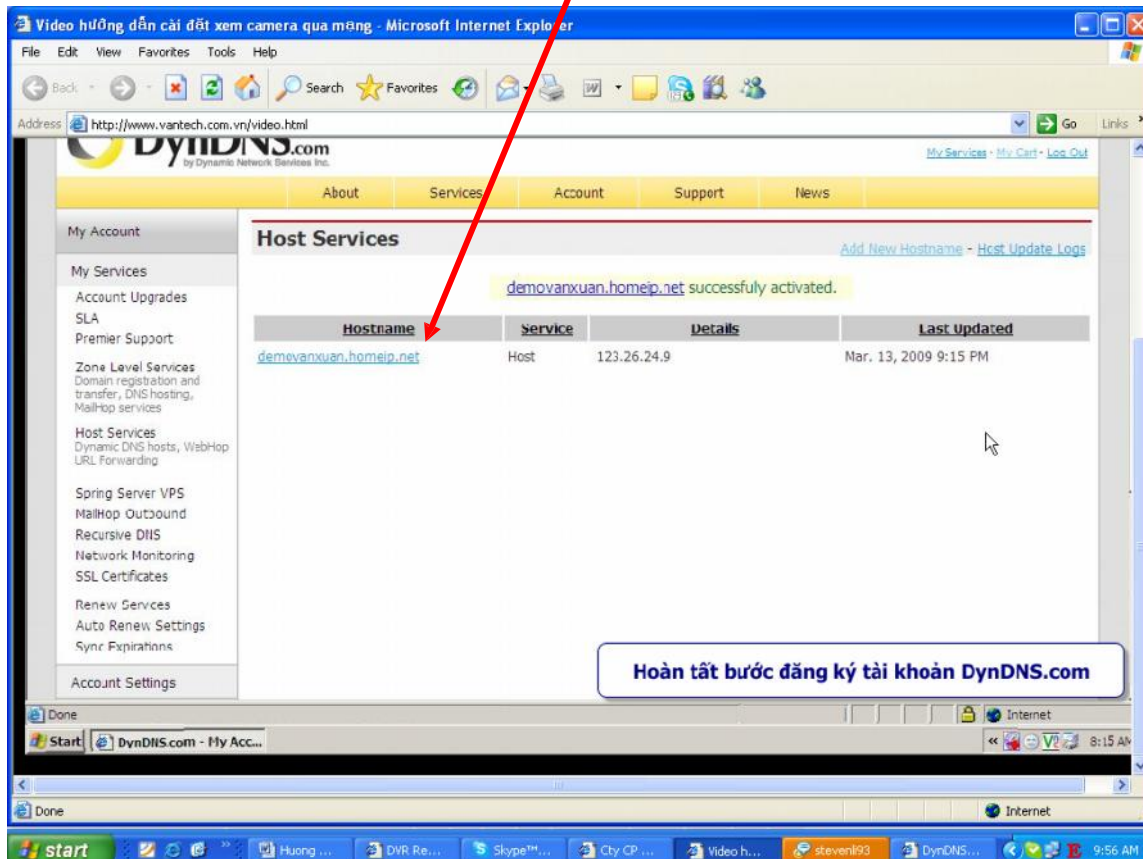
+ Nh n Next



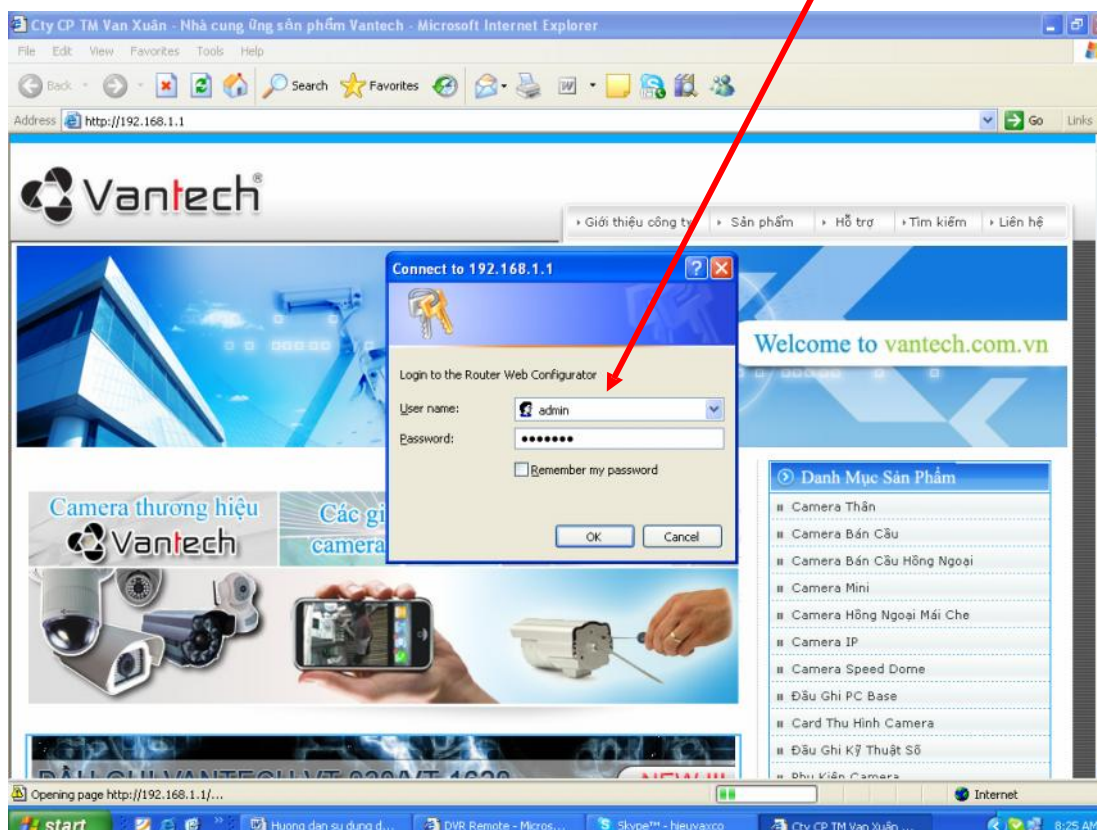
+ Nh n Activate Services.



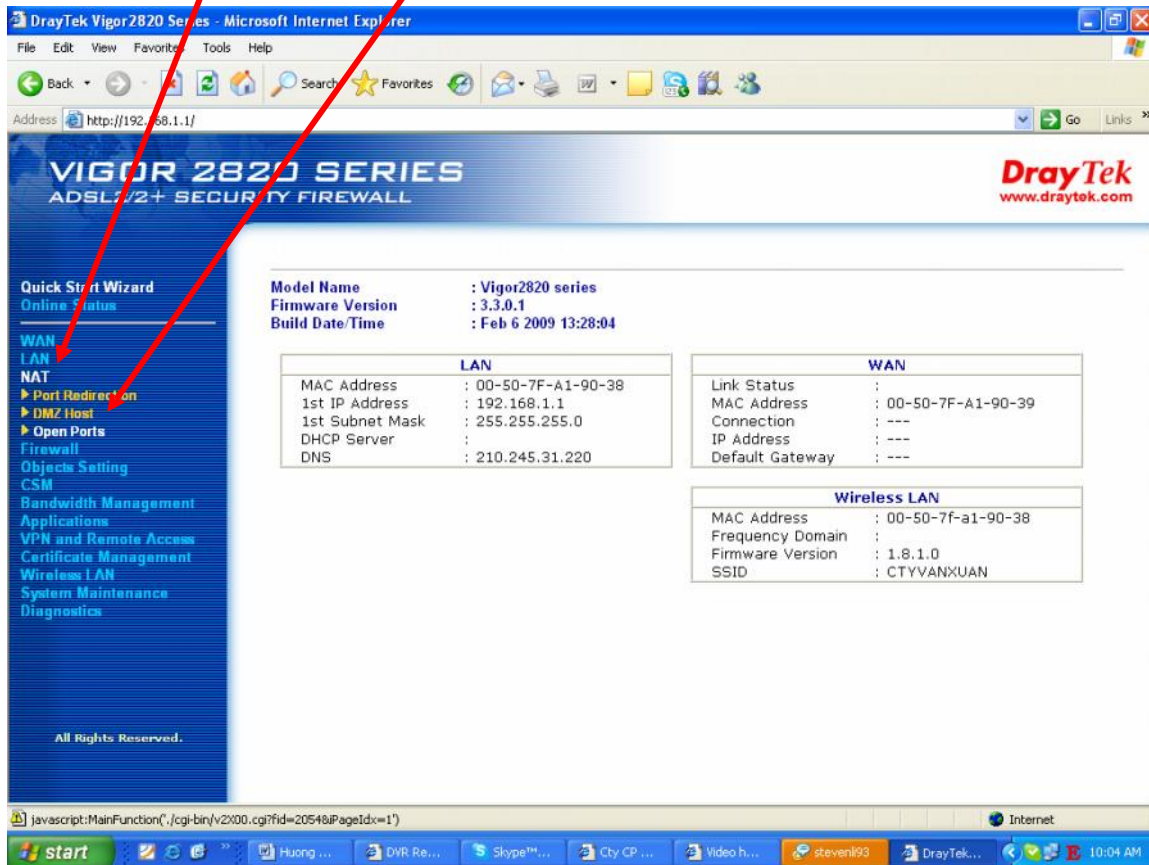
+ Đây là Host Name tiên mi n chúng ta v a t o.



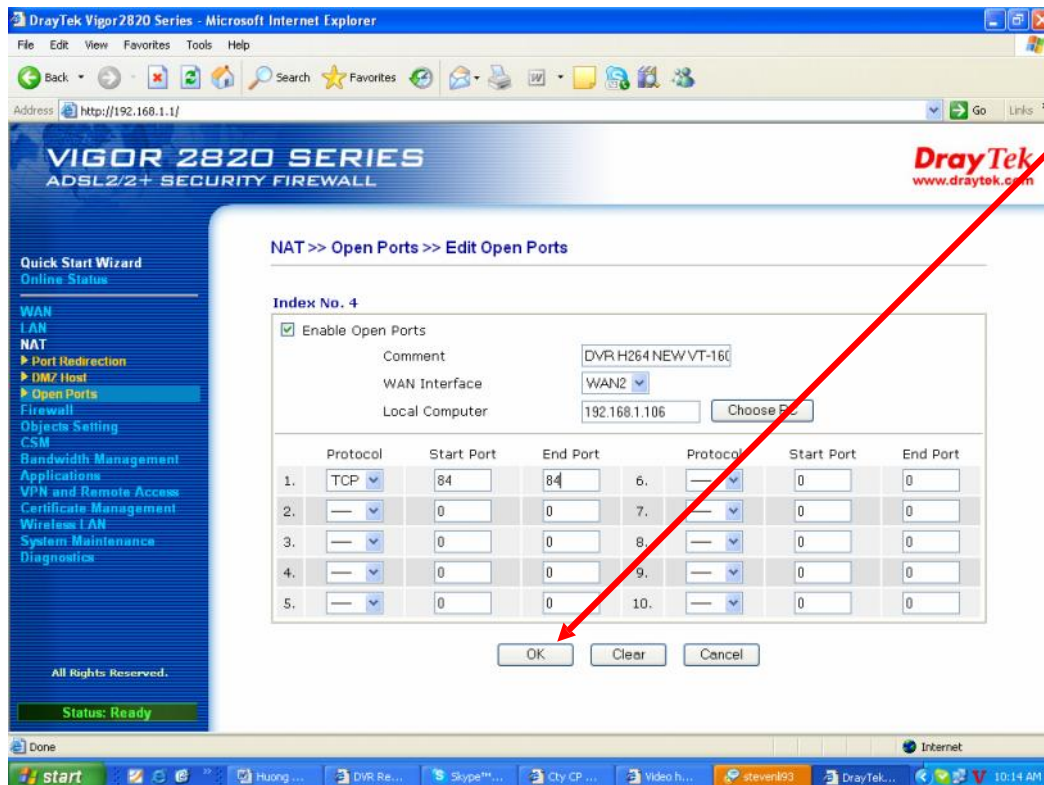
+ M IE (Internet Explore), gõ IP c a Router. VD: 192.168.1.1, User: Admin, Pass: Admin (theo m c nh c a nhà s n xu t c a Router mà b n ang s d ng). Nh n OK



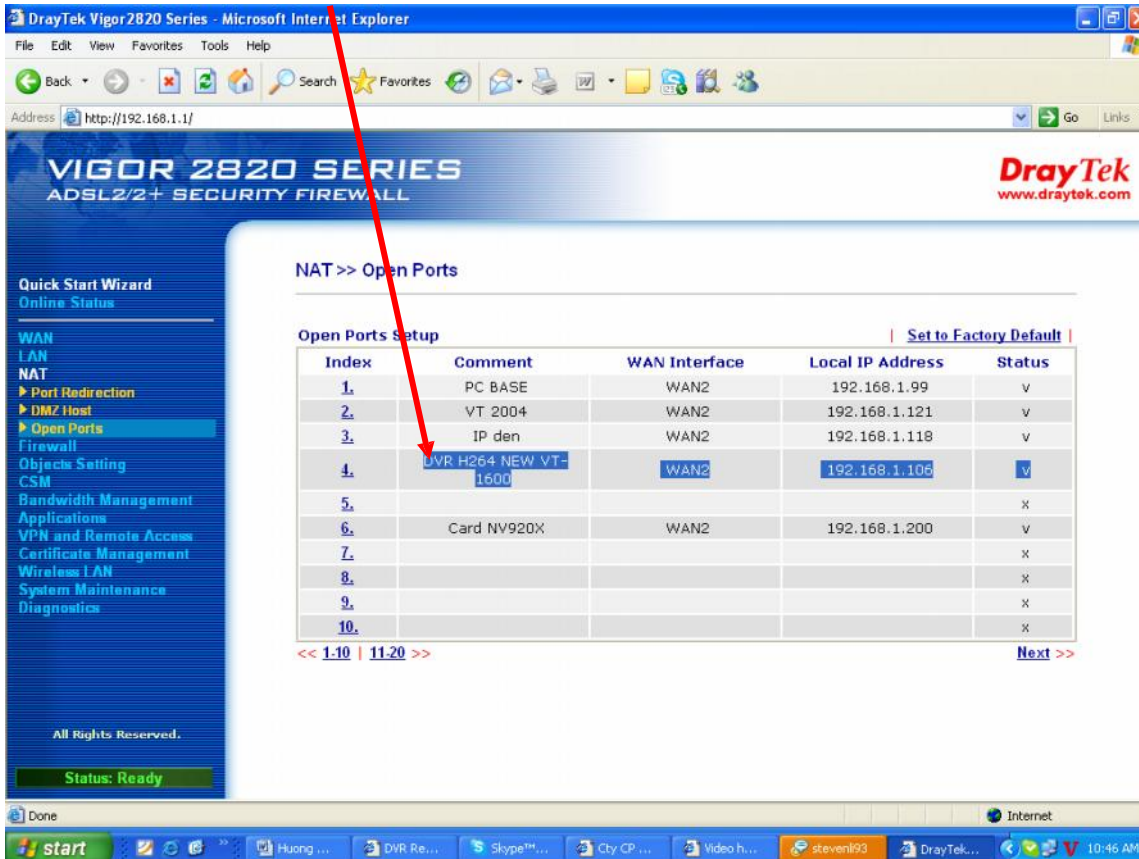
+ Kích ch n NAT, ch n Open Port



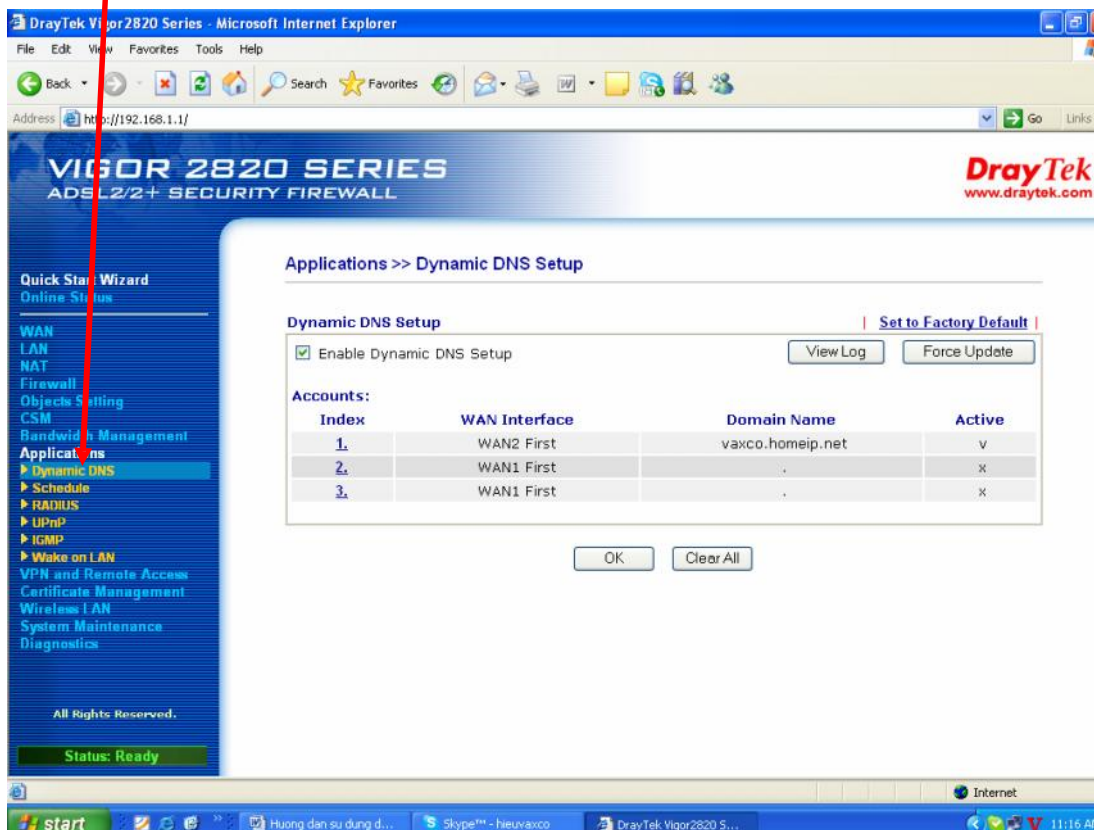
+ ánh u check Enable và i n y thông tin. VD: Comment: DVR H264 NEW VT-1600, Wan Interface: Wan 2, Local Computer: 192.168.1.106, Potocol : TCP, Start Port: 84, End Port: 84. N h n OK
 + L u ý: a ch IP và Port c u hình theo u ghi



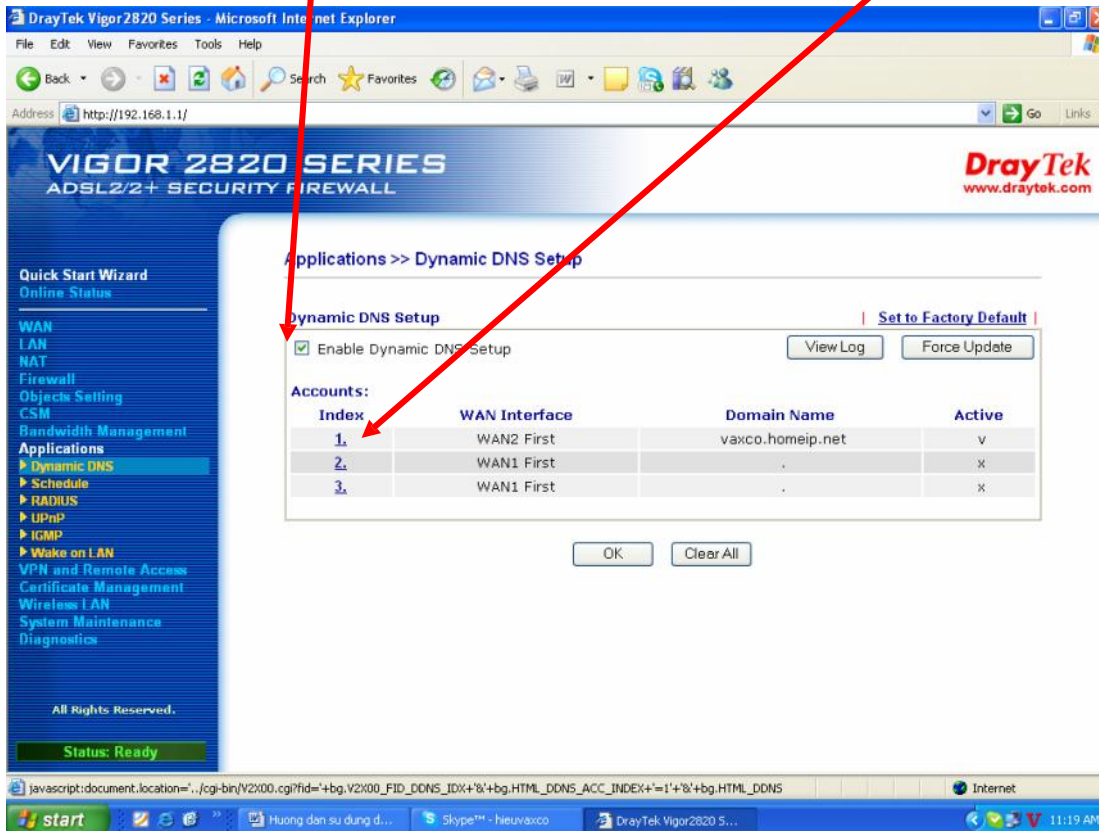
+ m c 4 là ph n m Port c a u ghi, router này cho phép chúng ta m 20 port.



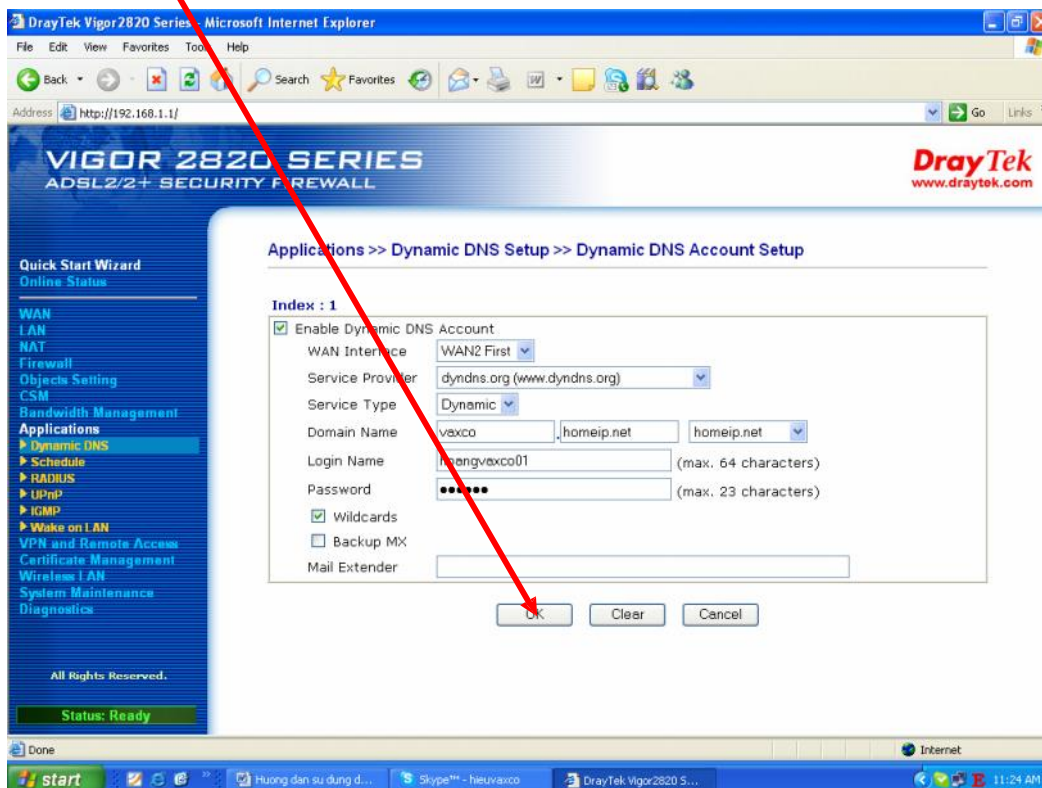
+ Nh n Applications, ch n Dynamic DNS.



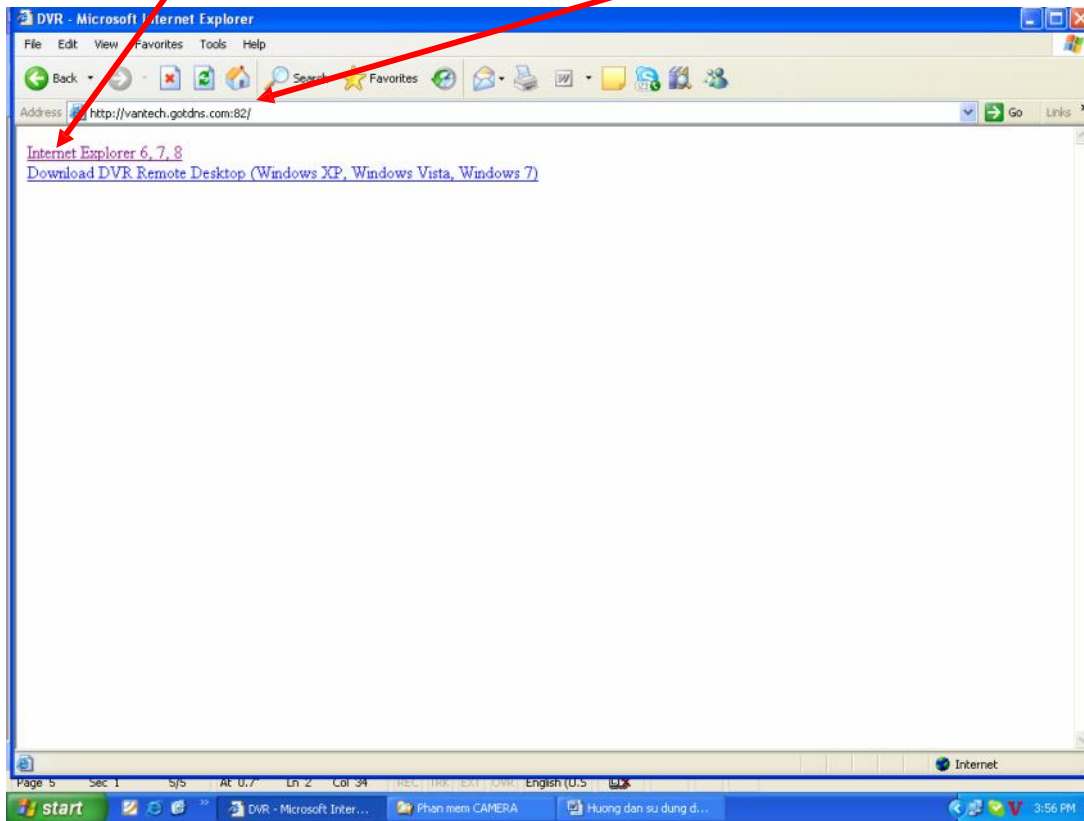
+ ảnh d u check ch n Enable Dynamic DNS Setup, ch n Index: 1.



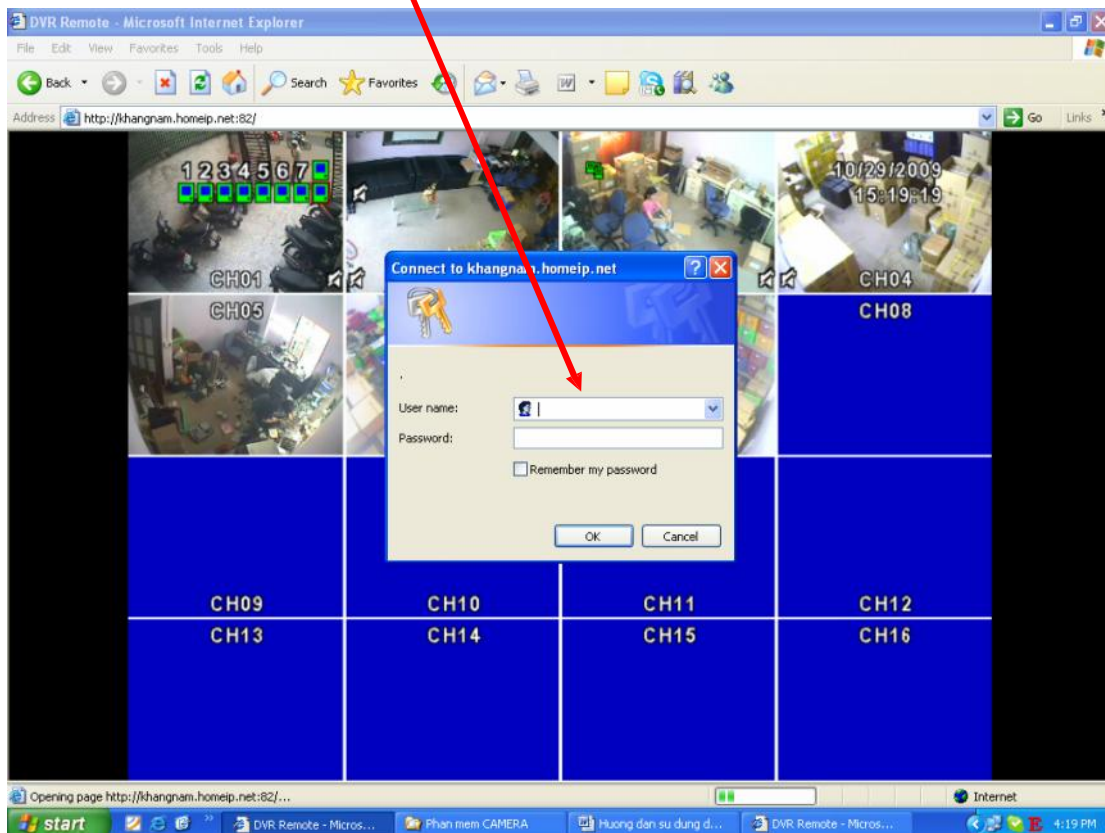
+ i n thông tin y . VD: Wan Interface: Wan2 Fist, Service Provider: dyndns.org (www.dyndns.org), Service Type: Dynamic, Domain Name: demovanxuan.homeip.net, Login Name: xxxx, Password: xxxx, ảnh d u check Wildcards (gõ Host Name tên mi n DNS và tài kho n trong trang DNS ã t o). Nh n OK



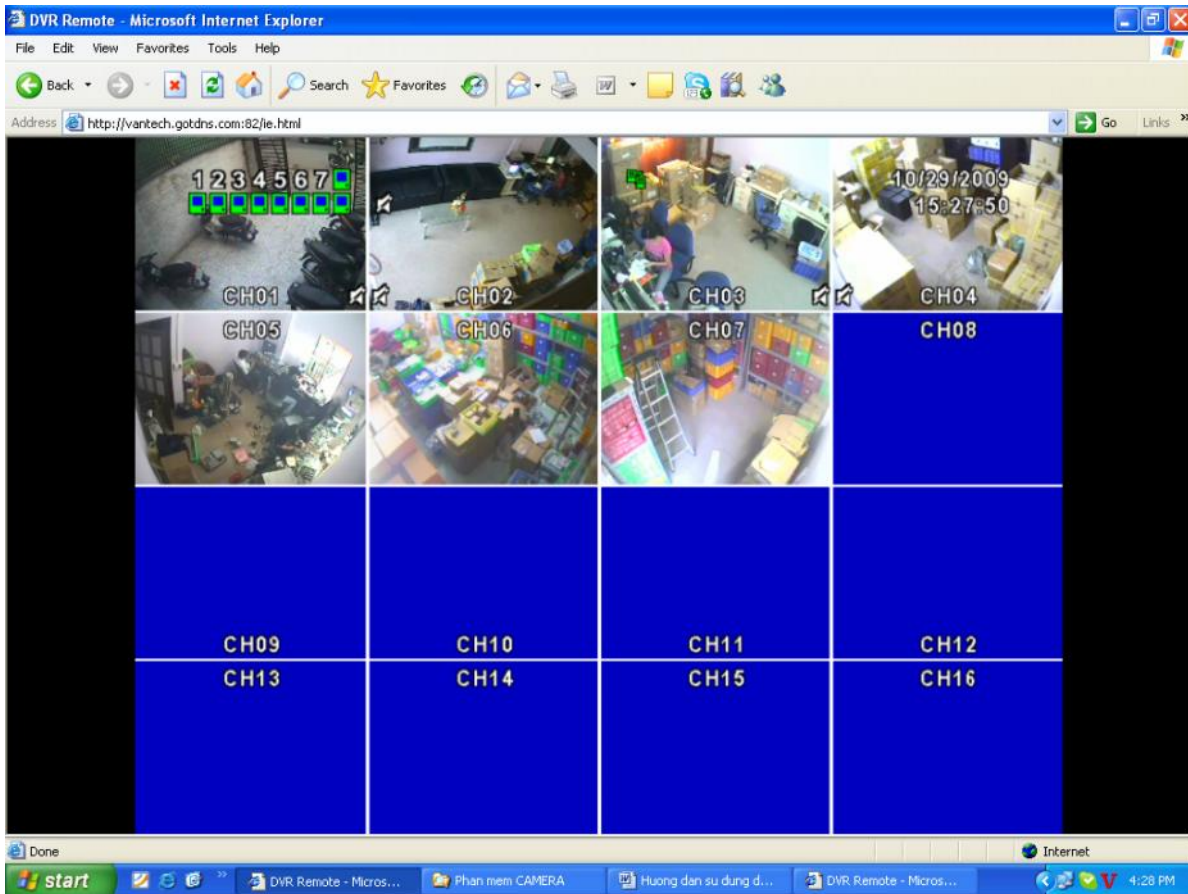
+ M IE (Internet Explorer), gõ Host tên miền DNS. VD: <http://vantech.gotdns.com:82>. Chọn Internet Explorer 6, 7, 8.



+ Nhập User Name: Admin, Pass: 123456 (theo màn hình camera thực tế). Nhấn OK



+ Giao diện chính của màn hình xem qua mạng



+ Nhấn vào chúng ta sẽ có hình xong.



L u ý n g i s d n g:

1. Dựa trên thao tác thực tế, Công Ty này dành cho khách hàng: Hướng dẫn cài đặt và sử dụng ghi hình VT – 4100 – 8100 - 16100. Hy vọng phần HDSD sẽ giúp quý khách trong quá trình cài đặt và thi công lắp đặt.
2. Nếu có vấn đề hay thắc mắc trong quá trình thi công, vui lòng xin liên hệ với Công ty chúng tôi.
3. Công ty chúng tôi mong các sự giúp đỡ của quý khách để hoàn thiện hơn.

***** **H t!** *****